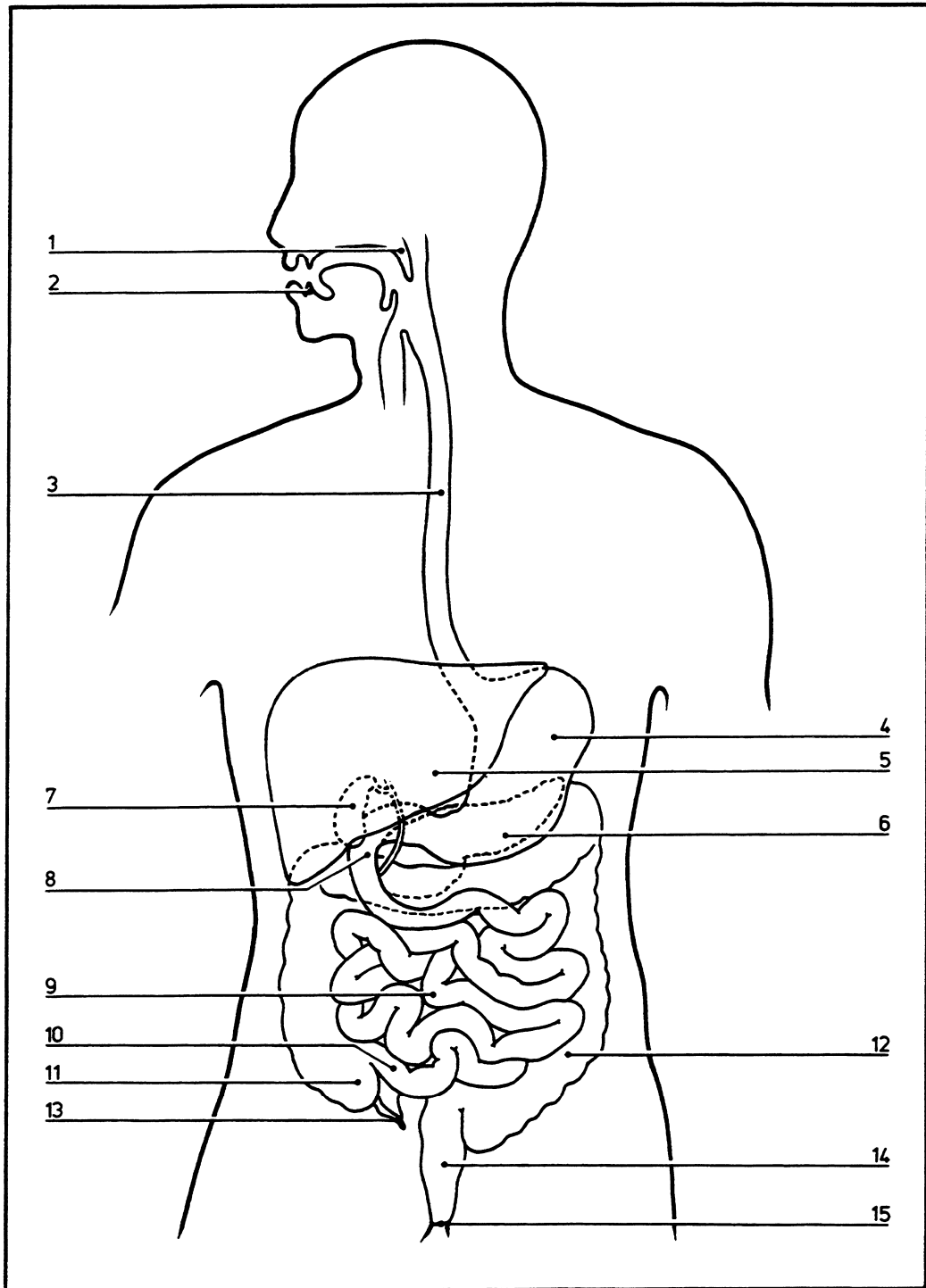


Key diagram

08.001



- | | | | |
|---------------|-----------------|-------|----------|
| Anterior view | 10 | Ileum | |
| 1 | Salivary glands | 11 | Cecum |
| 2 | Teeth | 12 | Colon |
| 3 | Esophagus | 13 | Appendix |
| 4 | Stomach | 14 | Rectum |
| 5 | Liver | 15 | Anus |
| 6 | Pancreas | | |
| 7 | Gallbladder | | |
| 8 | Duodenum | | |
| 9 | Jejunum | | |