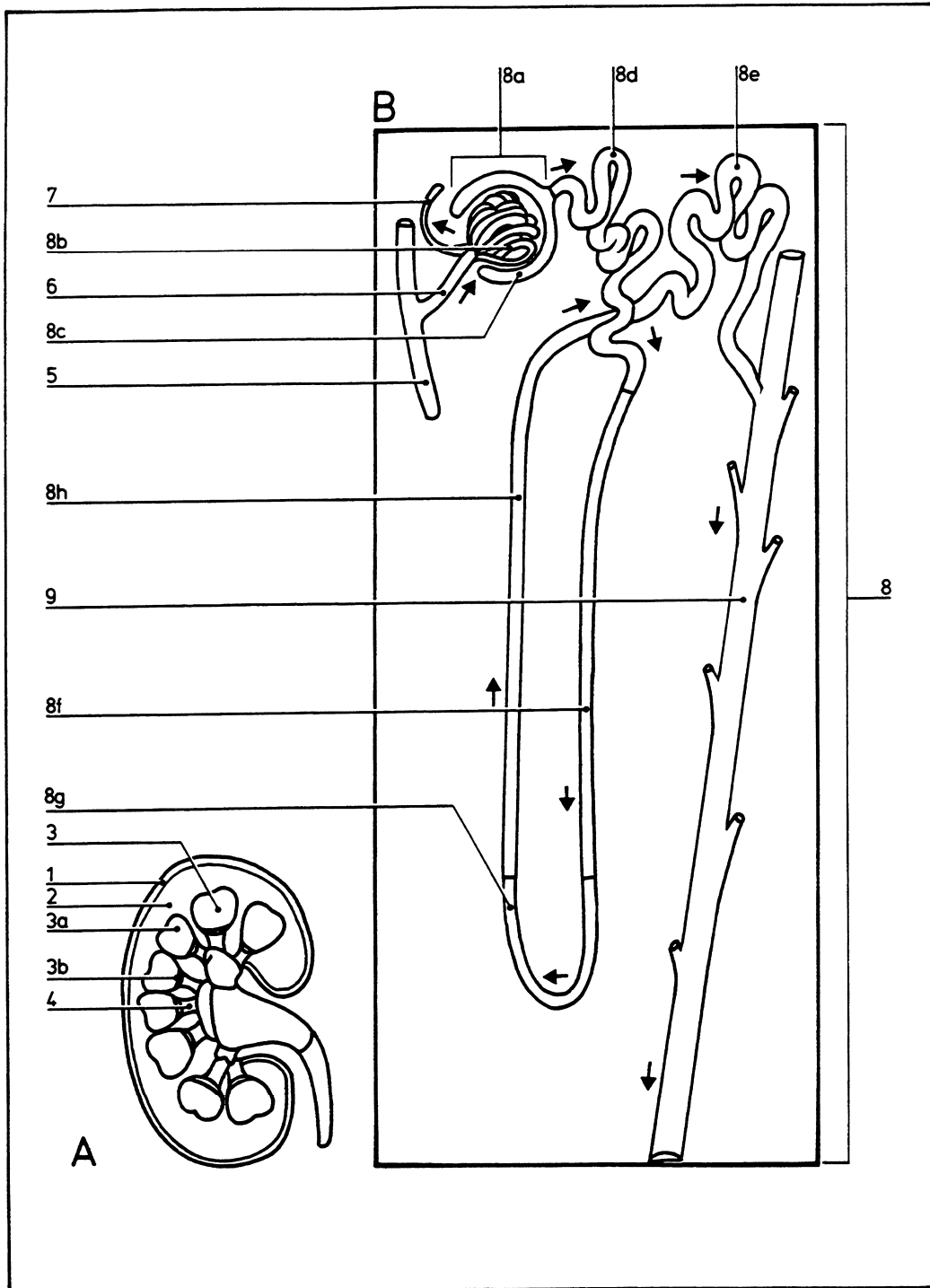


Kidneys: 3

09.007



- | | | | | | |
|-----------|---------------------------------------|-----------|----------------------------|-----------|-----------------|
| A | Longitudinal section through a kidney | 6 | Afferent arteriole | 8g | Loop of Henle |
| | | 7 | Efferent arteriole | 8h | Distal tubule |
| B | Anatomy of a nephron | 8 | Nephron | 9 | Collecting duct |
| | | 8a | Renal corpuscle | | |
| 1 | Renal capsule | 8b | Glomerulus | | |
| 2 | Cortex | 8c | Bowman's capsule | | |
| 3 | Medulla | 8d | Proximal convoluted tubule | | |
| 3a | Pyramid | 8e | Distal convoluted tubule | | |
| 3b | Papilla | 8f | Pars recta | | |
| 4 | Calyx | | | | |
| 5 | Interlobular artery | | | | |