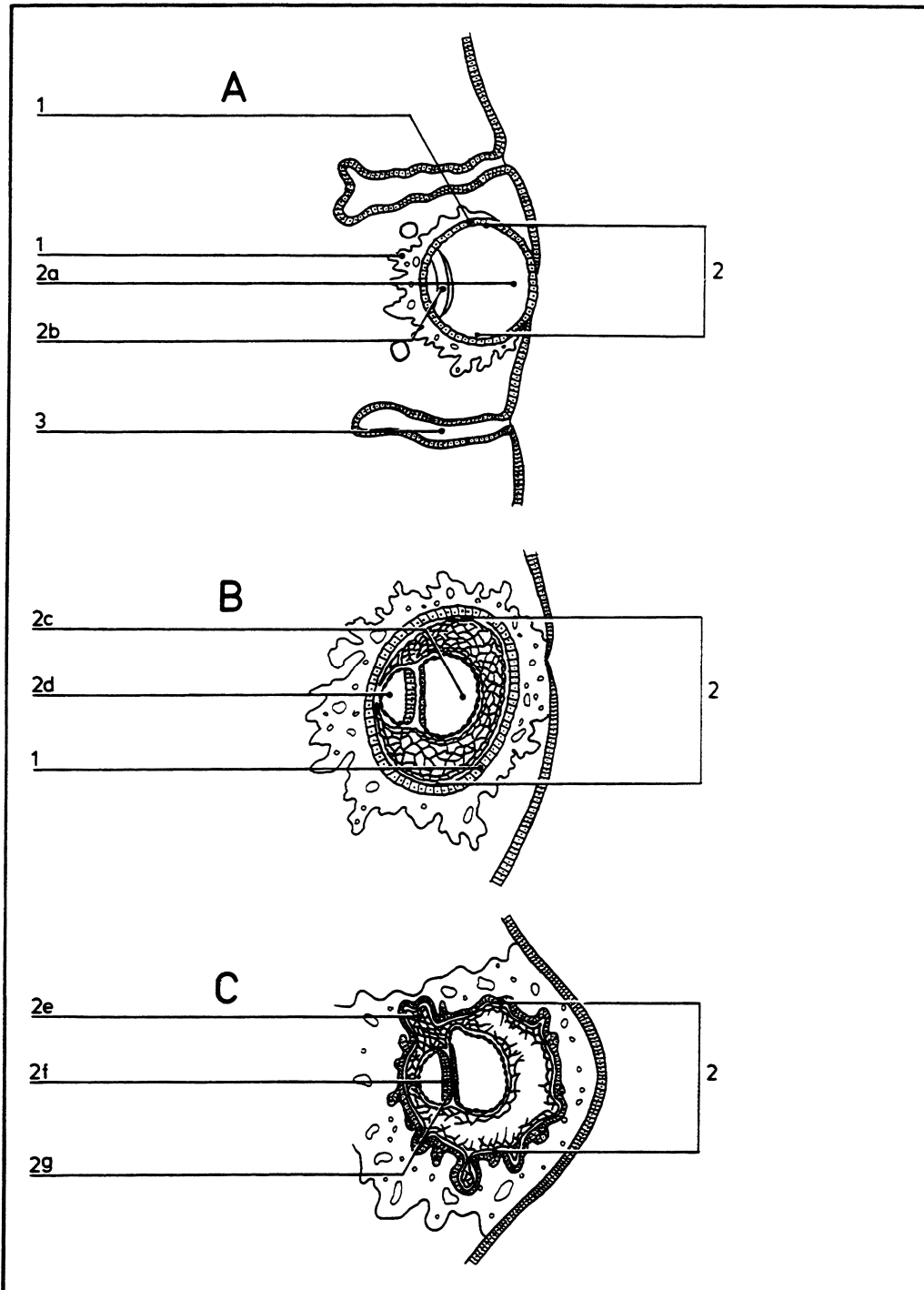


Development: 2

10.019



© DIAGRAM

- | | | | |
|-----------|--|-----------|-----------------------------------|
| A | Early implantation of blastocyst | 2b | Inner cell mass (formative mass) |
| B | Differentiation of cells within embryoblast | 2c | Primary yolk sac |
| C | Further differentiation and beginnings of placenta | 2d | Amniotic cavity |
| 1 | Trophoblast | 2e | Connecting stalk |
| 2 | Embryoblast | 2f | Ectoderm |
| 2a | Blastocyst cavity | 2g | Endoderm |
| | | 3 | Endometrial gland (uterine gland) |