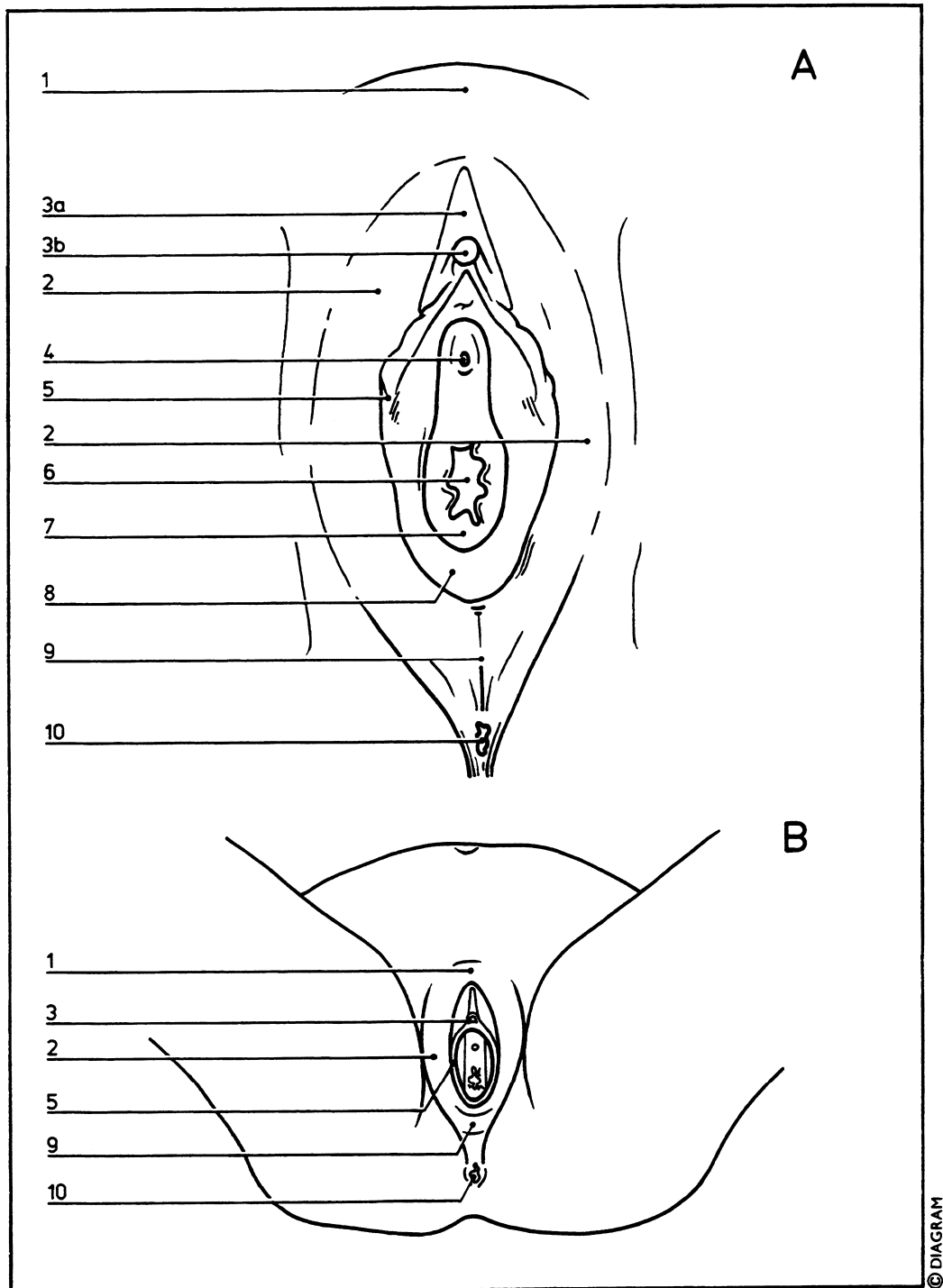


Female: external genitalia

10.009



- | | | | |
|-----------|-----------------------------------|-----------|-----------------|
| A | External female genitalia (vulva) | 5 | Labia minora |
| B | Relative position of vulva | 6 | Vaginal orifice |
| 1 | Mons pubis | 7 | Hymen |
| 2 | Labia majora | 8 | Frenulum |
| 3 | Clitoris | 9 | Perineum |
| 3a | Prepuce | 10 | Anus |
| 3b | Glans | | |
| 4 | Urethral orifice | | |