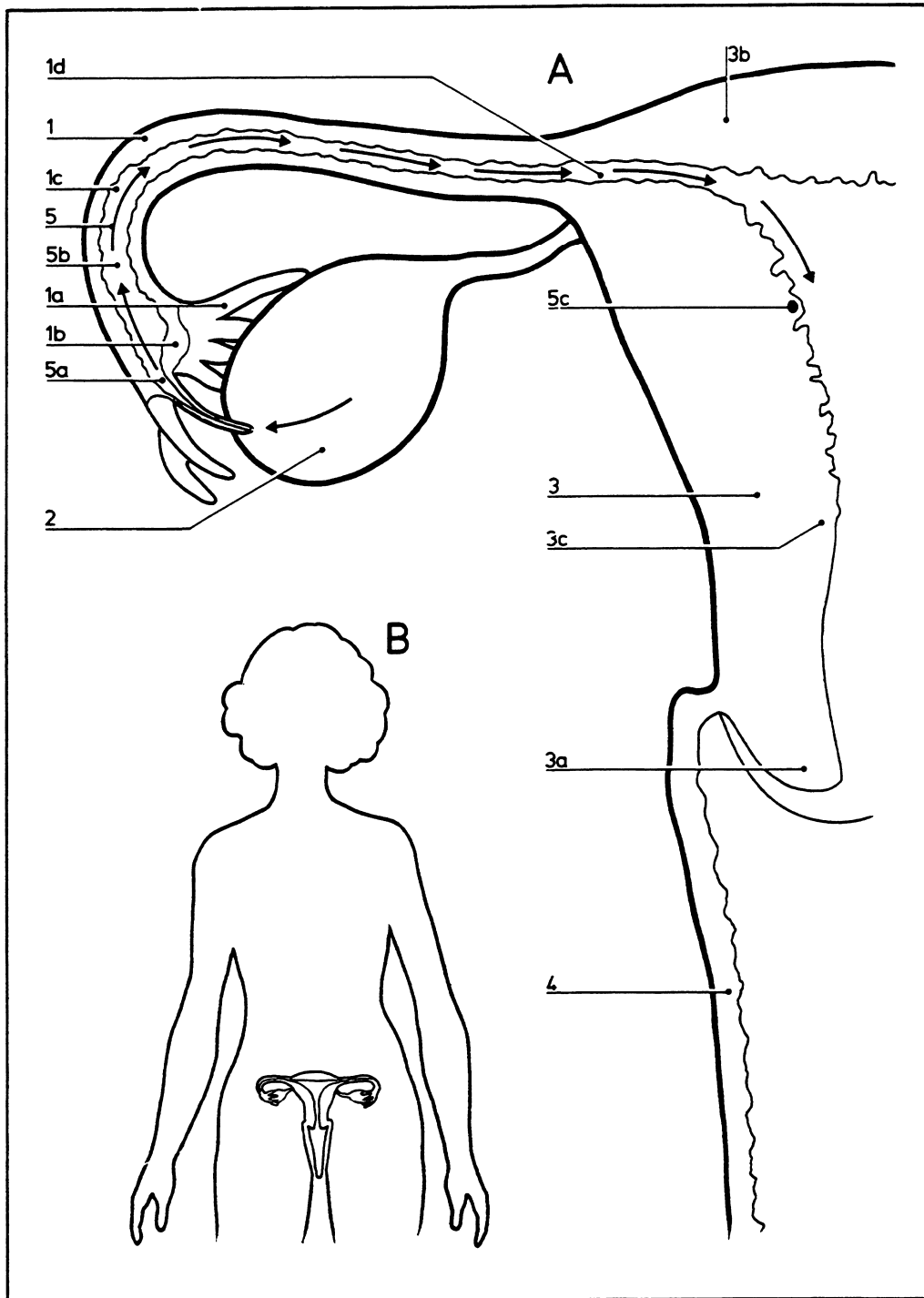


# Female: fertilization

10.011



©DIAGRAM

- |           |  |           |                              |
|-----------|--|-----------|------------------------------|
| <b>A</b>  | Route of ovum from ovary to uterus     | <b>3</b>  | Uterus                       |
| <b>B</b>  | Relative positions of abdominal organs | <b>3a</b> | Cervix                       |
| <b>1</b>  | Fallopian tube                         | <b>3b</b> | Fundus                       |
| <b>1a</b> | Fimbriae                               | <b>3c</b> | Isthmus                      |
| <b>1b</b> | Funnel                                 | <b>4</b>  | Vagina                       |
| <b>1c</b> | Ampulla                                | <b>5</b>  | Route of ovum                |
| <b>1d</b> | Isthmus                                | <b>5a</b> | Unfertilized ovum            |
| <b>2</b>  | Ovary                                  | <b>5b</b> | Fertilized ovum              |
|           |  | <b>5c</b> | Fertilized ovum (blastocyst) |