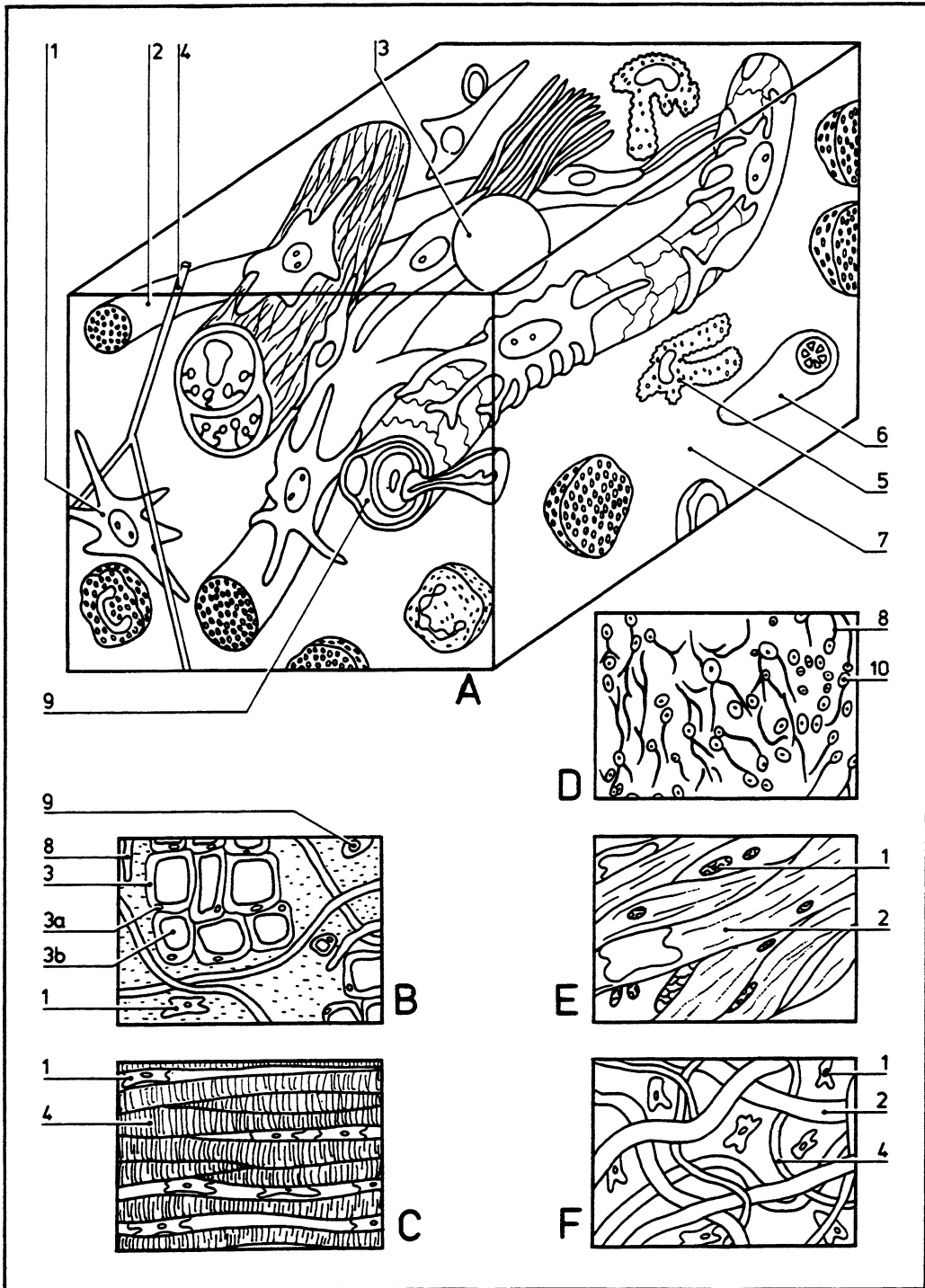


Connective tissue

02.005



- | | |
|---------------------------------|---------------------------|
| A Loose (areolar) tissue | 3b Lipid droplet |
| B Adipose tissue | 4 Elastin fibers |
| C Fibrous tissue | 5 Macrophage |
| D Reticular tissue | 6 Plasma cell |
| E Dense regular tissue | 7 Ground substance |
| F Dense irregular tissue | 8 Reticular fibers |
| 1 Fibroblasts | 9 Capillaries |
| 2 Collagen fibers | 10 Cells of organ |
| 3 Adipose cells | |
| 3a Nucleus | |

©DIAGRAM