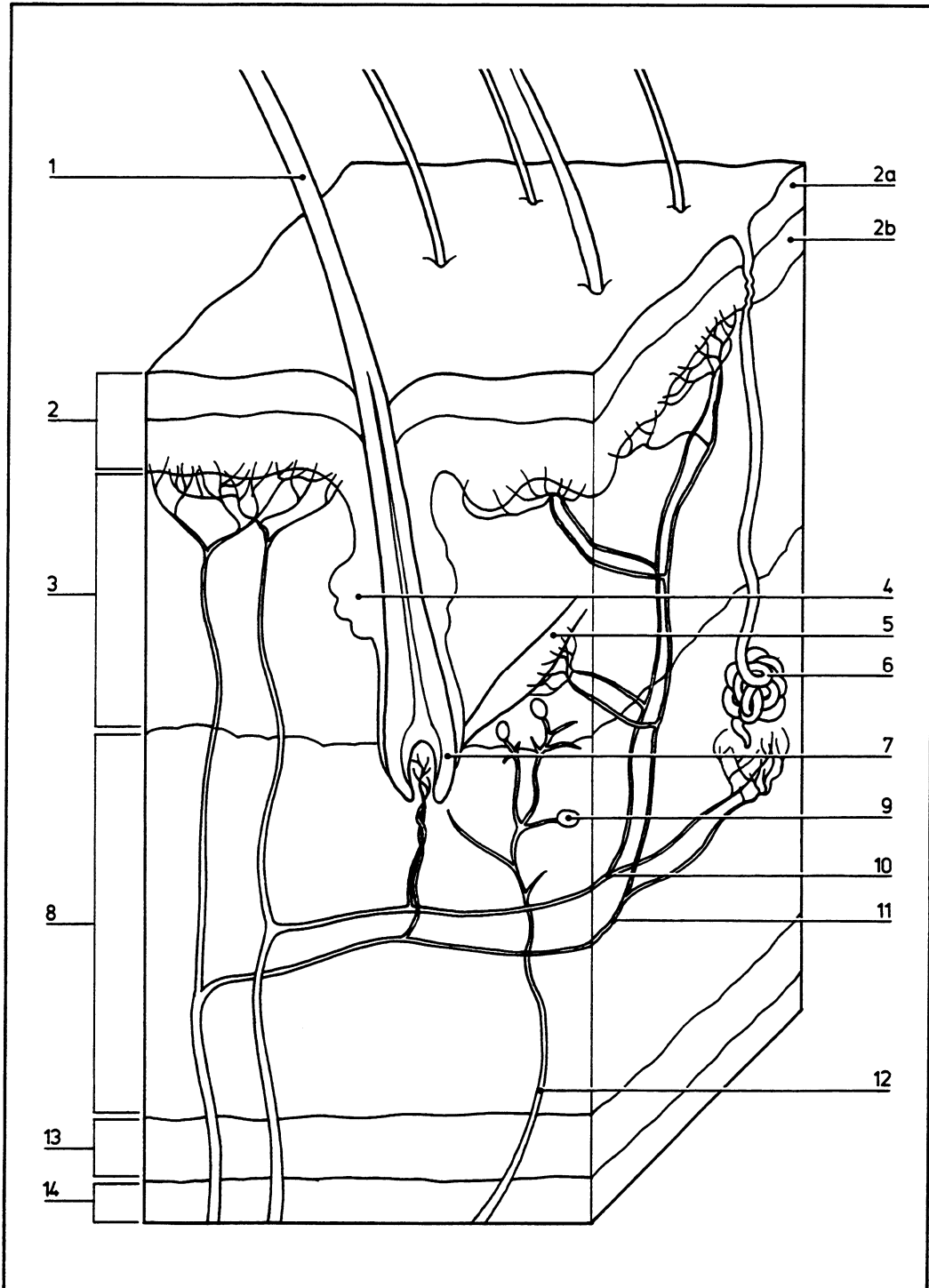


Skin

11.001



© DIAGRAM

Section through hairy skin

- 1 Hair shaft
- 2 Epidermis
- 2a Layers of keratinization
- 2b Germinative layers
- 3 Corium (dermis)
- 4 Sebaceous gland
- 5 Arrector pili

- 6 Sweat gland
- 7 Hair bulb
- 8 Subcutis (subcutaneous tissue)
- 9 Bulbous nerve ending
- 10 Branch of vein
- 11 Branch of artery
- 12 Cutaneous nerve

- 13 Deep fascia
- 14 Muscle layer