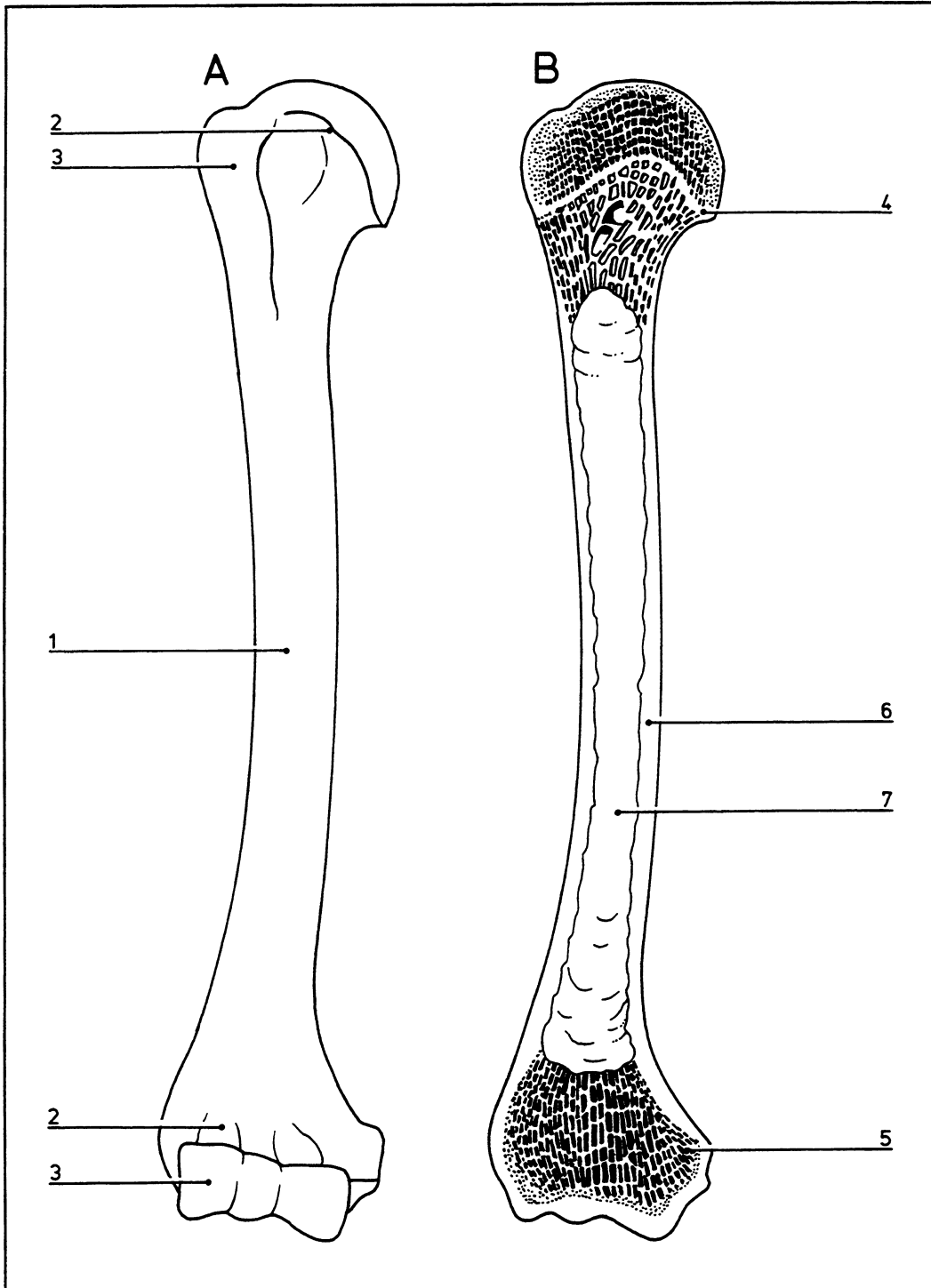


Bone: structure

05.002



- A** Long bone (the humerus)
B Section through a long bone
- 1 Shaft (diaphysis)
2 End (epiphysis)
3 Articular cartilage
4 Epiphyseal line
5 Cancellous (spongy) bone, containing red marrow
6 Compact bone
7 Medullary cavity containing yellow marrow