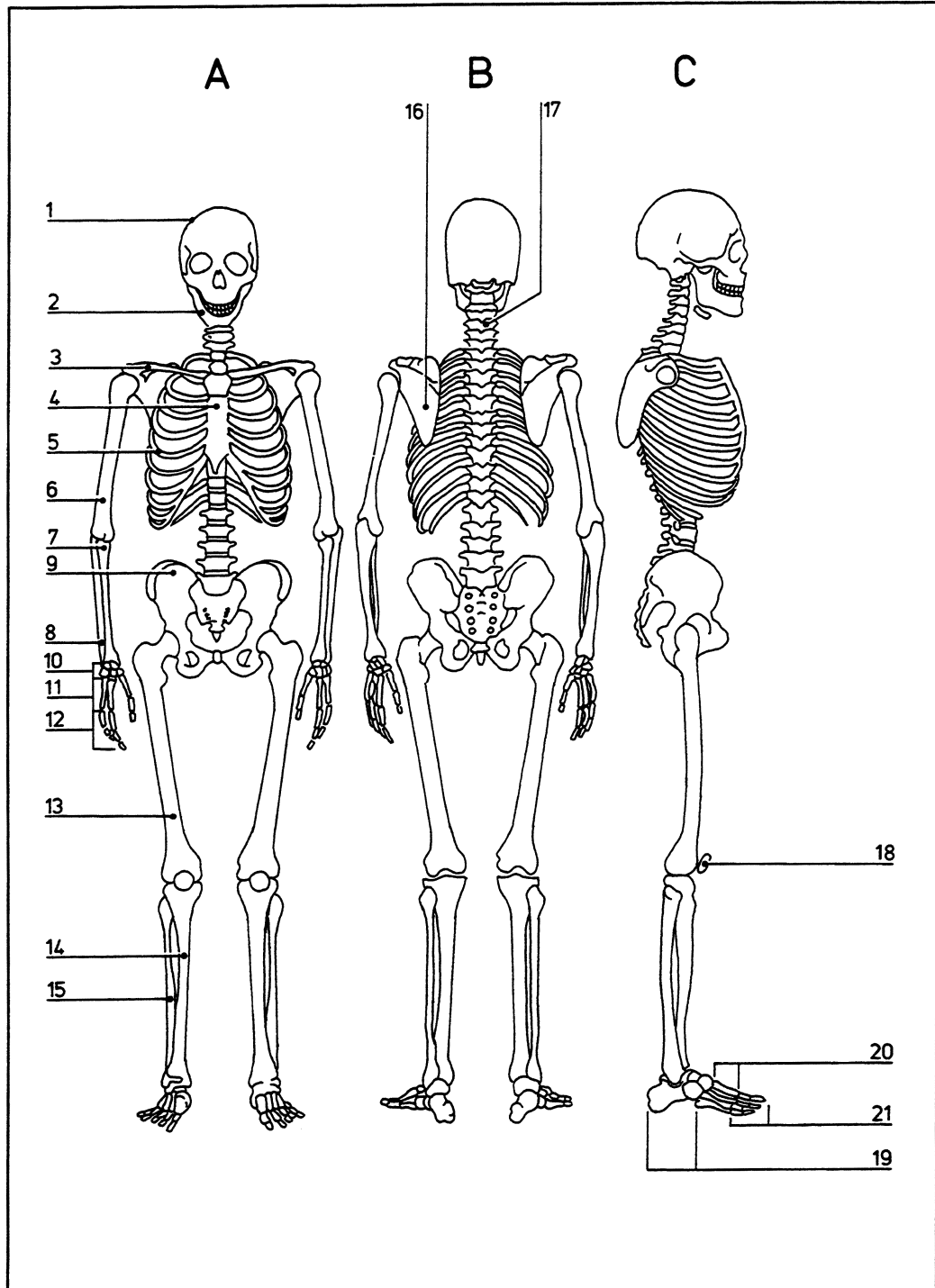


Key diagram

05.001



- | | | |
|-------------------------|----------------------------|----------------------|
| A Anterior view | 8 Ulna | 19 Tarsus |
| B Posterior view | 9 Pelvic girdle | 20 Metatarsus |
| C Lateral view | 10 Carpus | 21 Phalanges |
| 1 Cranium | 11 Metacarpus | |
| 2 Mandible | 12 Phalanges | |
| 3 Clavicle | 13 Femur | |
| 4 Sternum | 14 Tibia | |
| 5 Ribs | 15 Fibula | |
| 6 Humerus | 16 Scapula | |
| 7 Radius | 17 Spinal vertebrae | |
| | 18 Patella | |