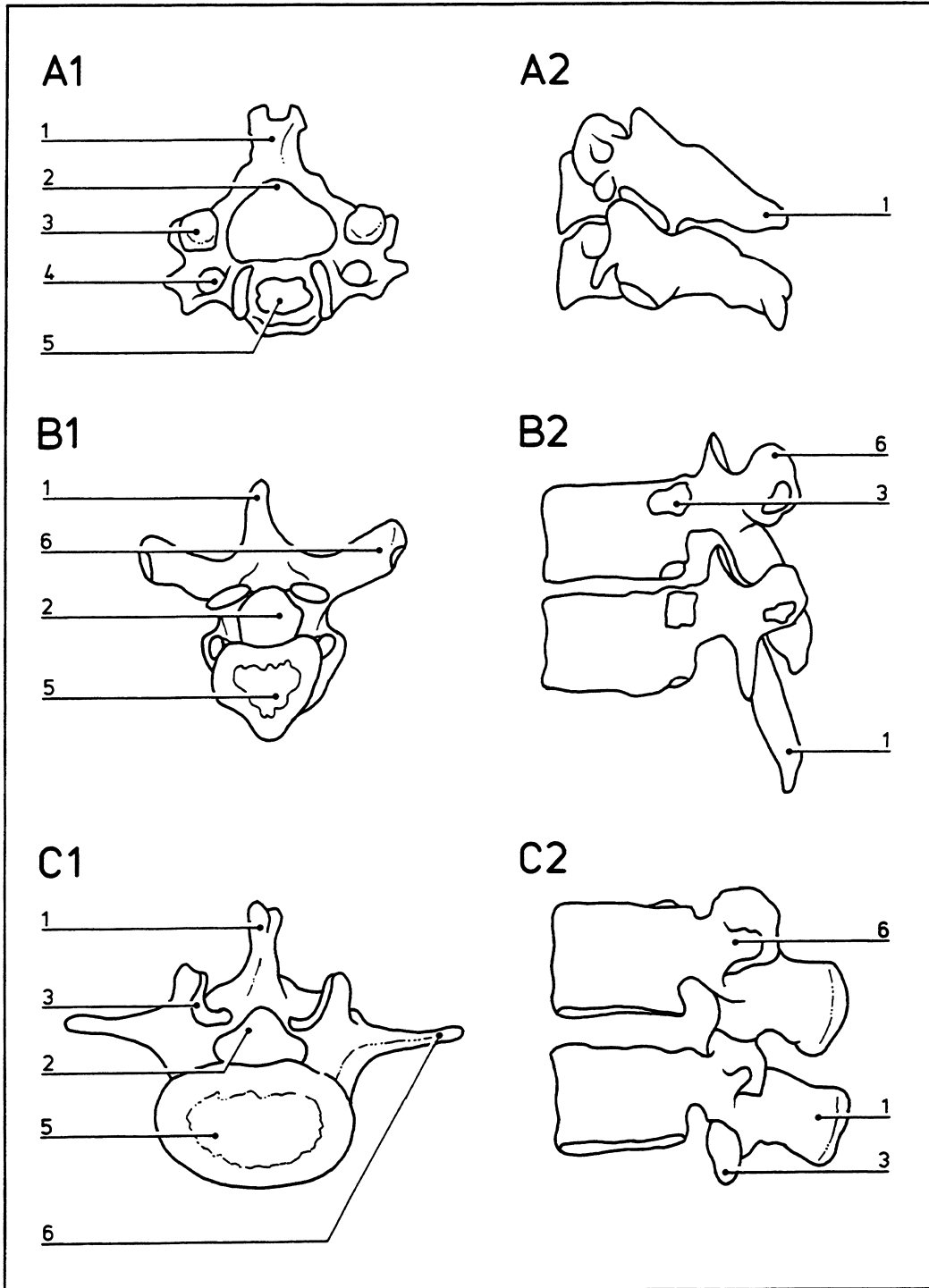


# Vertebrae

05.014



- |  |   |
|--|---|
| <b>A1</b> Cervical vertebrae – superior view | <b>C2</b> Lumbar vertebrae – lateral view |
| <b>A2</b> Cervical vertebrae – lateral view  | <b>1</b> Spinous process                  |
| <b>B1</b> Thoracic vertebrae – superior view | <b>2</b> Vertebral foramen                |
| <b>B2</b> Thoracic vertebrae – lateral view  | <b>3</b> Articular facet                  |
| <b>C1</b> Lumbar vertebrae – superior view   | <b>4</b> Transverse foramen               |
|  | <b>5</b> Vertebral body                   |
|  | <b>6</b> Transverse process               |