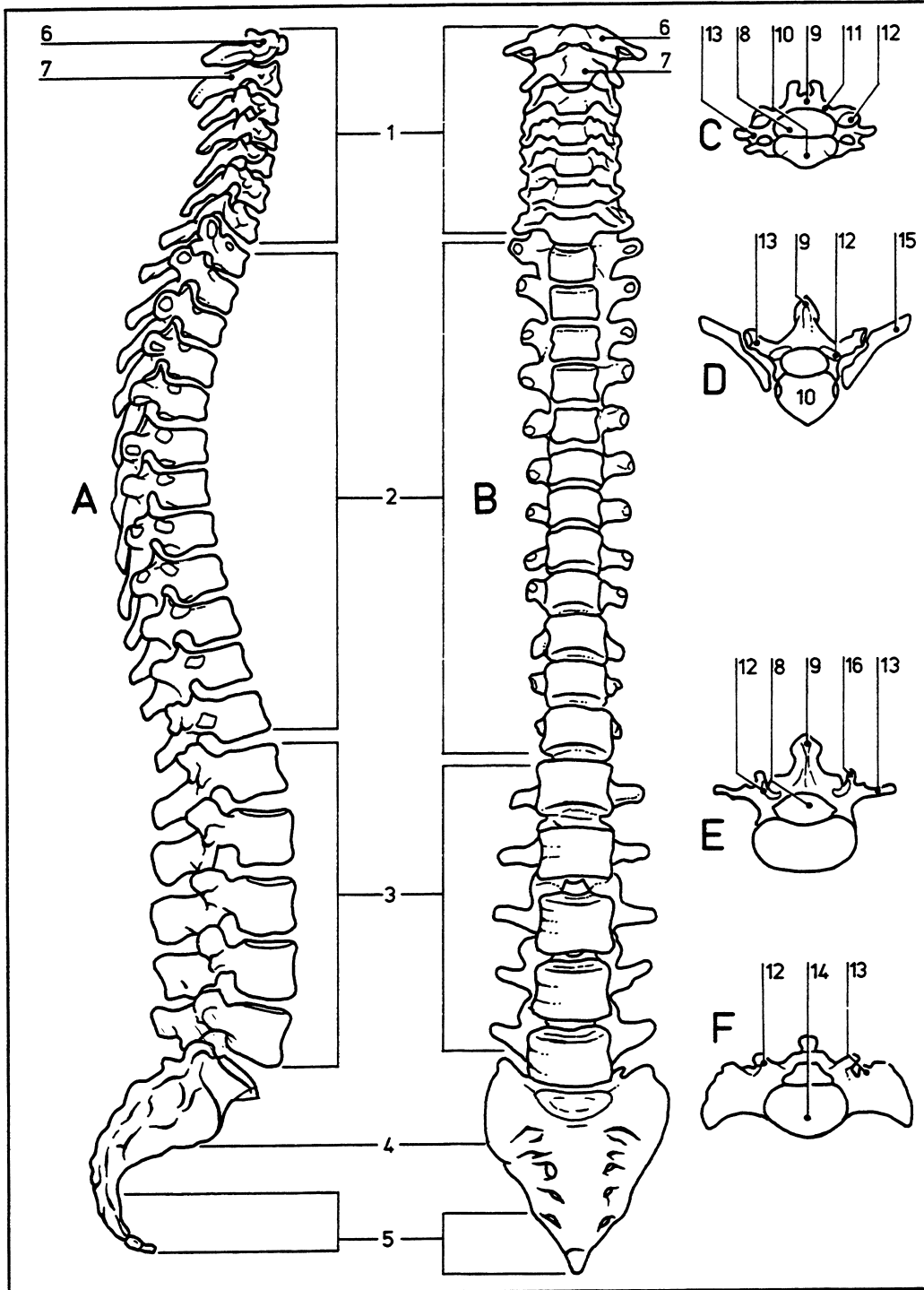


Vertebral column

05.013



© DIAGRAM

- | | | |
|-------------------------------------|----------------------------------|------------------------------|
| A Lateral view | 3 Lumbar vertebrae (L1-5) | 13 Transverse process |
| B Posterior view | 4 Sacrum (5 pieces) | 14 Base of sacrum |
| C Cervical vertebra | 5 Coccyx (3-4 pieces) | 15 Attached rib |
| D Thoracic vertebra | 6 Atlas | 16 Articular process |
| E Lumbar vertebra | 7 Axis | |
| F Sacrum | 8 Vertebral foramen | |
| 1 Cervical vertebrae (C1-7) | 9 Spinous process | |
| 2 Thoracic vertebrae (T1-12) | 10 Vertebral body | |
| | 11 Lamina | |
| | 12 Articular facet | |