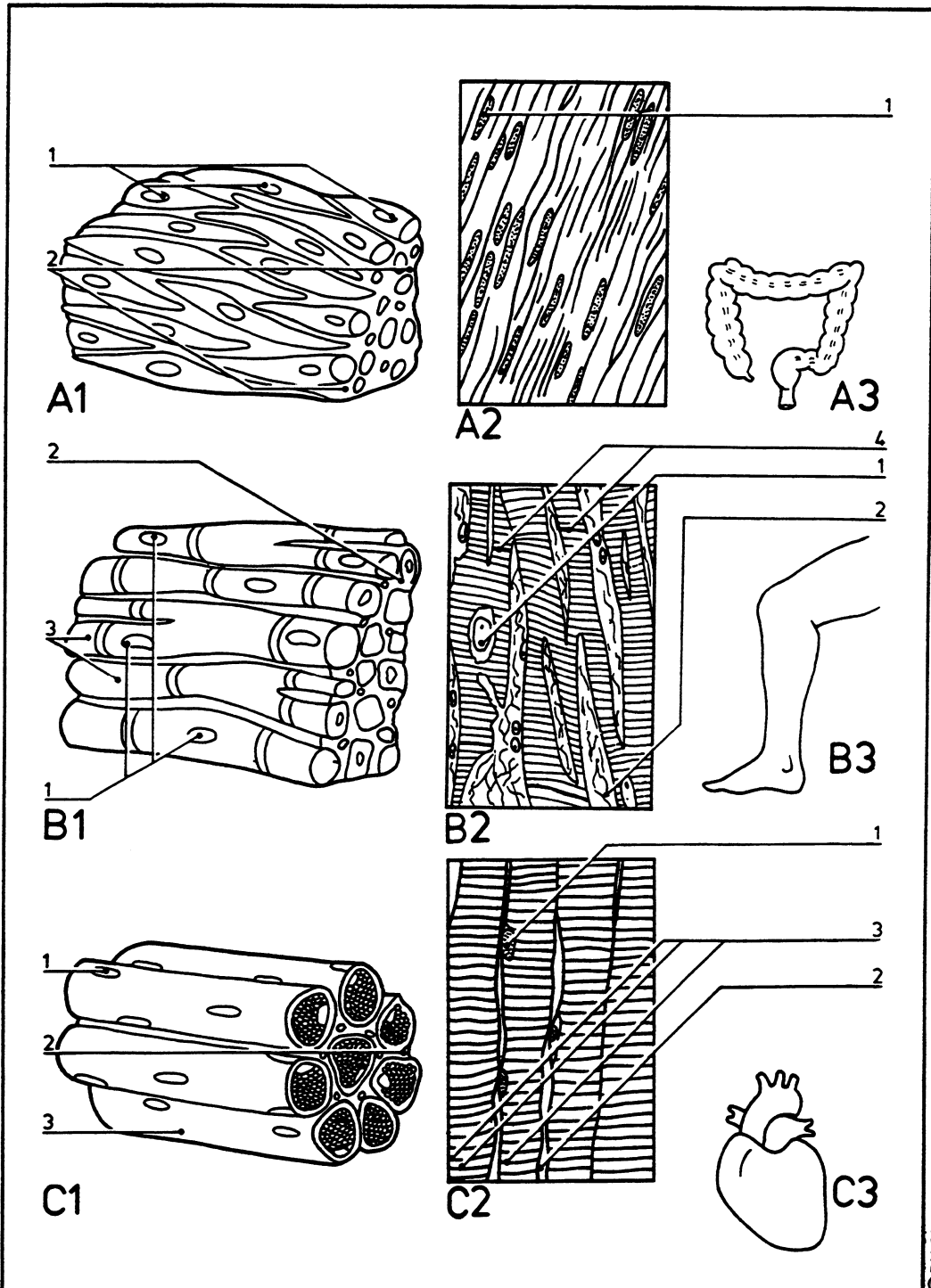


Muscles: types

04.006



- | | |
|--------------------------------------|-----------------------------|
| A1 Smooth (visceral) muscle | C3 Location |
| A2 Longitudinal section | 1 Muscle cell nuclei |
| A3 Typical location | 2 Connective tissue |
| B1 Cardiac muscle | 3 Striations |
| B2 Longitudinal section | 4 Intercalated discs |
| B3 Typical location | |
| C1 Skeletal (striated) muscle | |
| C2 Longitudinal section | |