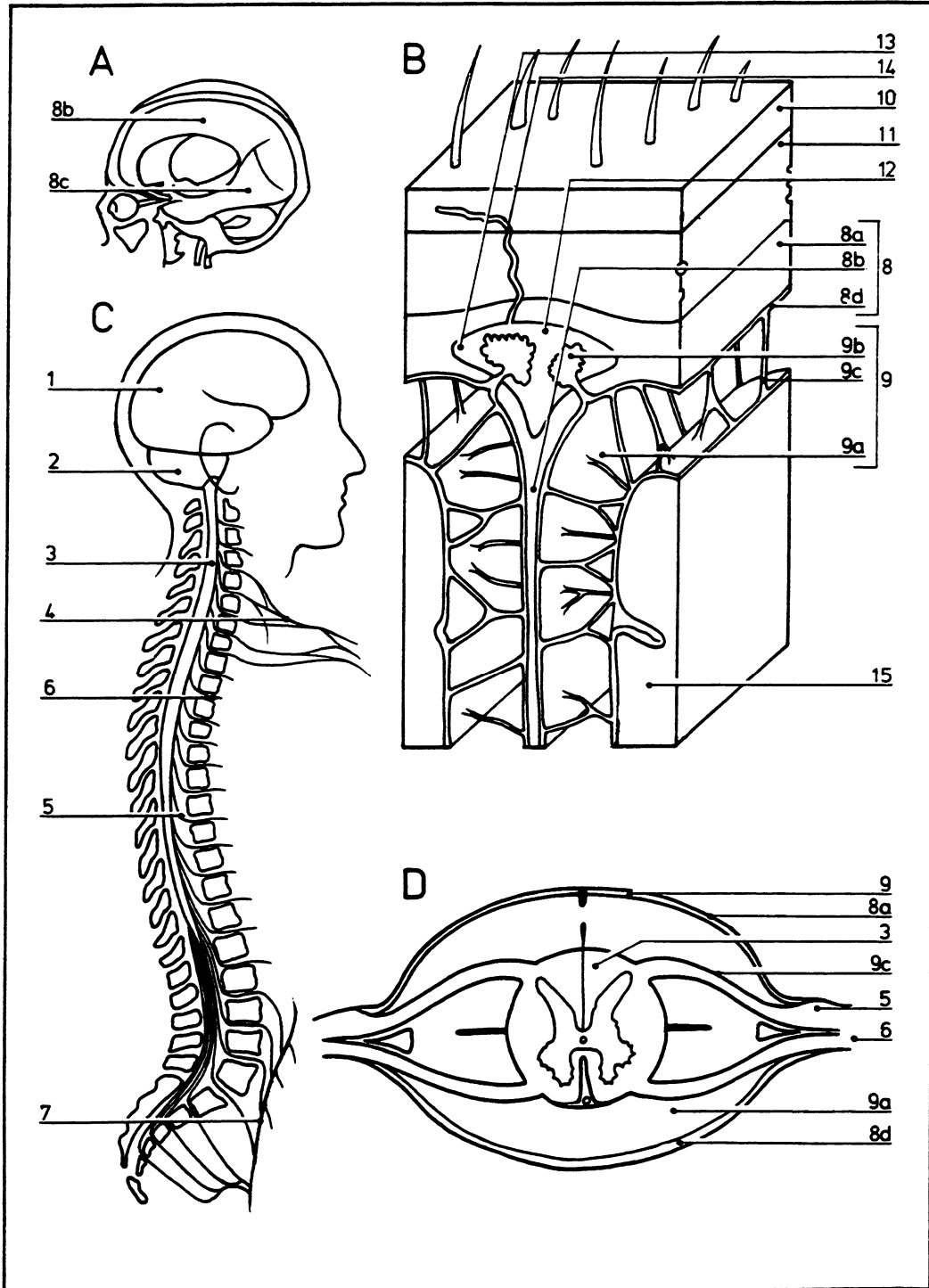


# Brain and spinal cord

03.005



©DIAGRAM

- |   |                               |                                   |                           |
|---|-------------------------------|-----------------------------------|---------------------------|
| <b>A</b> Cross section to show dura mater (outer layer of meninges) | <b>1</b> Brain                | <b>8d</b> Subdural space          | <b>15</b> Cerebral cortex |
| <b>B</b> Meninges and subarachnoid space                            | <b>2</b> Cerebellum           | <b>9</b> Arachnoid                |                           |
| <b>C</b> Position of central nervous system in body                 | <b>3</b> Spinal cord          | <b>9a</b> Subarachnoid space      |                           |
| <b>D</b> Transverse section through spinal cord and its membranes   | <b>4</b> Brachial plexus      | <b>9b</b> Arachnoid granulations  |                           |
|   | <b>5</b> Spinal ganglia       | <b>9c</b> Pia mater               |                           |
|   | <b>6</b> Spinal nerves        | <b>10</b> Scalp                   |                           |
|   | <b>7</b> Lumbosacral plexus   | <b>11</b> Cranium                 |                           |
|   | <b>8</b> Meninges             | <b>12</b> Superior sagittal sinus |                           |
|   | <b>8a</b> Dura mater          | <b>13</b> Venous lacuna           |                           |
|   | <b>8b</b> Falx cerebri        | <b>14</b> Diploic vein            |                           |
|   | <b>8c</b> Tentorium cerebelli |                                   |                           |