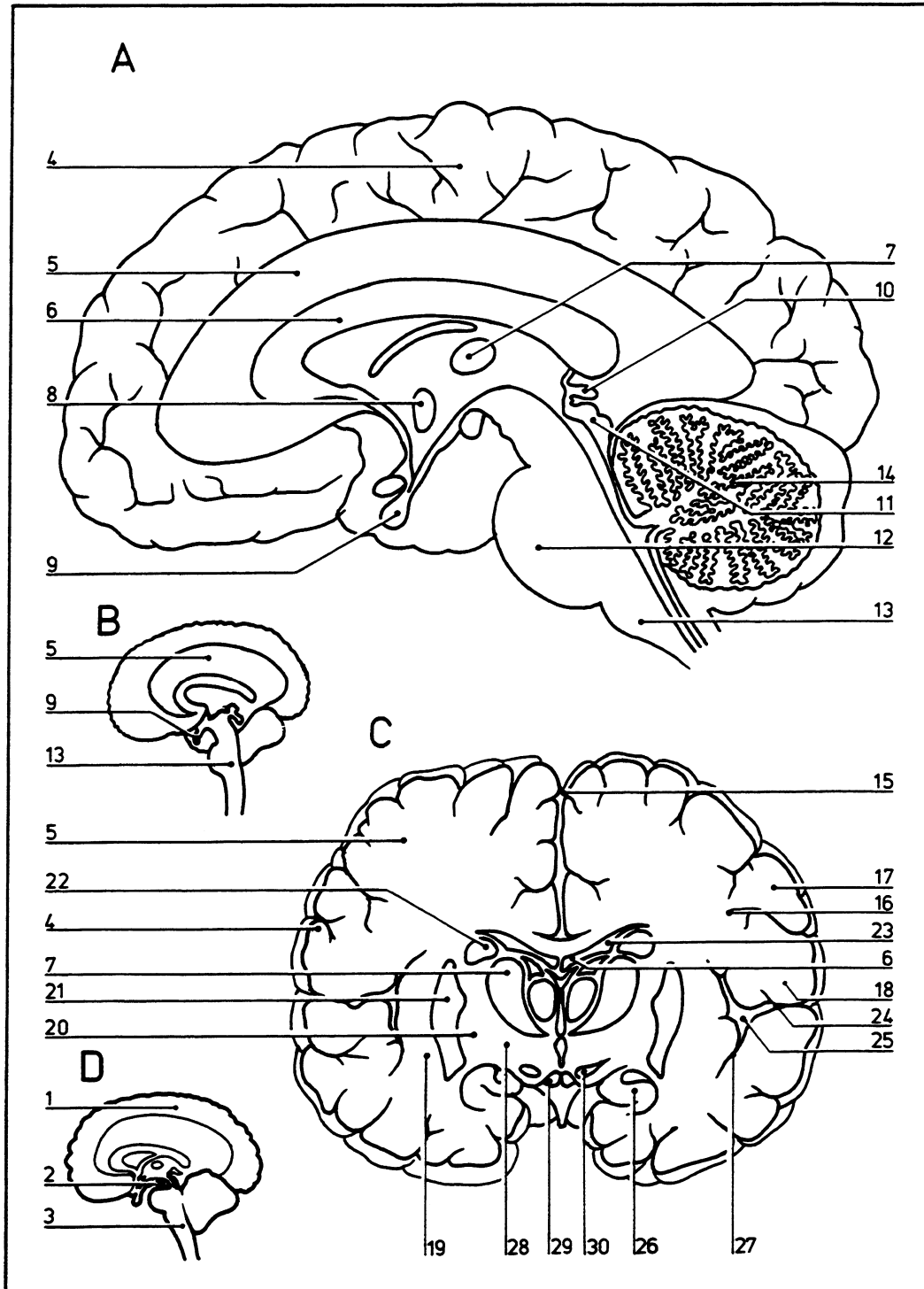


Brain: 4

03.009



© DIAGRAM

- | | | | |
|--|--------------------------|---|---|
| A Cross section through brain | 5 White matter | 15 Longitudinal cerebral fissure | 25 Lateral fossa |
| B Cross section through brain | 6 Corpus callosum | 16 Central sulcus | 26 Hippocampus |
| C Frontal section through brain | 7 Thalamus | 17 Precentral gyrus | 27 Transverse temporal gyri |
| D Cross section through brain | 8 Hypothalamus | 18 Postcentral gyrus | 28 Subthalamic body |
| 1 Forebrain | 9 Pituitary gland | 19 Claustrum | 29 Mammillary bodies |
| 2 Midbrain | 10 Pineal gland | 20 Globus pallidus | 30 Substantia nigra (part of midbrain) |
| 3 Hindbrain | 11 Lamina tecti | 21 Putamen | |
| 4 Cerebral cortex (gray matter) | 12 Pons | 22 Caudate nucleus | |
| | 13 Medulla | 23 Fornix | |
| | 14 Cerebellum | 24 Lateral cerebral sulcus | |