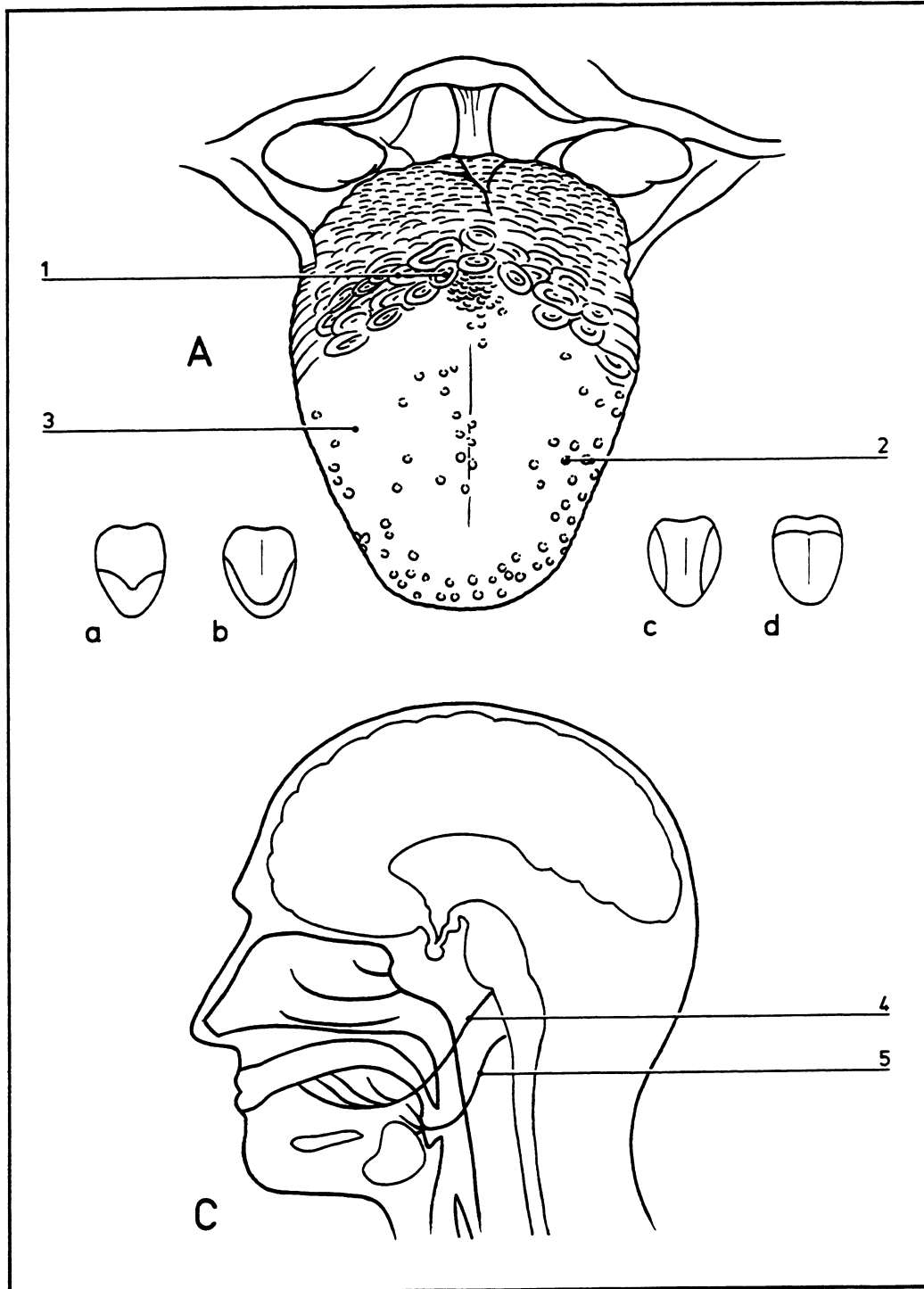


Tongue: 1

11.019



- | | | | |
|----------|---|----------|------------------------|
| A | The tongue | 1 | Vallate papillae |
| B | Location of taste areas | 2 | Fungiform papillae |
| a | Salt | 3 | Filiform papillae |
| b | Sweet | 4 | Facial nerve |
| c | Sour | 5 | Glossopharyngeal nerve |
| d | Bitter | | |
| C | Sagittal section showing nerves conveying taste sensations to the brain | | |