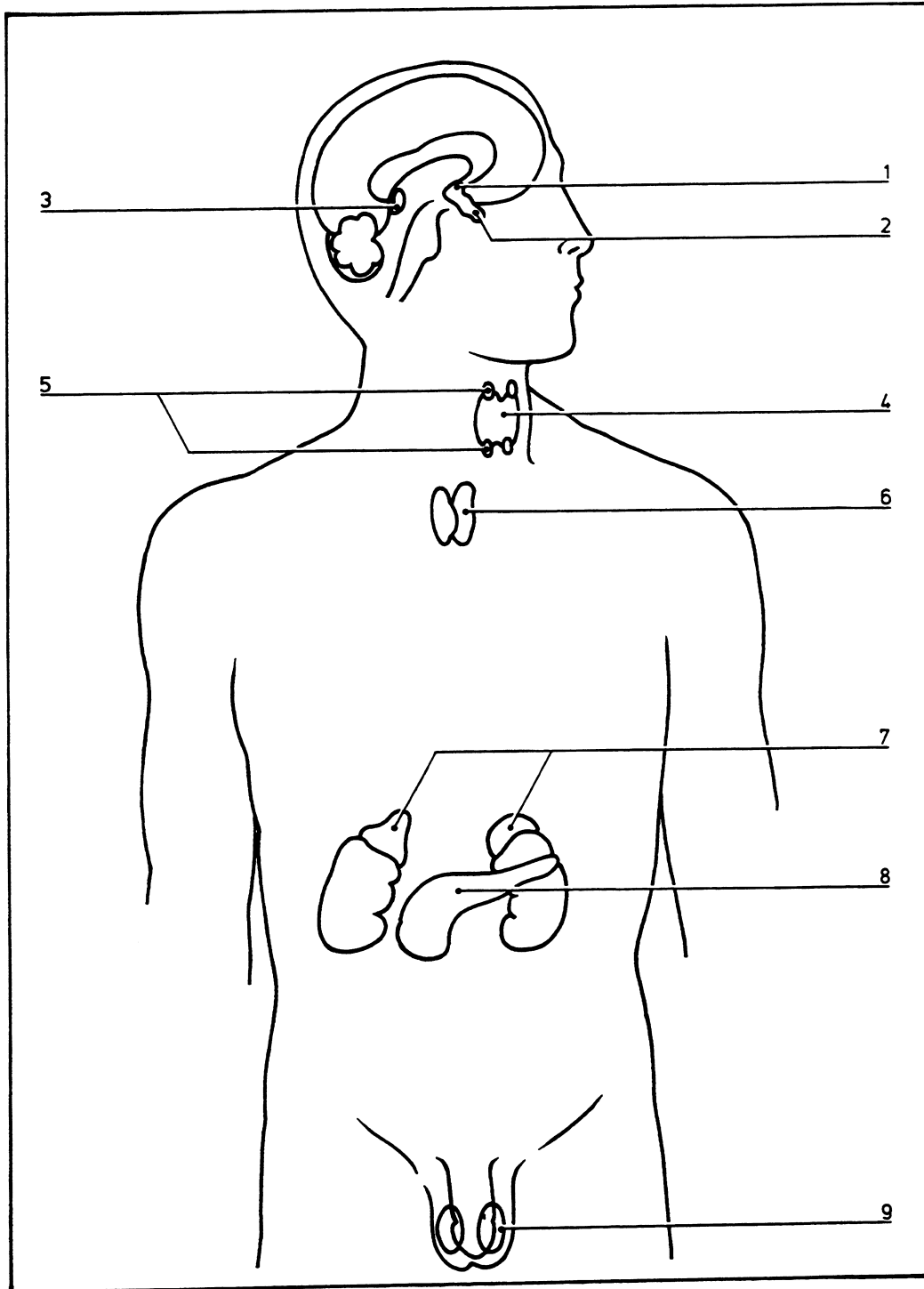


Key diagram: male

12.001



- 1 Hypothalamus
- 2 Pituitary gland (hypophysis)
- 3 Pineal gland (epiphysis)
- 4 Thyroid gland
- 5 Parathyroid glands
- 6 Thymus
- 7 Adrenal (suprarenal) glands
- 8 Pancreas
- 9 Gonads (testes)