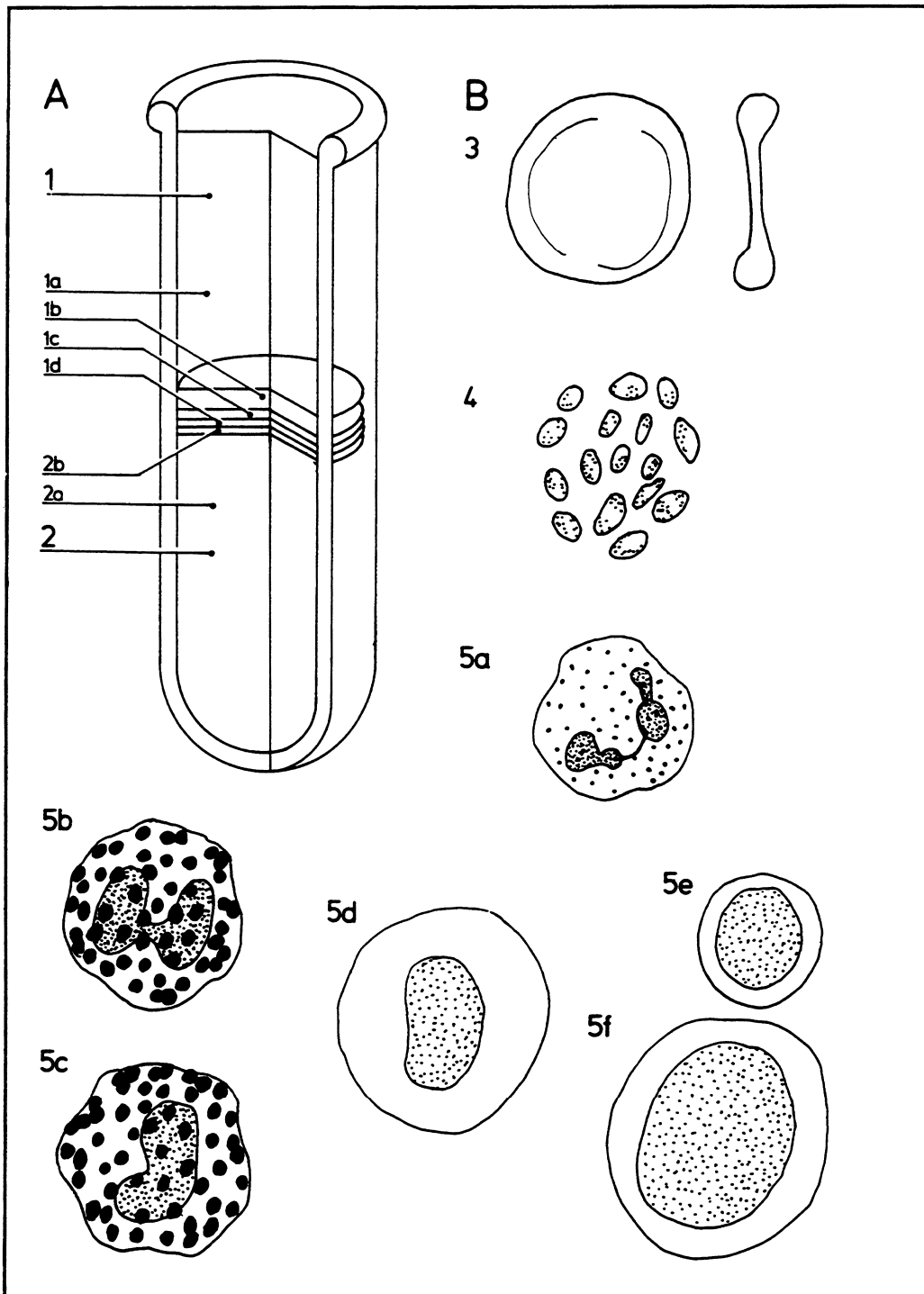


Blood components: 2

06.047



- | | | | | | |
|-----------|--------------------------------------|-----------|---------------------------------------|-----------|--------------------------|
| A | Diagram showing composition of blood | 2 | Blood cells 45% | 5a | Neutrophil (granulocyte) |
| | | 2a | Erythrocytes 44% (97.8% 97.7%) | 5b | Eosinophil (granulocyte) |
| B | Blood components | 2b | Leukocytes & platelets 1% (2.2% 2.3%) | 5c | Basophil (granulocyte) |
| 1 | Plasma 50% | 3 | Erythrocytes (red blood corpuscles) | 5d | Monocyte |
| 1a | Water 90% (45%) | 4 | Thrombocytes (platelets) | 5e | Small lymphocyte |
| 1b | Proteins 8% (4%) | 5 | Leukocytes (white blood corpuscles) | 5f | Large lymphocyte |
| 1c | Organic acids 1% (0.5%) | | | | |
| 1d | Salts 1% (0.5%) | | | | |