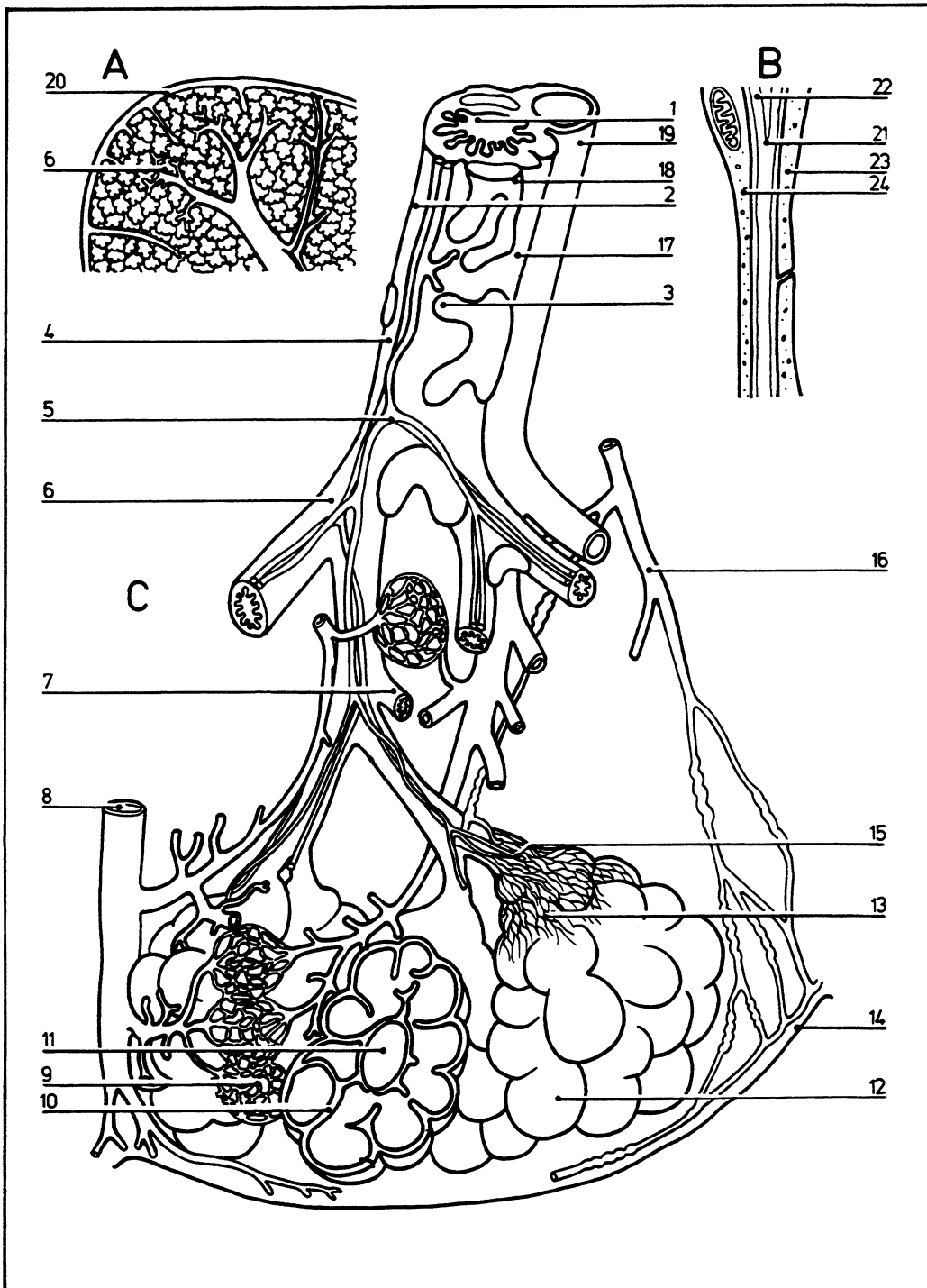


Bronchioles and alveoli

07.021



- | | | | | | | | |
|----------|--|----------|--|-----------|---|-----------|-----------------------|
| A | Section showing division of air passages and blood vessels | 1 | Small bronchus | 9 | Capillary network in alveolar wall | 15 | Alveolar duct |
| | | 2 | Smooth muscle fibers | 10 | Interalveolar septum | 16 | Lymphatic vessel |
| B | Blood-air barrier on electron microscopy | 3 | Elastic network beneath smooth muscle fibers | 11 | Atrium linking alveolar duct and alveolar sac | 17 | Mucosal gland |
| | | 4 | Bronchial nerve | 12 | Alveolus | 18 | Cartilage |
| C | Schematized diagram of bronchial tree and its blood, lymph, and nerve supply | 5 | Bronchial artery | 13 | Elastic network in alveolar wall | 19 | Pulmonary artery |
| | | 6 | Terminal bronchiole | 14 | Submesothelial connective tissue | 20 | Pleura |
| | | 7 | Respiratory bronchiole | | | 21 | Basement membrane |
| | | 8 | Pulmonary vein | | | 22 | Border membrane |
| | | | | | | 23 | Capillary endothelium |
| | | | | | | 24 | Alveolar epithelium |