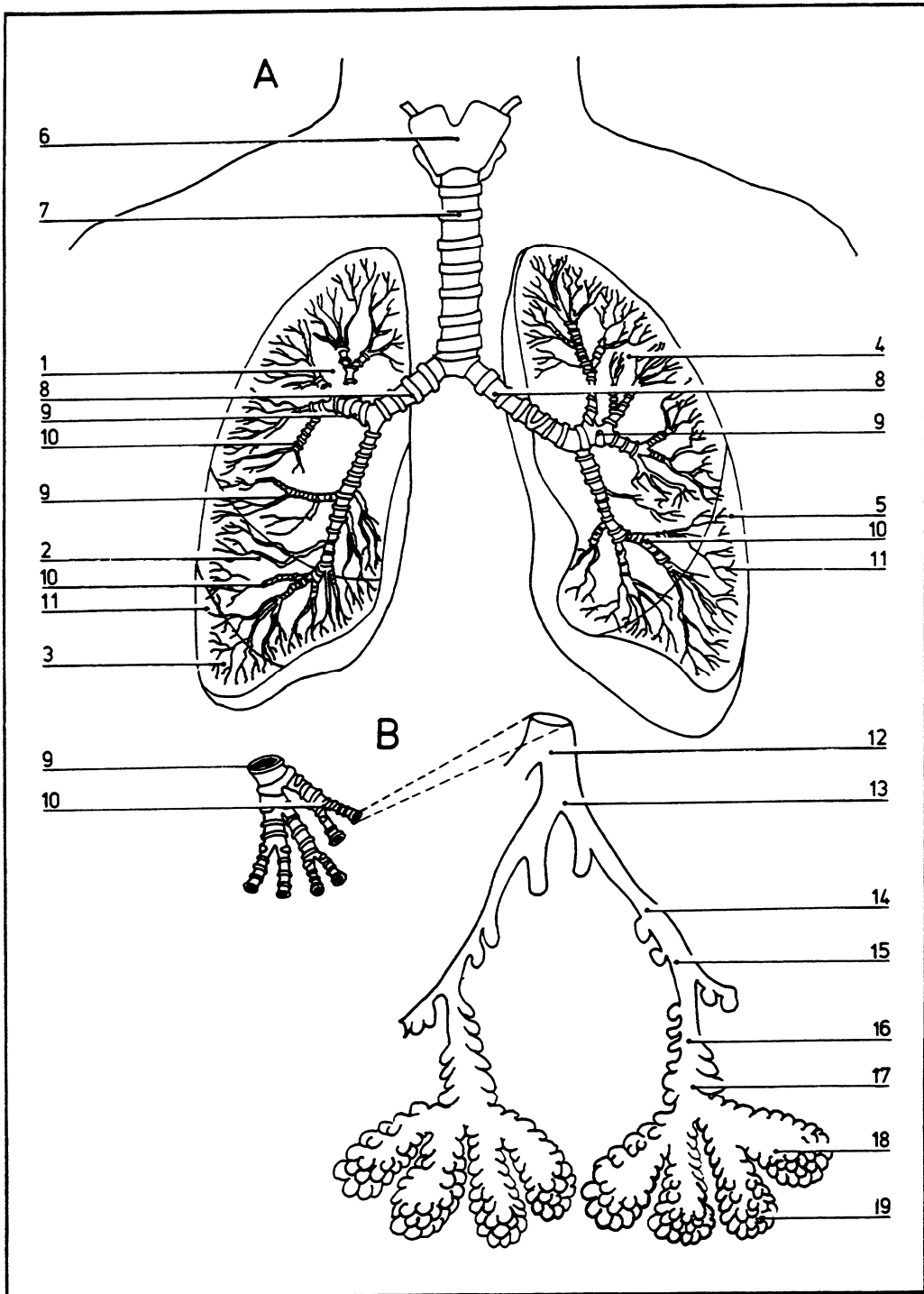


# Lungs: 3

07.019



- |          |   |    |                          |    |                        |
|----------|---|----|--------------------------|----|------------------------|
| <b>A</b> | General arrangement of the bronchial tree   | 3  | lung                     | 12 | Terminal bronchus      |
| <b>B</b> | Gross structure of the conducting and respiratory parts of the trachea and lungs at segmental level | 4  | Lower lobe of right lung | 13 | Lobular bronchiole     |
|          |   | 5  | Upper lobe of left lung  | 14 | Terminal bronchiole    |
|          |   | 6  | Lower lobe of left lung  | 15 | Respiratory bronchiole |
|          |   | 7  | Pharynx                  | 16 | Alveolar duct          |
|          |   | 8  | Trachea                  | 17 | Atrium                 |
|          |   | 9  | Principal bronchi        | 18 | Alveolar sac           |
|          |   | 10 | Lobar bronchi            | 19 | Alveolus               |
|          |   | 11 | Segmental bronchi        |    |                        |
|          |   |    | Bronchioles              |    |                        |

©DIAGRAM