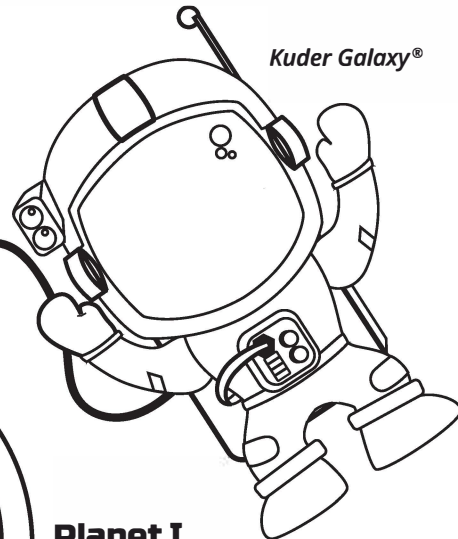
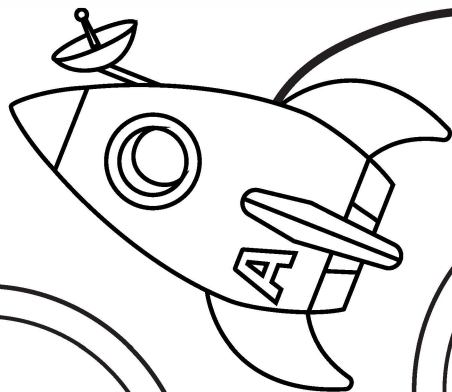


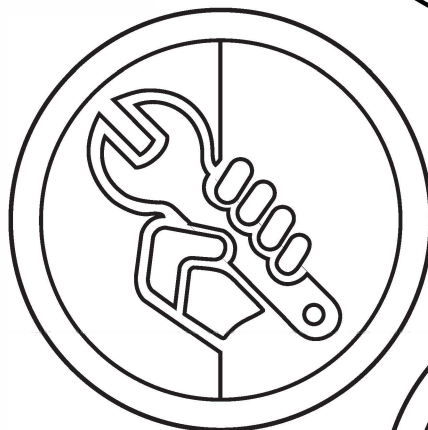


**OKLAHOMA**  
CareerTech

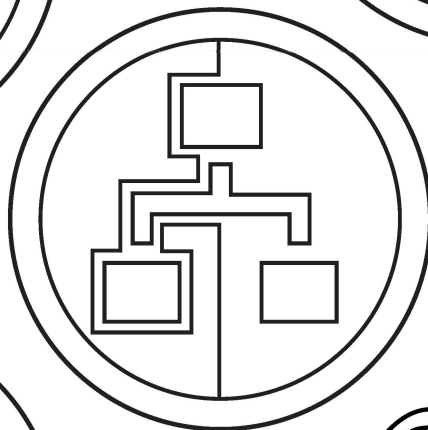
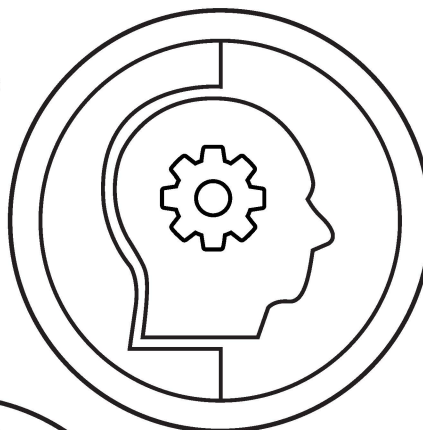
*Kuder Galaxy®*



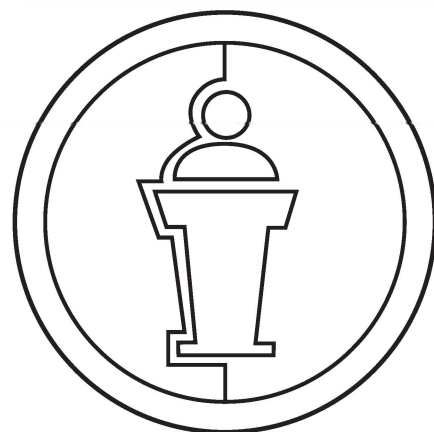
**Planet I**  
Investigative  
Planet



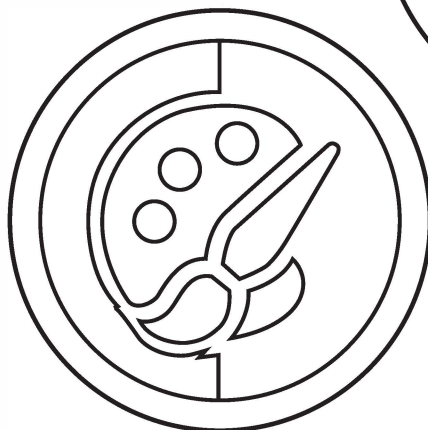
**Planet R**  
Realistic Planet



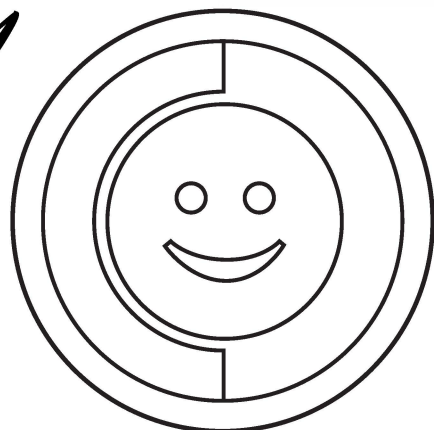
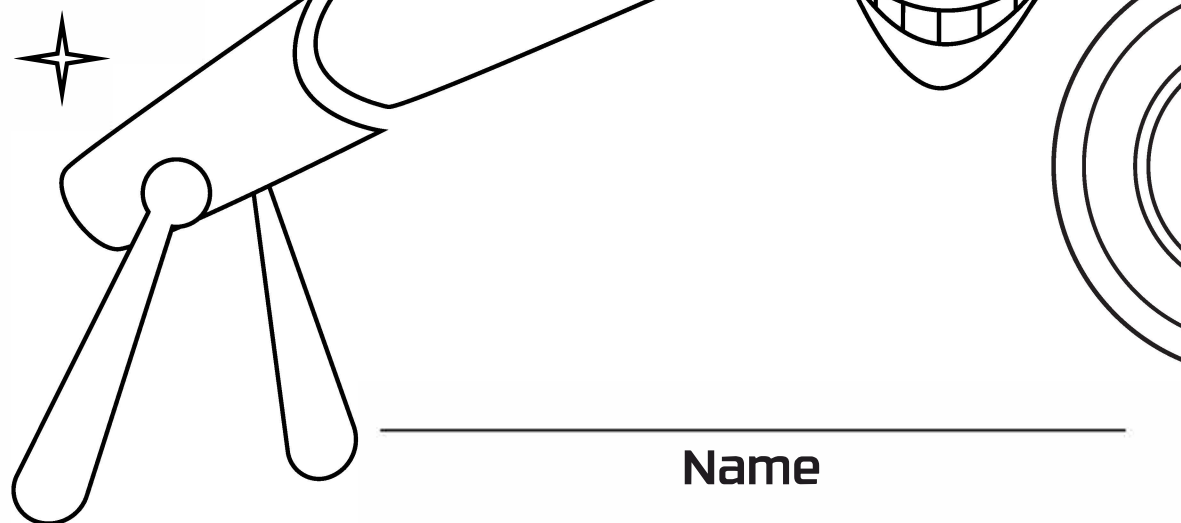
**Planet C**  
Conventional  
Planet



**Planet E**  
Enterprising  
Planet



**Planet A**  
Artistic Planet



**Planet S**  
Social Planet

\_\_\_\_\_  
**Name**



## Obe the Observer

(Level 1)

### The Big Question for Level 1: *Why do people work?*

#### The Big Adventure of Level 1

Obe the Observer, the commander of the Level 1 Base Camp, sends students on six planetary missions in the Galaxy of Work to learn about why people work. At the previous levels, students learned about what work is and what people do at work. Now, on Obe's missions, they start to think about reasons people work, beyond supplying basic needs. The focus on work values at each of these planets is grounded in the well-researched Super's Work Values Inventory-Revised as well as on the work values of O\*NET, the Occupational Information Network. Work values are expressions of different types of satisfactions that can be attained through work. Work values apply to jobs across the planetary

spectrum, but on Level 1, students encounter specific work values on planets with work environments that align particularly well with those values. Obe's missions ask, "What work values are satisfied by going to work?"

That's what we are about to explore. As your child learns more about the focus for each of the six planets, talk about your own job and the jobs done by people you know. Why do you work? What aspects of your job do you find satisfying? What needs or goals does having a job fulfill for you? Different people value different aspects of their jobs. Imagine together why people do the jobs they do.

### Student Learning Objectives for Level 1

***After completing Level 1, students will be able to do the following:***

- Name a number of jobs people in the community have.
- Name reasons why people work, beyond satisfying basic needs.
- Discuss ways in which different jobs satisfy different work values.
- Recognize that different individuals value different reasons for work.
- Identify some of reasons for why they might want to work in the future.
- Explain why they find some tasks more satisfying than others in terms of work values.
- Describe how the work done by different people at school satisfies different work needs.
- Explain how money is used.
- Distinguish between basic needs and lifestyle wants.