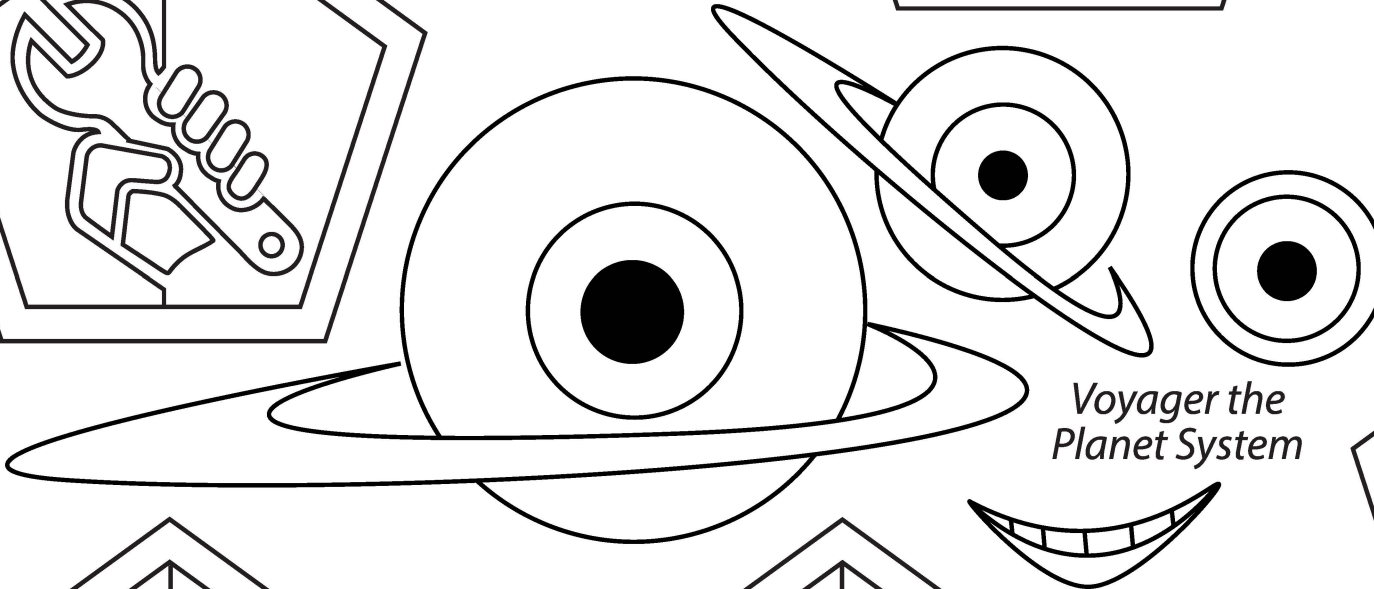
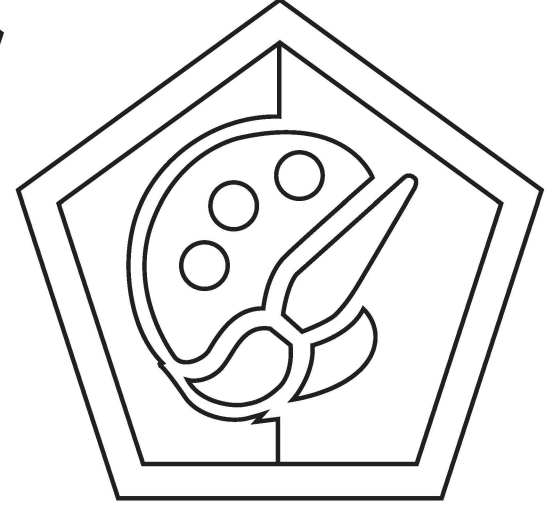
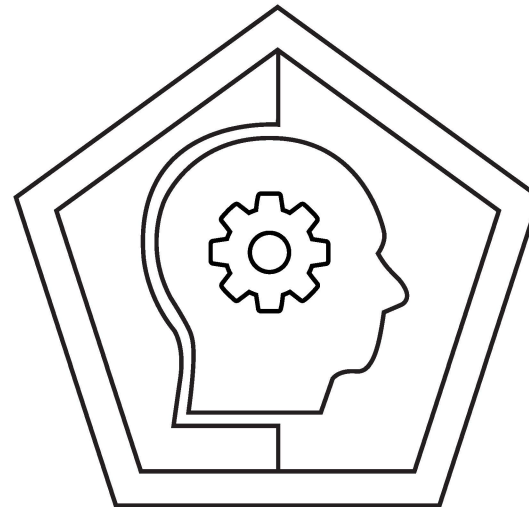
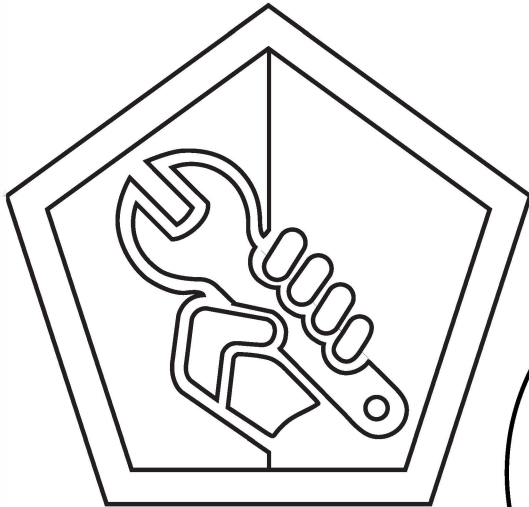
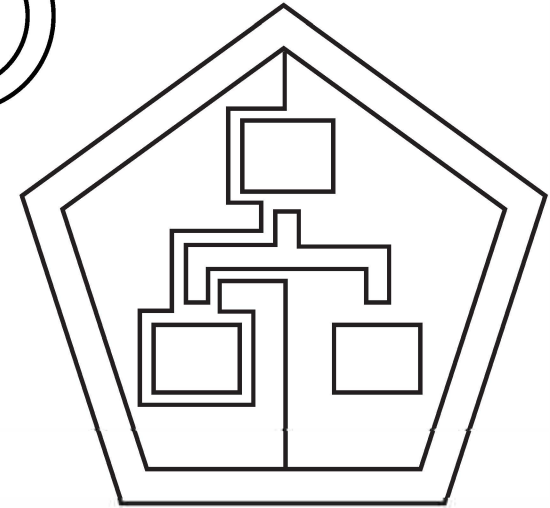
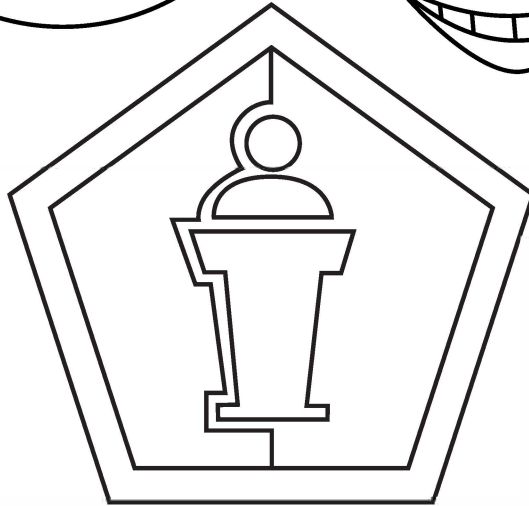
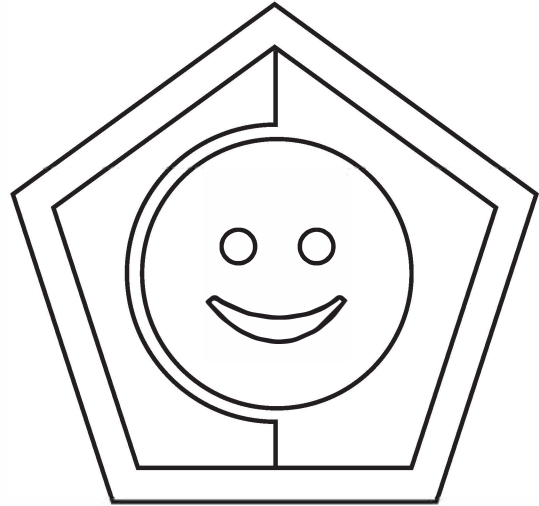


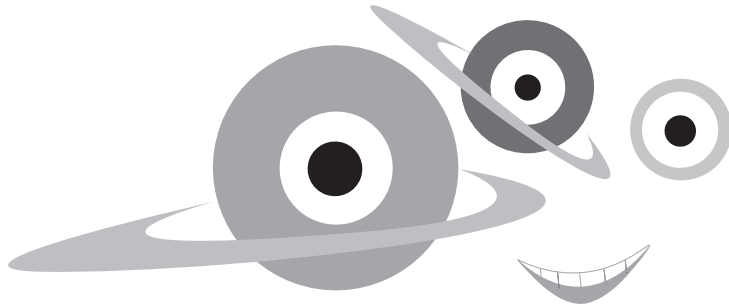
# Where And How Do People Work?



*Voyager the  
Planet System*



\_\_\_\_\_ Name



## Voyager the Planet System (Level 3)

### The Big Question for Level K: *Where and how do people work?*

#### The Big Adventure of Level 3

Voyager, the commander of the Level 3 Base Camp, sends students on six virtual field trips in the Galaxy of Work to learn about different work settings. Where do people do their jobs and in what working conditions? Students discover that different groups of occupations appeal to people with different interests and work preferences. They have visited the six planets in the Galaxy of Work at earlier levels, but here at Level 3 they are introduced to the kinds of interests, work tasks and work environments represented by each planet's name, which is based on John Holland's six well-researched

career interest clusters. Children may start to realize they feel more at home on some planets than others as they consider their own developing interests and preferences. As you and your child learn more about the focus for each of the six planets, talk about your job and the jobs done by other people you know. Try to decide together on which planet those jobs might be found. You can learn more about the interests and work environment for each of the Holland clusters on the pages for each planet on this level.

#### Student Learning Objectives for Level 3

*After completing Level 3, students will be able to do the following:*

- Identify the many settings and conditions under which work takes place.
- Explain how the selection of setting or work conditions affects a person's satisfaction with work.
- Recognize that individuals have unique interests.
- Identify current personal interests.
- Identify a range of jobs available in the community and the larger working world.
- Describe work done by people at school and in the community.
- Identify appropriate speaking and listening techniques used in conversation.
- Discuss the importance of essential workplace skills.
- Identify additional occupations that are typical of each of the six Holland work environments.