

IT Essentials 5.0

5.5.1.11 Lab - Use the System Restore Tool in Windows 7

Introduction

Print and complete this lab.

In this lab, you will create a restore point and return your computer back to that point in time.

Recommended Equipment

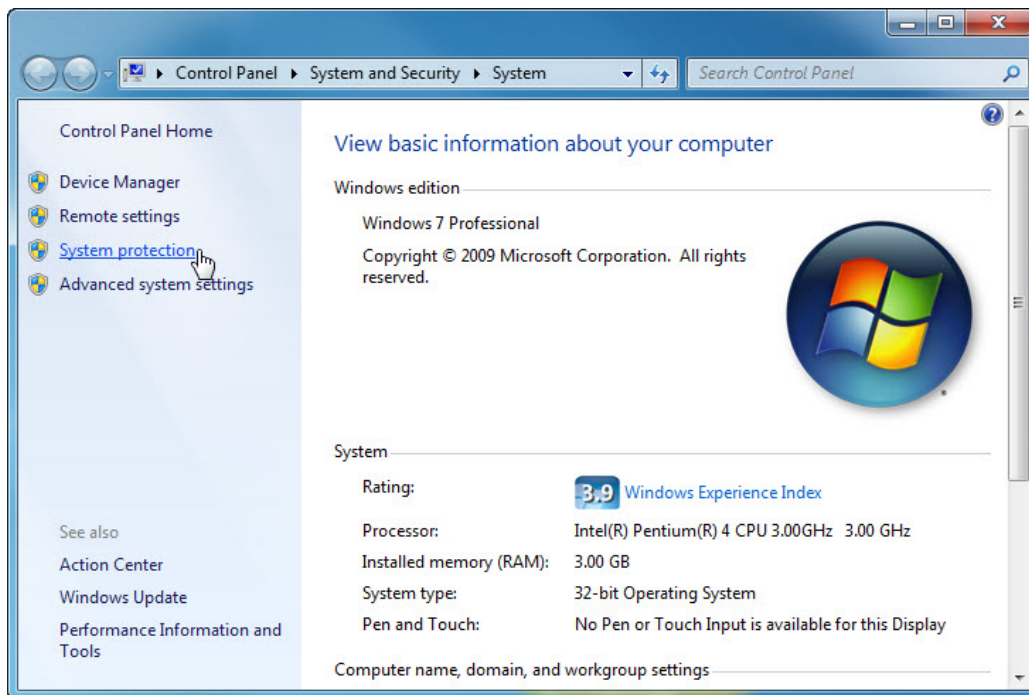
The following equipment is required for this exercise:

- A computer system running Windows 7

Step 1

Click **Start > right-click Computer > Properties**.

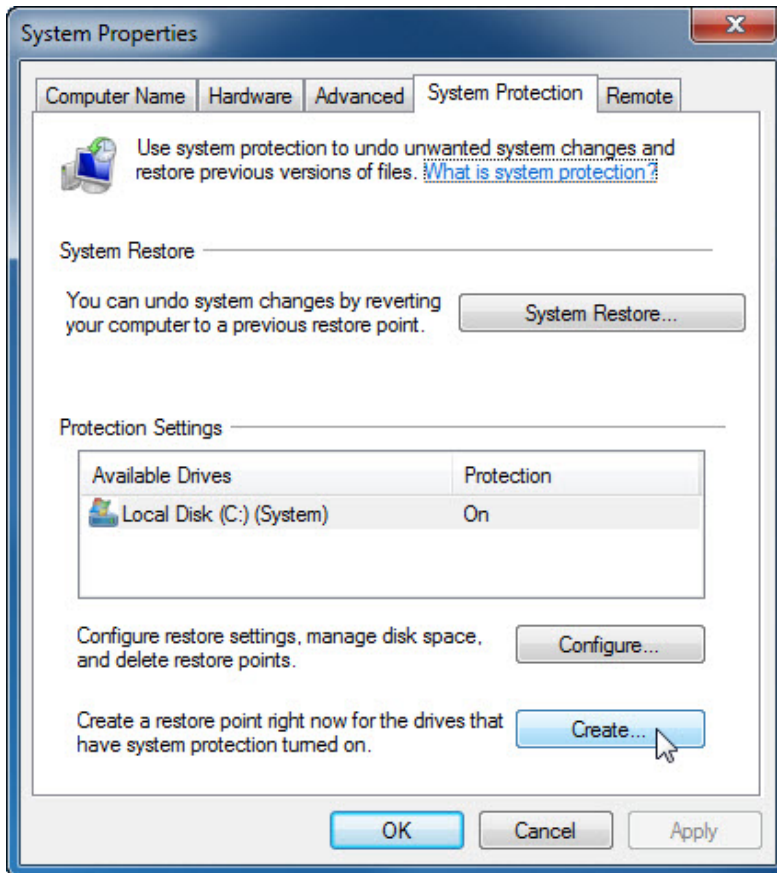
The “System” window opens.



To create a restore point, click **System protection**.

Step 2

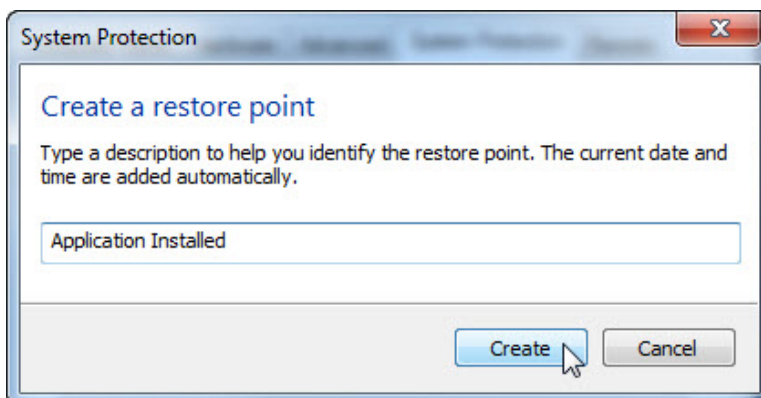
The “System Properties” window opens.



In the “System Protection” tab, click **Create**.

Step 3

In the “Create a restore point” description field, type **Application Installed**.

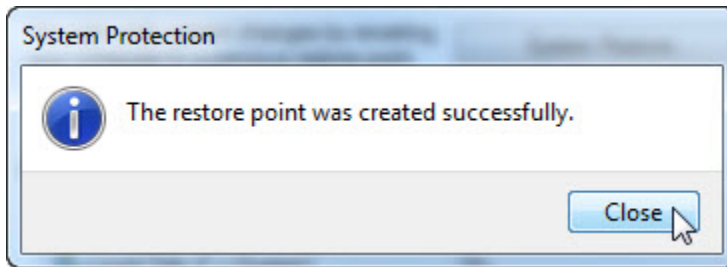


Click **Create**.

Step 4

After a period of time, a “The restore point was created successfully” message appears.

Click **Close**.

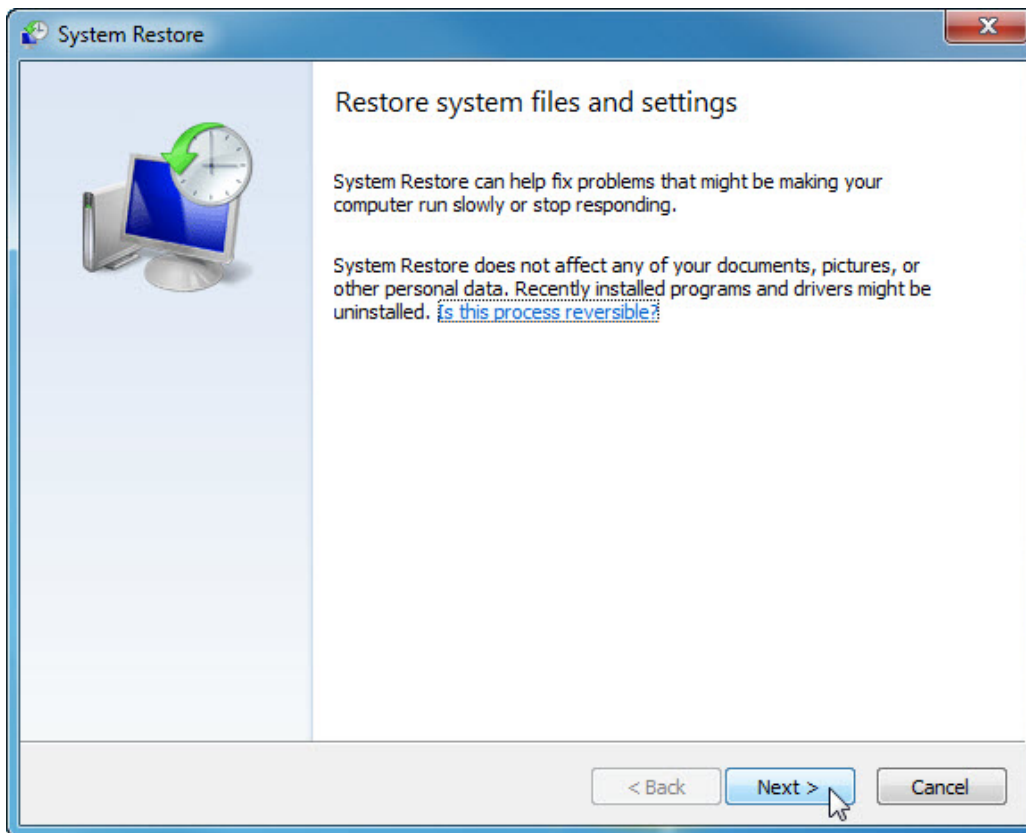


Click **OK** to close the "System Properties" window.

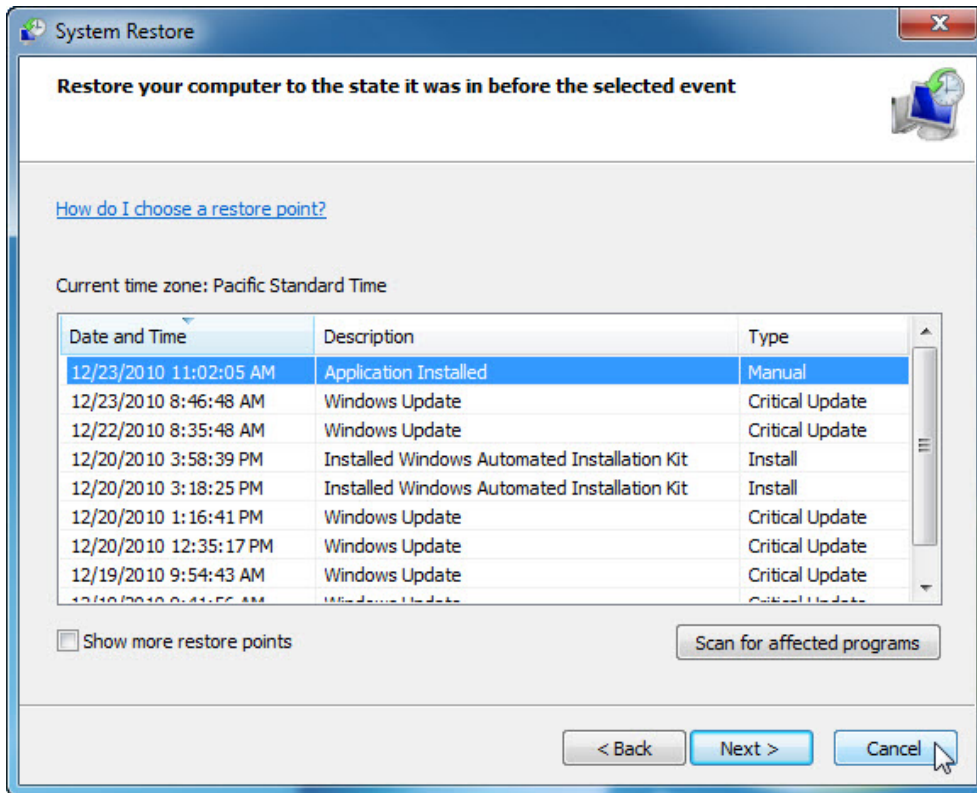
Step 5

Click **Start > All Programs > Accessories > System Tools > System Restore**.

When the "System Restore" Window opens, click **Next**.



A list of restore points is displayed.



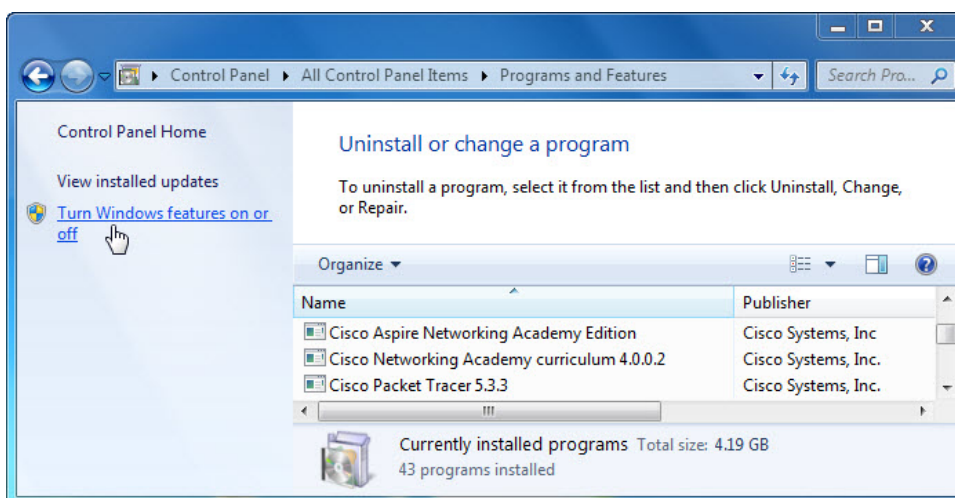
What “Type” is the restore point created by you?

Click **Cancel**.

Close all open windows.

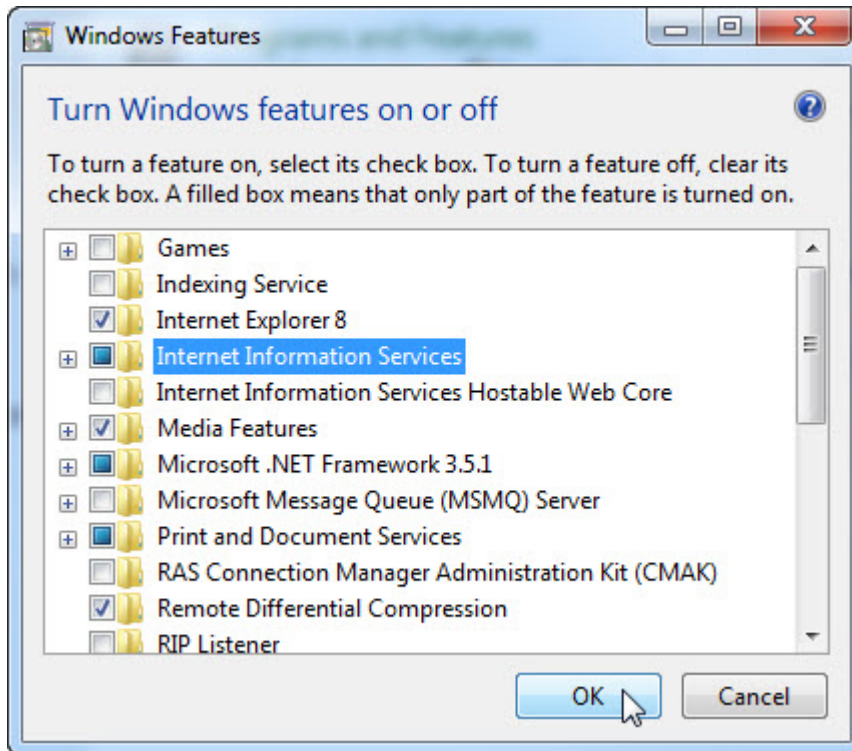
Step 6

Click **Start > Control Panel > Programs and Features > Turn Windows features on or off**.



Step 7

The “Windows Features” window opens.

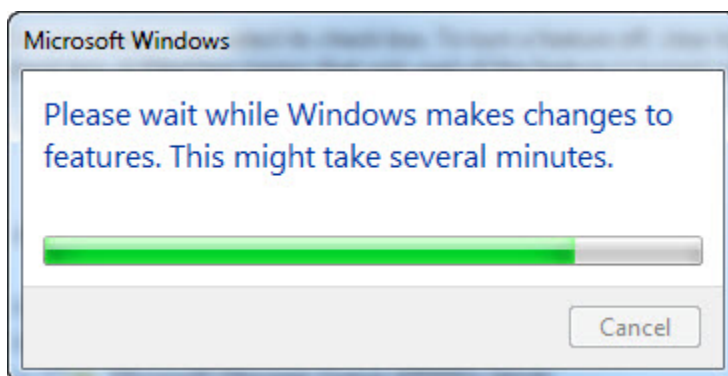


Click the **Internet Information Services** checkbox, and then click **OK**.

Step 8

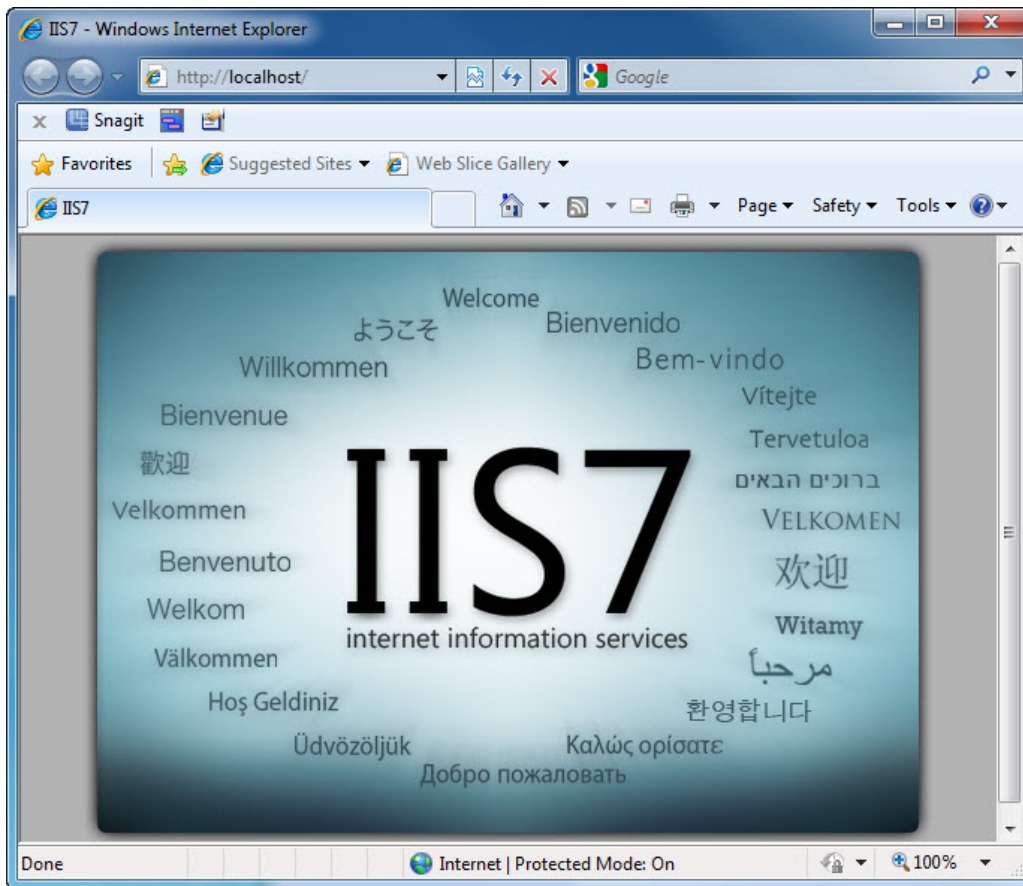
The configuring features progress window opens.

The progress window will close on its own when the configuration is completed.

**Step 9**

When you navigate in a browser to localhost, you will see the new IIS default page.

Click **Start >** in “Search programs and files” type **http://localhost**.



Close the browser.

Step 10

Open the Notepad application by clicking **Start > All Programs > Accessories > Notepad**.

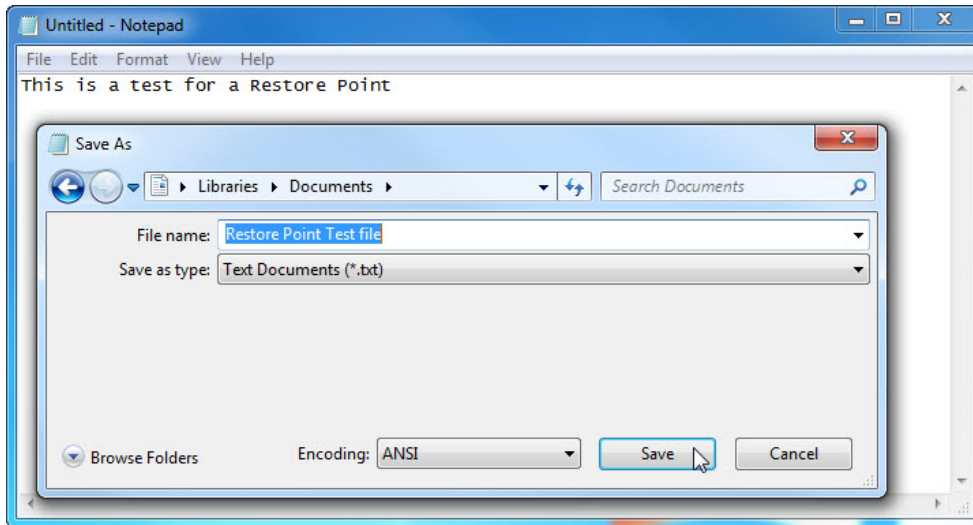
Type **This is a test for a Restore Point** in the Notepad application.

Click **File > Save As....**

Click **Documents**.

Type **Restore Point Test file** in the "File Name:" field.

Click **Save**.



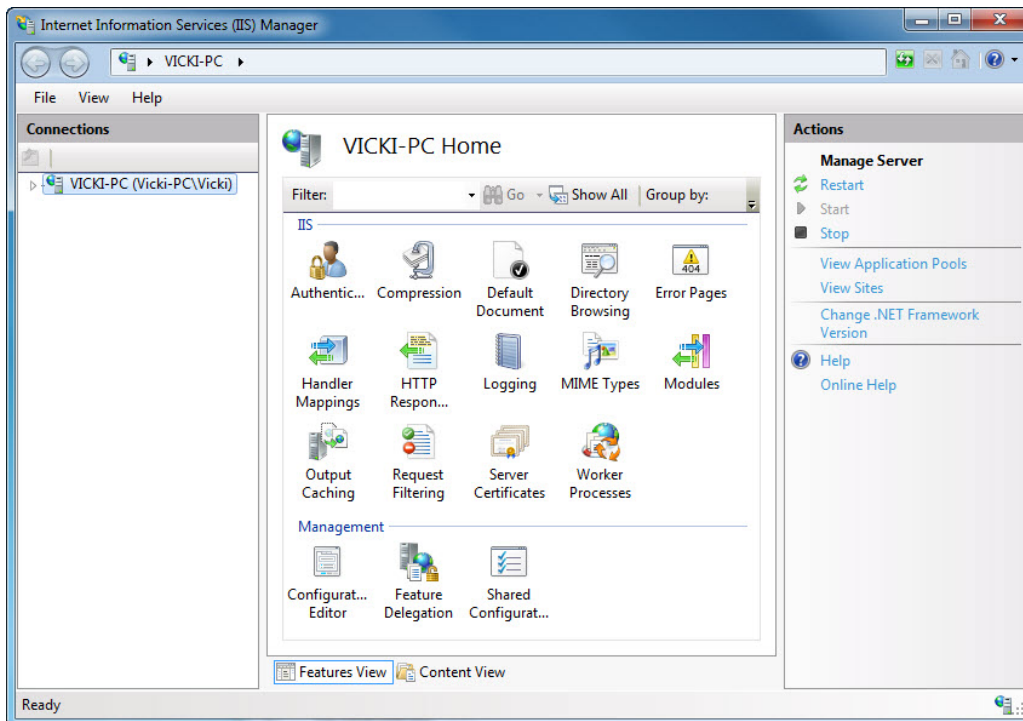
Click **File > Exit**.

Step 11

Open IIS to confirm that you have successfully installed this service.

Click **Start > Control Panel > System and Security > Administrative Tools > Internet Information Services (IIS) Manager**.

The "Internet Information Services (IIS) Manager" window opens.

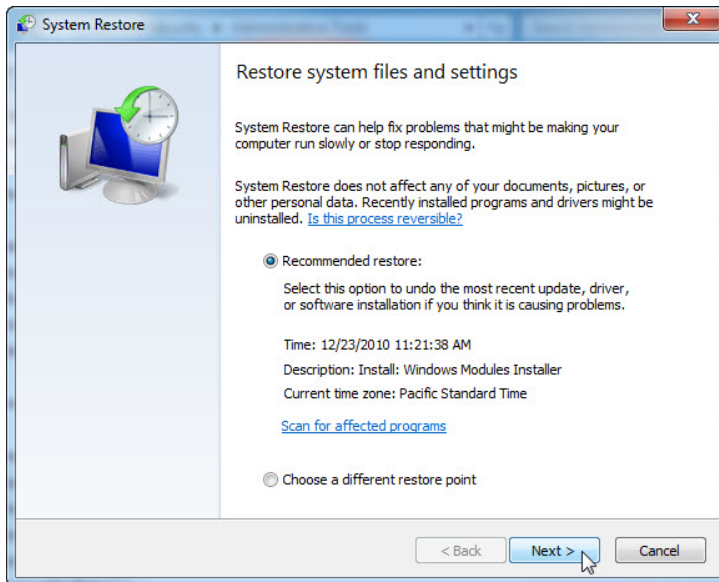


Click **File > Exit**.

Step 12

Click **Start > All Programs > Accessories > System Tools > System Restore**.

Select the **Recommended restore** radio button.

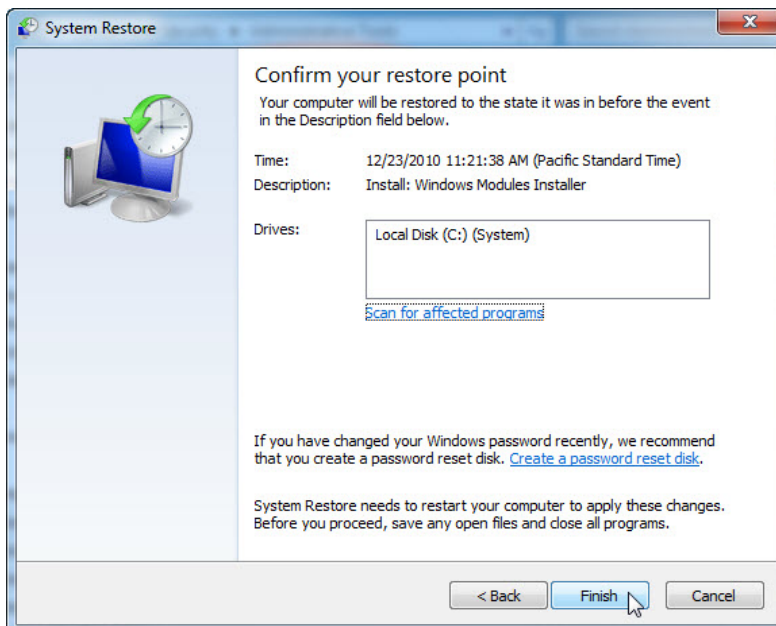


Click **Next**.

Step 13

The “Confirm your restore point” window appears.

Note: Close all applications before you click Finish. When you click Finish, Windows will restart the computer.



Click **Finish**.

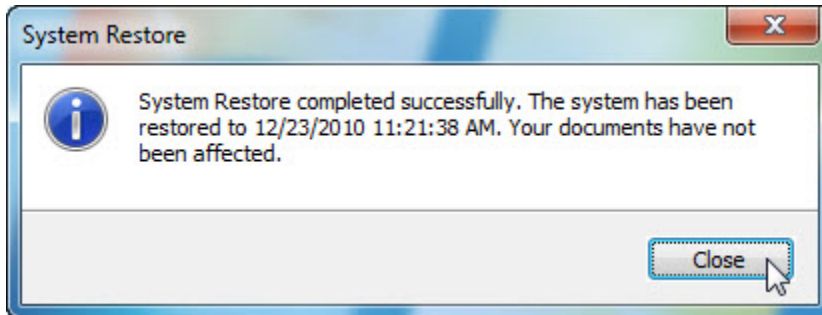
Click **Yes** to confirm “System Restore”.

The operating system restores to the point before the IIS application was installed. This can take several minutes to complete.

Step 14

Logon to the computer if required.

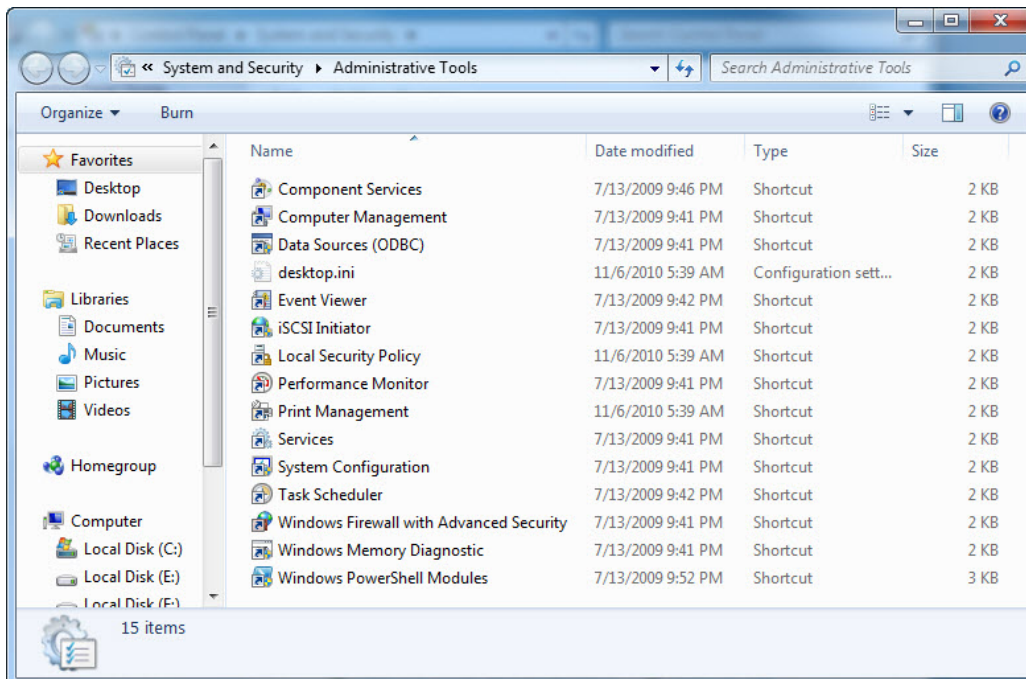
The “System Restore completed successfully” message appears.



Click **Close**.

Step 15

Click **Start > Control Panel > System and Security > Administrative Tools**.

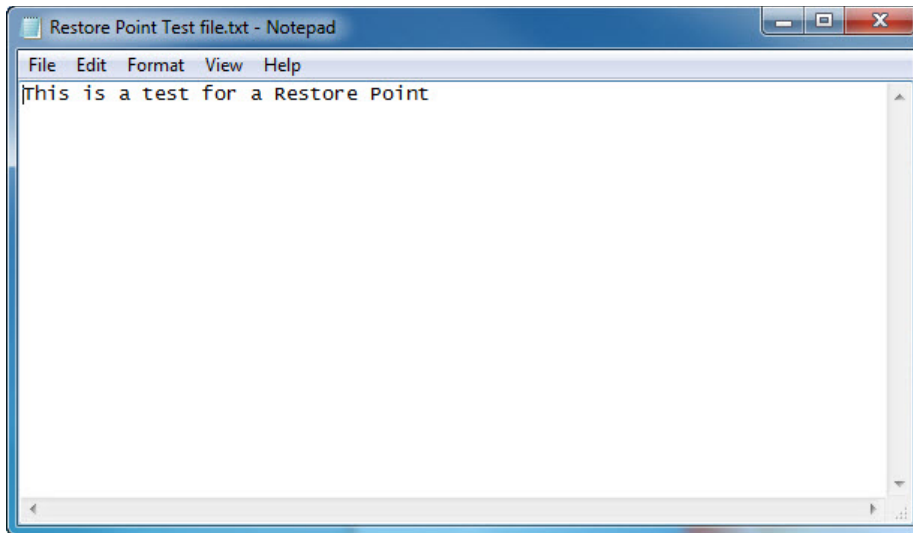


Is the IIS Manager application listed?

Step 16

Navigate to the “Documents” folder.

Open the "Restore Point Test file.txt" file.



Are the contents the same?