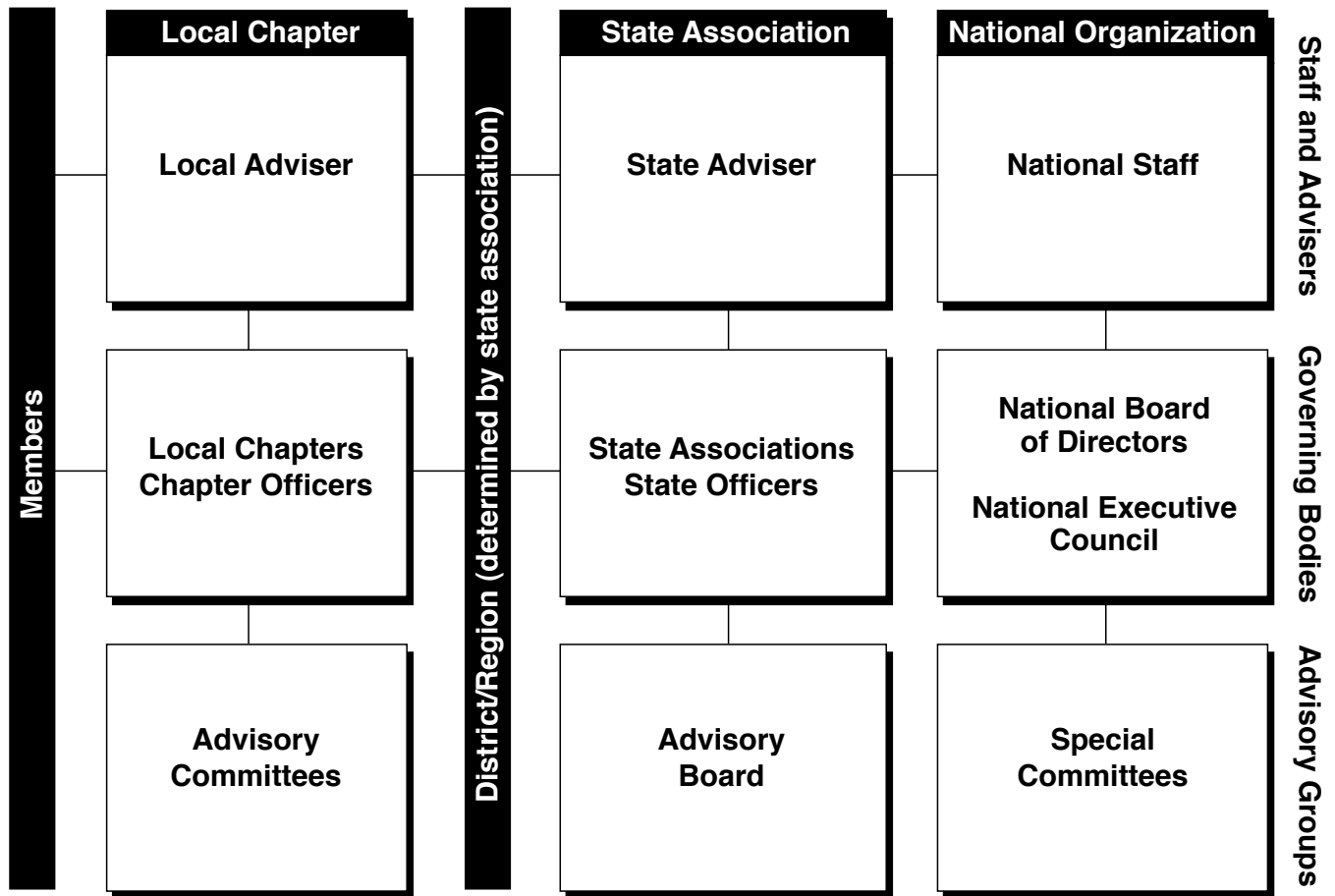
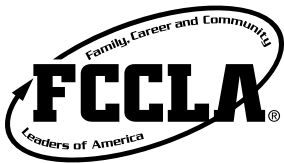


FCCLA: A National Organization





FCCLA: A National Organization

CHAPTER

Local chapters operate within Family and Consumer Sciences programs in schools. Chapters elect their own leaders, and the number of leaders may vary. A Family and Consumer Sciences certified, or as determined by the state department or education, teacher serves as adviser. To be an FCCLA chapter, the group must affiliate with the state association and national Family, Career and Community Leaders of America.

Chapter structure and activities are determined by members and the adviser. They are financed through chapter dues, money-making activities, special grants and donations, or school activity monies. Some chapters find it advantageous to organize advisory committees made up of parents, chapter alumni and friends, Family and Consumer Sciences professionals, and community leaders who assist and support the chapter.

DISTRICT/REGION

Many states may have one or more organizational levels between the chapter and the state association. These levels may be designated as districts, areas, regions, federations, or parishes. The term “district/region” refers to all such levels. The district/region level provides additional opportunities for student leadership and learning. Also, there is often a local adviser who serves as district/region adviser and is a nearby source of information and support for chapter advisers.

Contact your FCCLA state adviser for additional information regarding how the organization is structured in your state.

STATE ASSOCIATION

The state association provides leadership and assistance for chapters within the state. The State Executive Council is made up of youth members elected by the state membership. The number of officers and their qualifications are determined by the state. State association programs support the national organization’s Mission, Purposes, policies, and bylaws. State bylaws must conform to national bylaws. State dues, determined by each state’s membership, help finance state-level activities. The FCCLA state adviser works with the State Executive Council and adviser leaders to manage the state association and is a key source of information about the organization and its programs.

NATIONAL

Affiliation with the FCCLA national organization enables members to participate in programs, projects, and/or issues (such as traffic safety or educational legislation) that have national significance. A greater impact is made when all states work together on issues such as strengthening families, preventing violence, serving communities, or increasing career preparedness.

The national organization provides opportunities for member recognition and for chapters to build public and media visibility. It also gives continuity and direction to chapters nationwide, creating a strong network of local chapters. Through national publications, National Cluster Meetings, and the

National Leadership Conference, members can gather and share information with their peers in other states. Working with others and having leadership experiences beyond the local level are important member benefits.

With a large membership base, individual dues make possible programs, services, and opportunities that are otherwise beyond chapter capabilities. The FCCLA national organization provides a variety of services to support and expand chapters’ efforts, including:

- *Teen Times*, the national member magazine
- *The Adviser* newsletter for adult leaders

- informative chapter mailings and promotional materials
- national programs
- program materials and chapter resources
- National Cluster Meetings and the National Leadership Conference
- training for adult and student leaders
- a “voice” in the national education arena
- national promotion of the organization
- leadership through the National Executive Council and National Board of Directors
- a professional staff that provides these and other services.