

OKLAHOMA

FCCLA

NEW

ADVISER

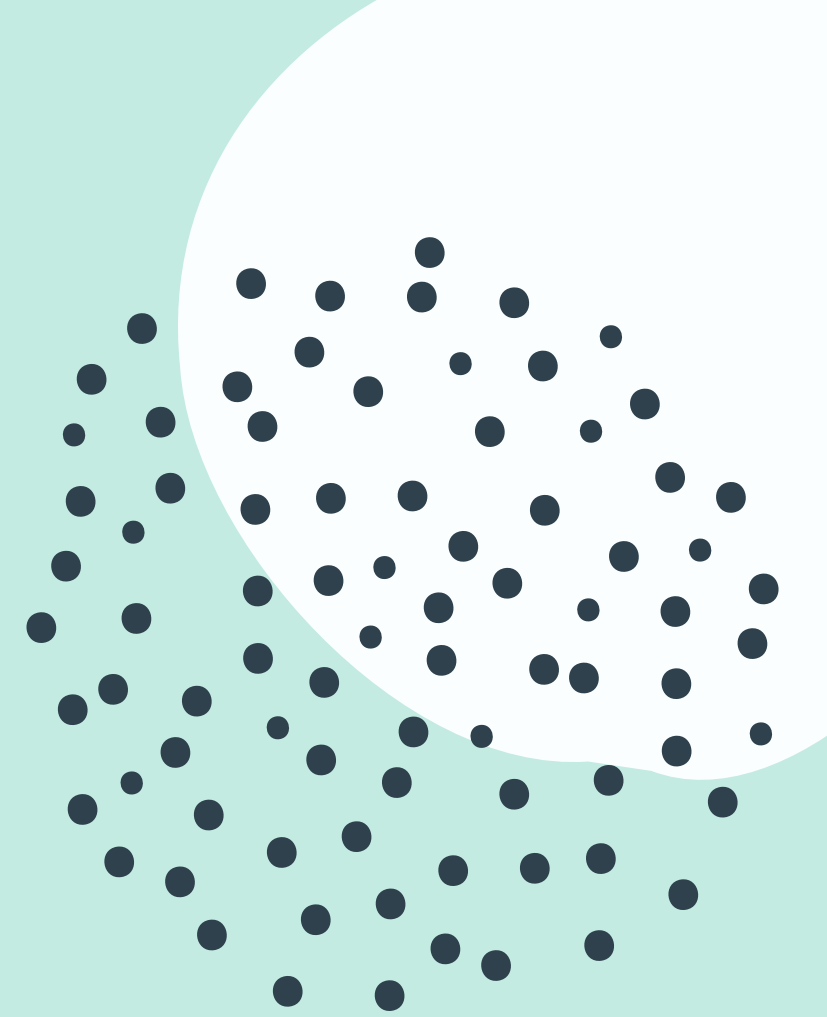
TRAINING



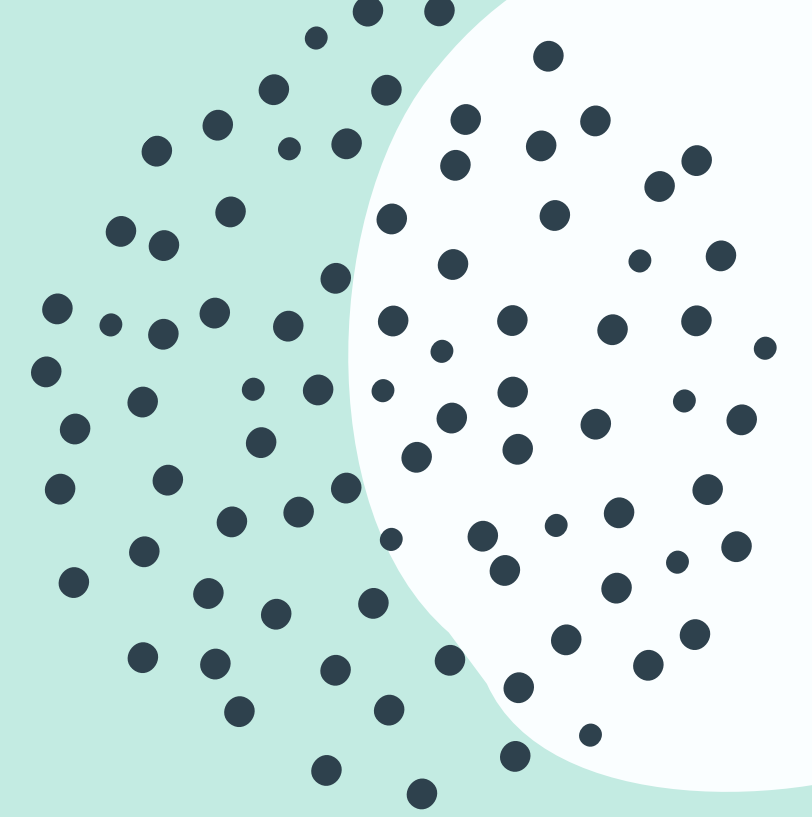
Housekeeping

JUST A FEW REMINDERS

- Share photos from today's workshop on social media and **tag @oklahomafccla**
- Stop us if you have questions or are lost or confused! Questions can also be written on a sticky note and placed on the appropriate “parking lot”.
- Feel free to tell us to slow down!
- Have fun and learn new things!!
- Participate!



WEBSITE, CALENDAR & DEADLINE CALENDAR



<https://oklahomafccla.org/calendar-of-events>



<https://drive.google.com/file/d/1updKbKs84c5-fahCbLOY9igJTWncSXT8/view>

Scan here for a
detailed, monthly
checklist!





Where is it
on the site?



FCCLA 101

HISTORY OF FCCLA

<https://oklahomafccla.org/about-fccla-1>

REGIONS OF **Oklahoma FCCLA**

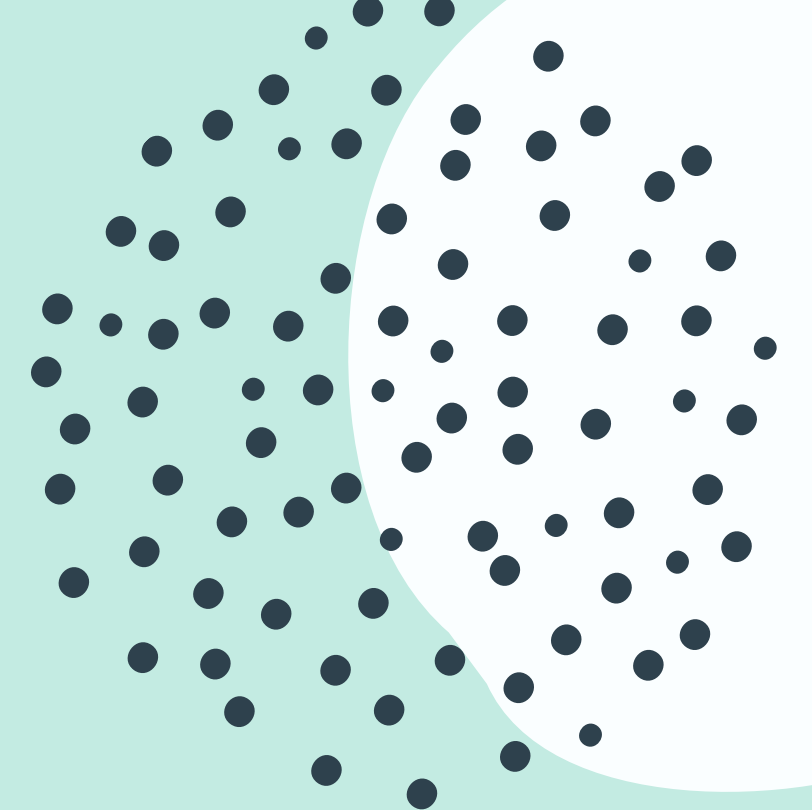
WHY FCCLA?

BASIC MEMBERSHIP COURSES



FCCLA HISTORY

FCCLA, Family Career and Community Leaders of America, is the only in-school, student led organization with the family as its central focus.

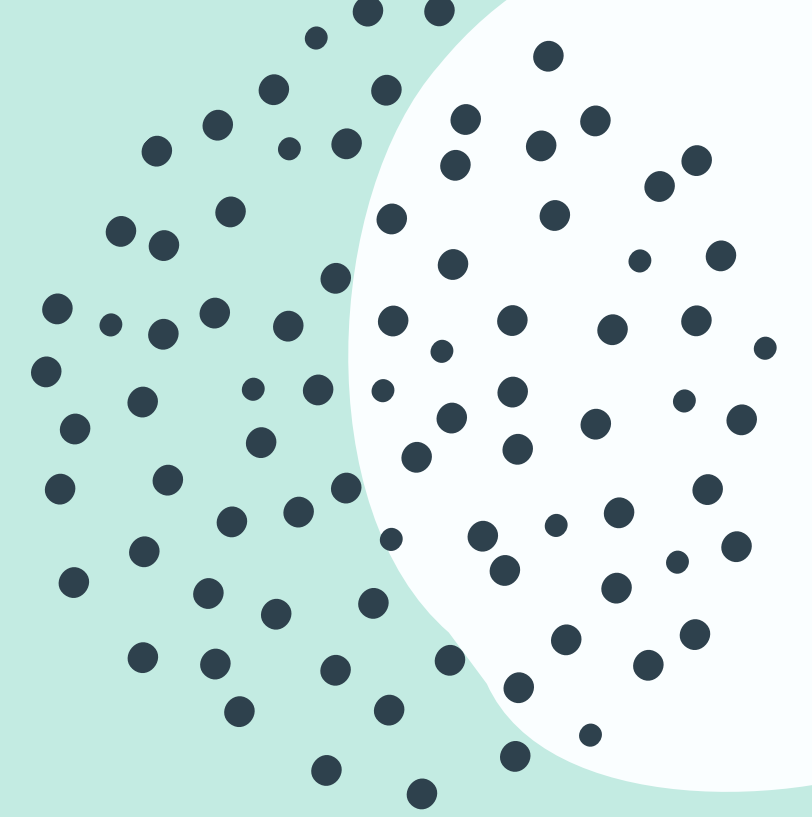


THE ORGANIZATION WAS
FOUNDED JUNE 11, 1945
AS FUTURE
HOMEMAKERS OF
AMERICA (FHA)

OKLAHOMA
ASSOCIATION
ESTABLISHED ON
FEBRUARY 4, 1946; 18th
STATE ASSOCIATION

VOTED TO CHANGE THE
NAME TO FAMILY,
CAREER AND
COMMUNITY LEADERS
OF AMERICA (FCCLA) AT
THE 1999 NLC.

FCCLA HISTORY



MALES AND FEMALES
ARE WELCOMED INTO
THE ORGANIZATION

EACH YEAR OVER
237,000 STUDENTS JOIN
OVER 5,100 CHAPTERS

THE ORGANIZATION
ENCOURAGES PERSONAL
GROWTH AND
LEADERSHIP
DEVELOPMENT THROUGH
FCS COURSES.



FCCLA MISSION

TO PROMOTE PERSONAL GROWTH AND LEADERSHIP DEVELOPMENT THROUGH FAMILY AND CONSUMER SCIENCES EDUCATION.

FOCUSING ON THE MULTIPLE ROLES OF FAMILY MEMBER, WAGE EARNER, AND COMMUNITY LEADER, MEMBERS DEVELOP SKILLS FOR LIFE THROUGH---

- CHARACTER DEVELOPMENT
- CREATIVE AND CRITICAL THINKING
- INTERPERSONAL COMMUNICATION
- PRACTICAL KNOWLEDGE
- CAREER PREPARATION

FCCLA PURPOSES

1. TO PROVIDE OPPORTUNITIES FOR PERSONAL DEVELOPMENT AND PREPARATION FOR ADULT LIFE
2. TO STRENGTHEN THE FUNCTION OF THE FAMILY AS A BASIC UNIT OF SOCIETY
3. TO ENCOURAGE DEMOCRACY THROUGH COOPERATIVE ACTION IN THE HOME AND COMMUNITY
4. TO ENCOURAGE INDIVIDUAL AND GROUP INVOLVEMENT IN HELPING ACHIEVE GLOBAL COOPERATION AND HARMONY
5. TO PROMOTE GREATER UNDERSTANDING BETWEEN YOUTH AND ADULTS
6. TO PROVIDE OPPORTUNITIES FOR MAKING DECISIONS AND FOR ASSUMING RESPONSIBILITIES.
7. TO PREPARE FOR THE MULTIPLE ROLES OF MEN AND WOMEN IN TODAY'S SOCIETY
8. TO PROMOTE FAMILY AND CONSUMER SCIENCES AND RELATED OCCUPATIONS

FCCLA HISTORY

Motto: Toward New Horizons

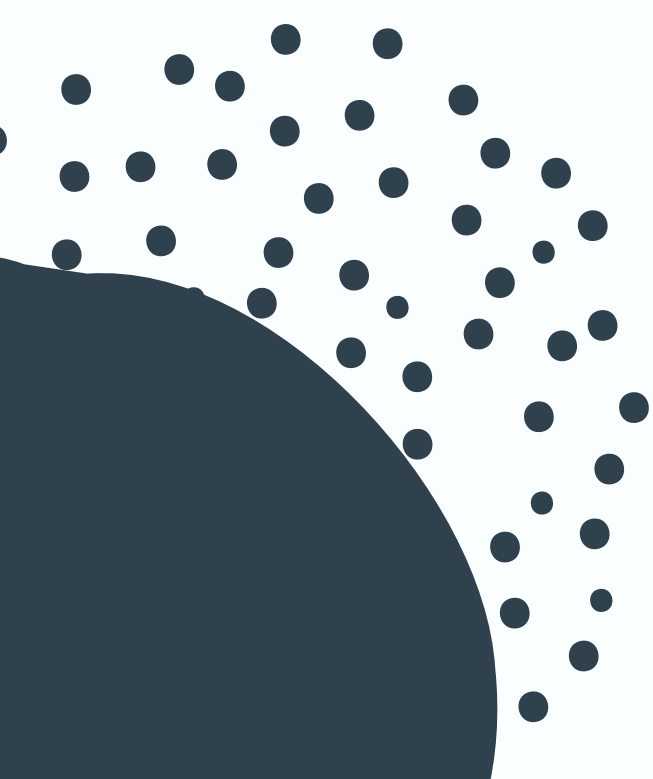
Tagline: The Ultimate Leadership Experience

Official Flower: Red Rose

Official Colors:

- Red – suggests strength, courage, and determination
- White -- sincerity of purpose and integrity of action

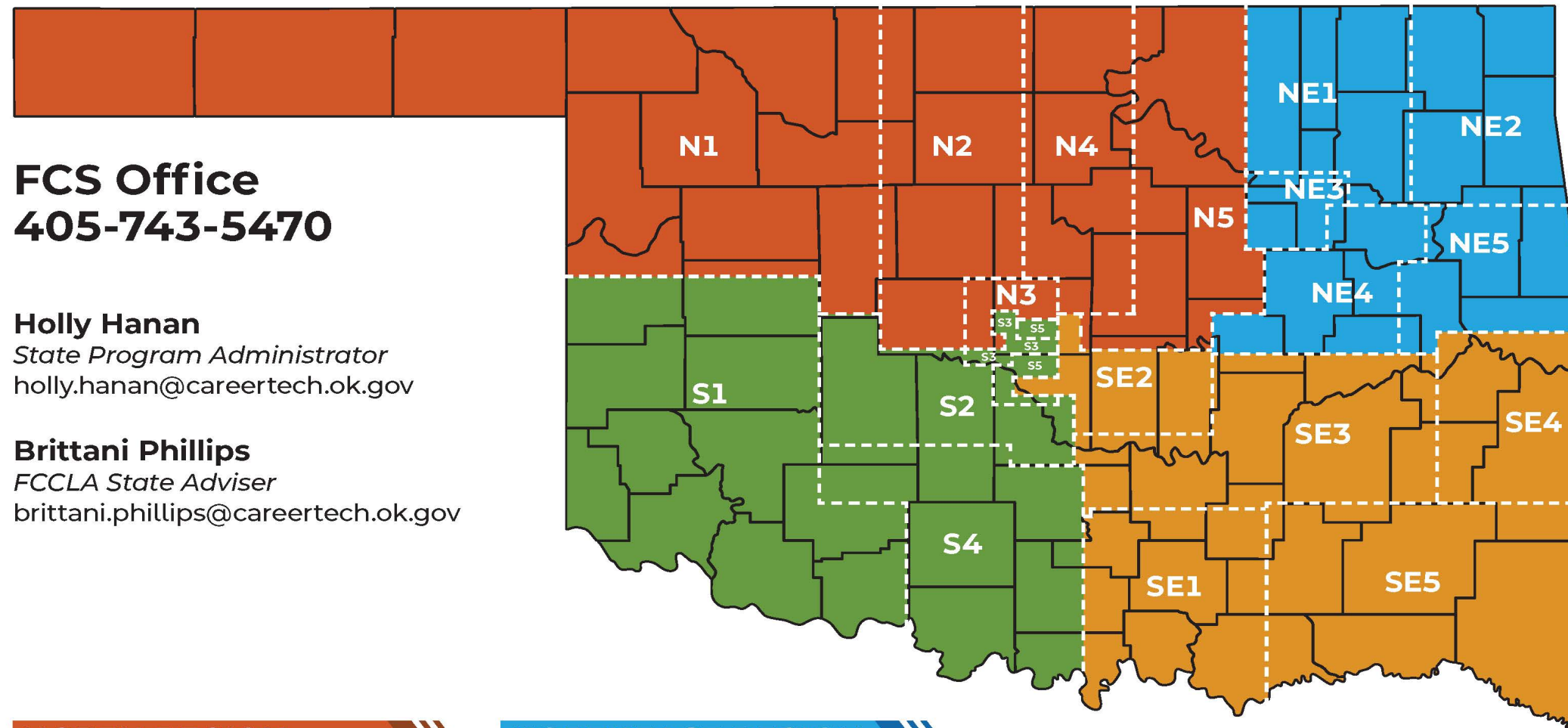
NATIONAL ASSOCIATION

- 
- 250,000 MEMBERS FROM 5,100 CHAPTERS IN 47 STATE ASSOCIATIONS
 - HEADQUARTERED IN HERNDON, VIRGINIA
 - DIVIDED INTO 4 REGIONS (NORTH ATLANTIC, CENTRAL, SOUTHERN AND PACIFIC)
 - GOVERNED BY THE NATIONAL BOARD OF DIRECTORS, NATIONAL OFFICERS
 - NATIONAL STAFF- 16 INDIVIDUALS

OKLAHOMA

REGIONS

FAMILY AND CONSUMER SCIENCES EDUCATION/FCCLA 2025-26 REGIONS AND DISTRICTS



FCS Office
405-743-5470

Holly Hanan
State Program Administrator
holly.hanan@careertech.ok.gov

Brittani Phillips
FCCLA State Adviser
brittani.phillips@careertech.ok.gov

NORTH REGION

Teena Friend
teena.friend@careertech.ok.gov

SOUTH REGION

Jessica Maker
jessica.maker@careertech.ok.gov

NORTHEAST REGION

Jessi Beebe
jessi.beebe@careertech.ok.gov

SOUTHEAST REGION

Christina Spurgin
christina.spurgin@careertech.ok.gov



OKLAHOMA
CareerTech

FCS Family and Consumer Sciences
FCCLA - Family, Career and Community Leaders of America

OKLAHOMA ASSOCIATION

**We are here
to help!**



Advising can be overwhelming at time. The Oklahoma FCS/FCCLA staff is here to help! Call or e-mail us any time you need assistance with rules, policies, procedures, or other questions

Oklahoma FCCLA: 405-743-5467

Brittani Phillips
State Adviser

brittani.phillips@careertech.ok.gov

Ashli Hall
Administrative Assistant/
FCCLA Bookkeeper
ashli.hall@careertech.ok.gov

**Competitive Events
Conference Logistics
Programming
Officer Information**

**Registration Sites
Finance/Payment Questions
Exhibitor Information
Website**

Not sure who to contact? Any FCS staff member can assist with general questions.

- **24,109** members from **376** chapters with **405** affiliated advisors
- Headquartered in **Stillwater, Oklahoma**
- Divided into **4** regions
- Governed by the **Oklahoma Department of Career Tech** and State Executive Council

Chapter Basics

WHO CAN JOIN

OFFICERS

HOW TO RUN A MEETING

BRANDING & TSHIRTS

FUNDRAISING

AFFILIATION



MEMBERSHIP REQUIREMENTS

WHO IS ELIGIBLE TO BE A MEMBER OF FCCLA?

Any student who has taken a course in Family and Consumer Sciences, middle school through grade 12+ is eligible for active membership in an organized FCCLA chapter within their school. Once the state and national dues are paid, the student will be an official affiliated member. Teachers can join FCCLA too! Teachers certified to teach Family and Consumer Sciences education, or as determined by the state department of education and CareerTech, can serve as the FCCLA chapter adviser.

It is illegal to state you have FCCLA and not affiliate



FIGURE OUT CHAPTER SETUP



ONE TEACHER DEPARTMENT

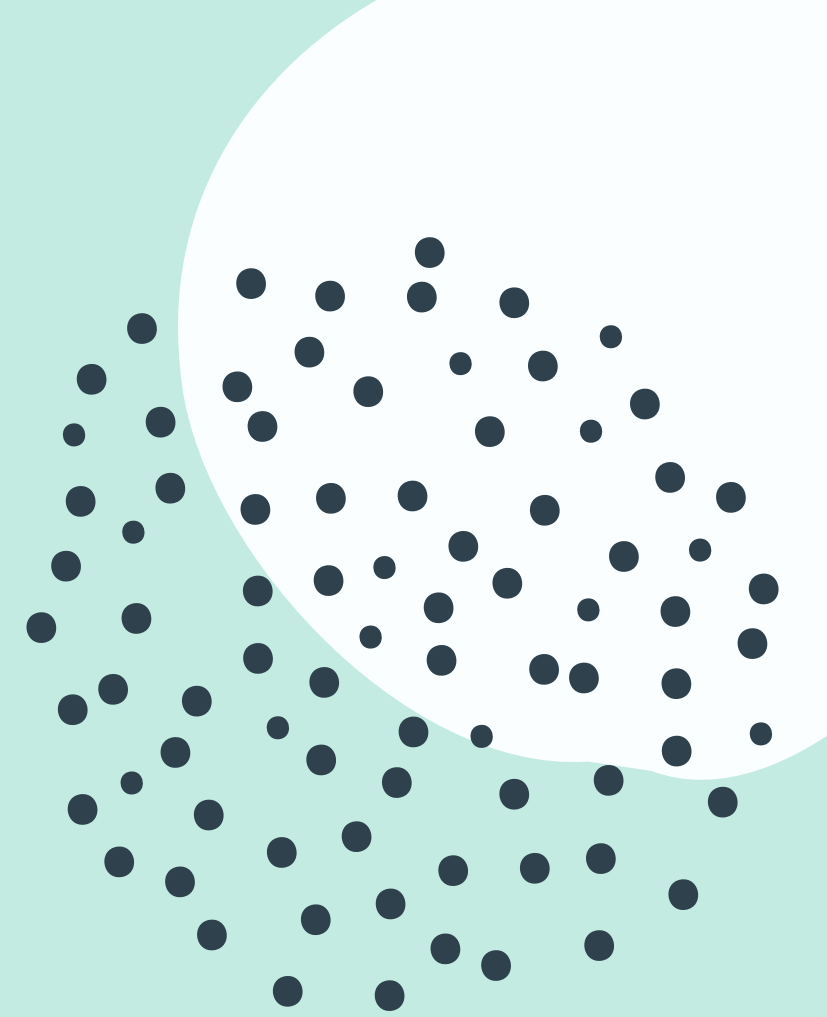
All students/members will be affiliated in one chapter.

MULTI TEACHER DEPARTMENT

Can affiliate as one big chapter with “co-advisors” or each teacher can affiliate their own chapter.

****Benefits of multiple chapters include: more leadership opportunities, more voting delegates, and more entries to competitive events****

Be Sure To Follow District Guidelines



DISCUSSION POINTS

Bylaws/constitution

Electing Local Officers



FIRST YEAR

- May need to solicit officers
- Get nominations from those interested in joining
- Consider an application

EXAMPLES OF OFFICES TO BEGIN WITH

- President
- VP of Programs/Projects
- Secretary/Treasurer

ADDITIONAL OFFICES

- VP of Comp. Events
- VP of Service Learning
- VP of Membership
- VP of Peer Involvement
- Parliamentarian



THIS IS YOUR CHAPTER

Run in class

Run Before or after

During Advisory

KEYS TO A SUCCESSFUL MEETING

Have an agenda

Set a goal of what you want to accomplish

RUNNING A MEETING

- **Have agenda**
- **Make it fun!**
- **Have food**
- **Make it matter**

T-SHIRTS & BRANDING GUIDELINES



- FCCLA and logos are trademarked
- **Branding Guidelines:** <https://fcclainc.org/communications/branding-guidelines>
- You must use the official FCCLA supplier except under certain circumstances – must get approval (link below)
- **Logo and Trademark Use Request:**
<https://fcclainc.org/communications/branding-guidelines/logo-and-trademark-use-request>



Fundraising

FINDING "LOOPHOLES"

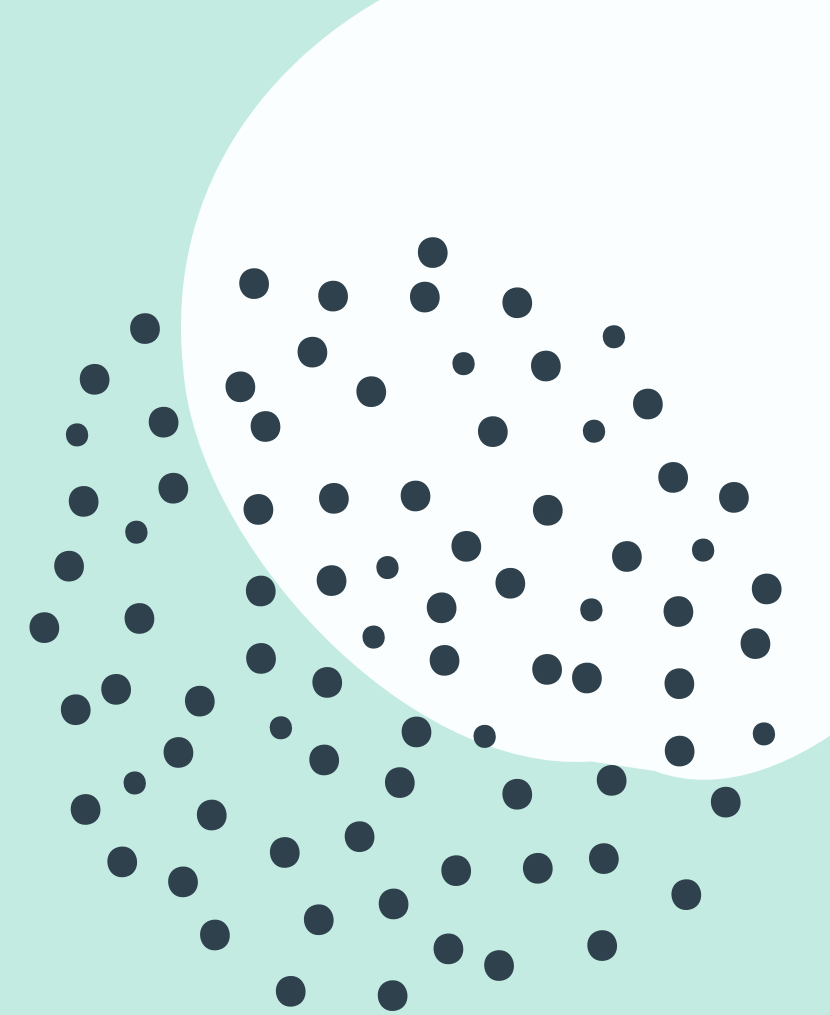
SELLING PRODUCTS

- CONCESSIONS
- BAKE SALE
- CATALOG FUNDRAISER

EVENT FUNDRAISERS

- DADDY DAUGHTER & MOTHER SON DANCES
- MOVIE NIGHTS
- DODGEBALL, KICKBALL, VOLLEYBALL TOURNAMENTS
- MEMBERSHIP TOOLKIT - SIGN UP FOR AN ACCOUNT

Affiliation



STATE MEMBERSHIP

**OK Affiliation SUBMISSION
deadline: OCTOBER 10 (if
participating in competitive
events or running an officer)
Payment must be RECIEVED at
National Headquarters by
OCTOBER 10**

**National Affiliation Deadline -
May 31st.**

National and State Dues: \$14 per member (\$9 national and \$5 state)

Middle School Affiliation - \$500 for all students PLUS \$24 per adviser

Unlimited Membership - \$1,090 - all students in FCS plus \$15 PER Adviser

Up to 25 Members - \$545 + \$15 per adviser

OKLAHOMA FCCLA



Oklahoma FCCLA
1500 W. 7th Avenue
Stillwater, OK 74074

**Oklahoma Conference & Competitive
Event Registration Payments**

NATIONAL FCCLA



National FCCLA
13241 Woodland Park Road, Suite 100
Herndon, VA 20171

**Affiliation Membership Dues
National Conference Registration Payments**

OKLAHOMA FCCLA

Website: www.oklahomafccla.org

OK FCCLA Competitive Event Information

Oklahoma FCCLA Conference Registration

Oklahoma General Information

**Oklahoma Conference & Competitive
Event Registration:**

<https://oklahomafccla.org/>

NATIONAL FCCLA

Website: www.fcclainc.org

- National Conference Information
- National General Information & Resources

**Membership Affiliation & National Conference
Registration (FCCLA Portal):**

<http://affiliation.registermychapter.com/fccla>

- National STAR Event Guidelines

LOG IN TO NATIONAL PORTAL

Make sure you have a Chapter ID. If you do not, you need to call Brittani Phillips, FCCLA State Adviser at 405-743-5467 or Ashli Hall, FCCLA Bookkeeper at 405-743-5472.

CHOOSE AFFILIATION PACKAGE

- Regular
- Up to 25 members
- Unlimited
- Middle Level

GRADUATE MEMBERS & BULK GRADE ROLL

When you first login, you will see a red button to graduate your seniors from the previous year. After you finish that you will need to bulk grade roll your students (another red button)

step-by-step
guide on
affiliation



How to Affiliate

ADDING CHAPTER MEMBERS

- Individual Members
- Bulk Member Entry
 - Upload or Copy & Paste
 - Google Form

ONCE ALL ARE ADDED

- Check for duplicate members
- Confirm consent
- Submit affiliation

IMPORTANT INFO

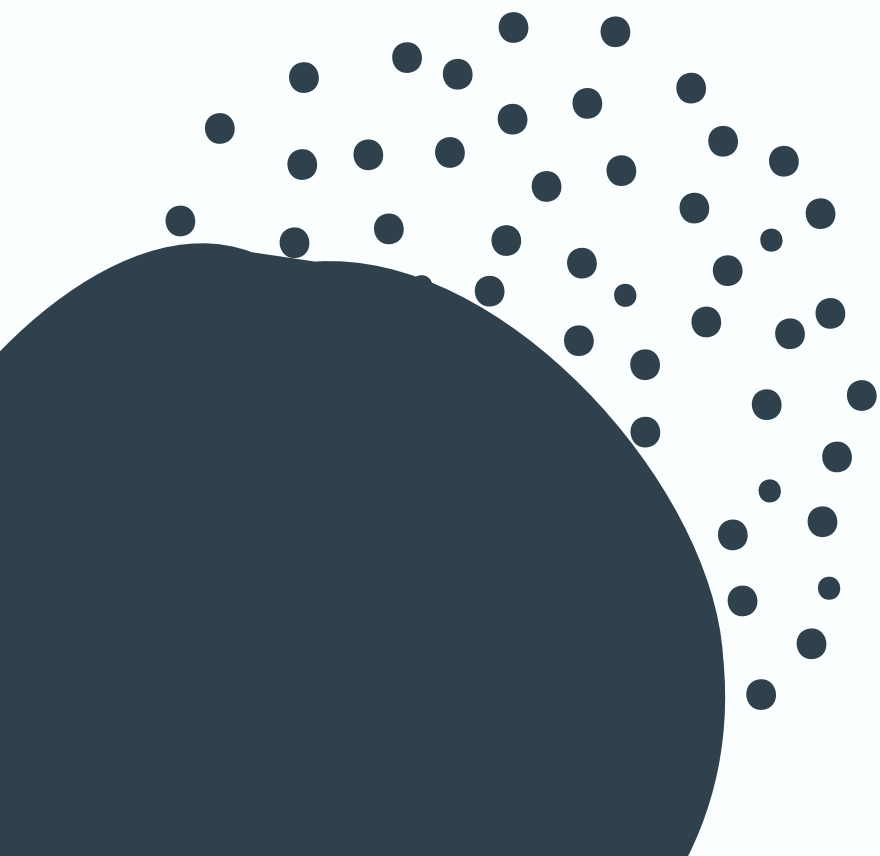
- Once you submit, you will be required to pay for everyone
- If you see a RED box, it is important
- Double check spelling & grade level



How to Affiliate

Sample google form to
complete bulk upload.

PLEASE make a copy of
this before using with
your students.





Where is it at
on the site?



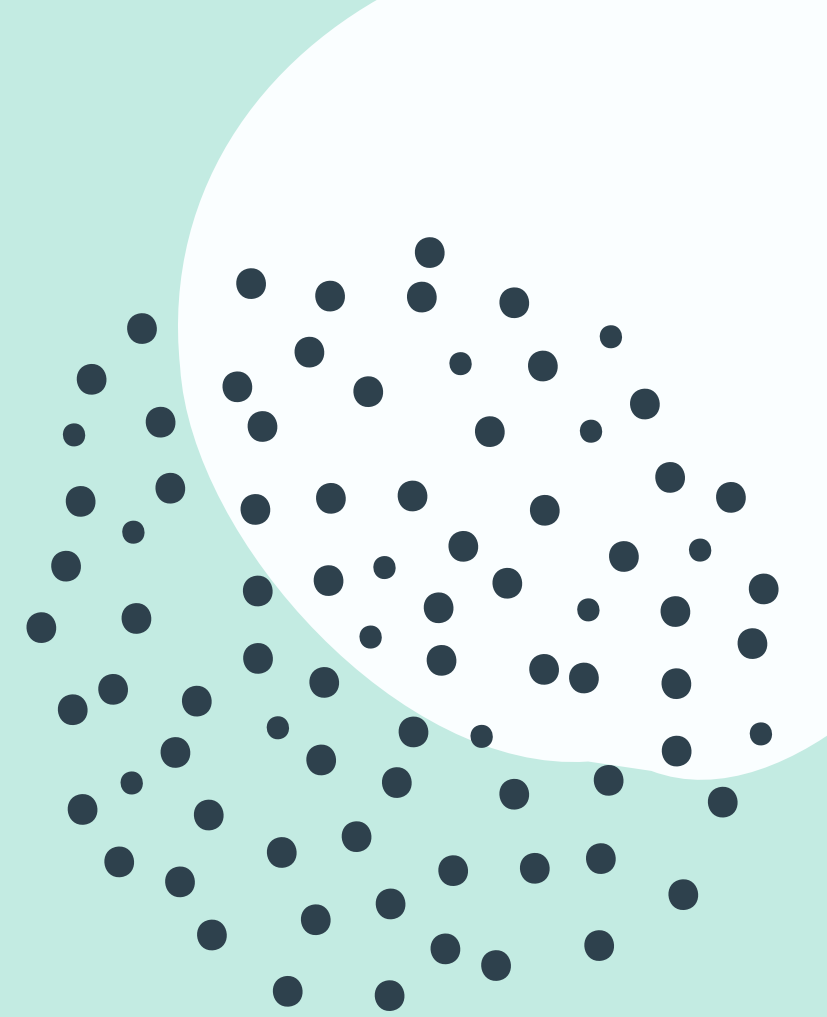
ATTEND - Conferences & Events

CONFERENCE REGISTRATION

TENTATIVE SCHEDULES

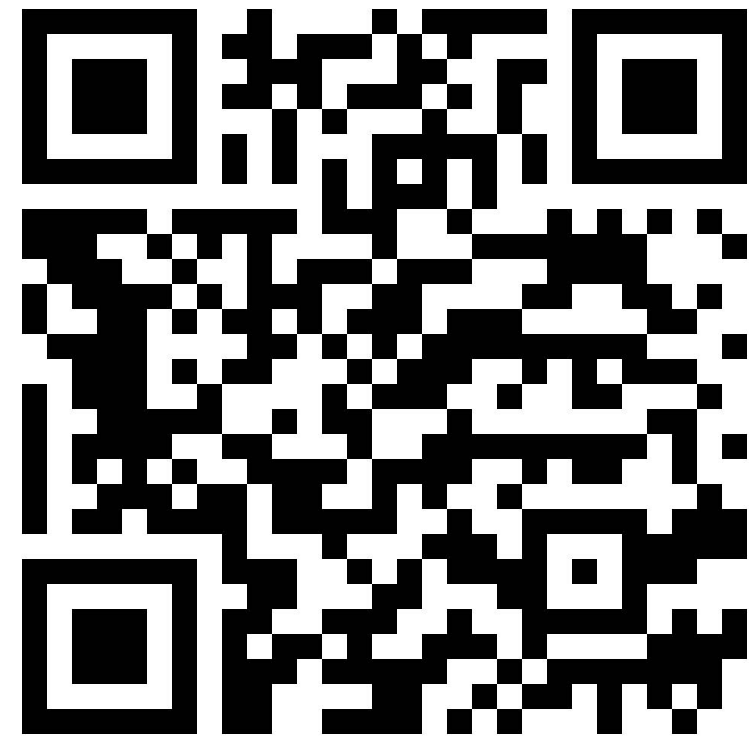


Conference Registration



**FOUND ON THE OKLAHOMA
FCCLA WEBSITE**

Check the deadline calendar for deadlines!
Payments & late fees



Scan to see
the Oklahoma
FCCLA Dress
Code

Official Dress

CONFERENCES

Red, Black or white polo and black pants

Button down shirts are fine

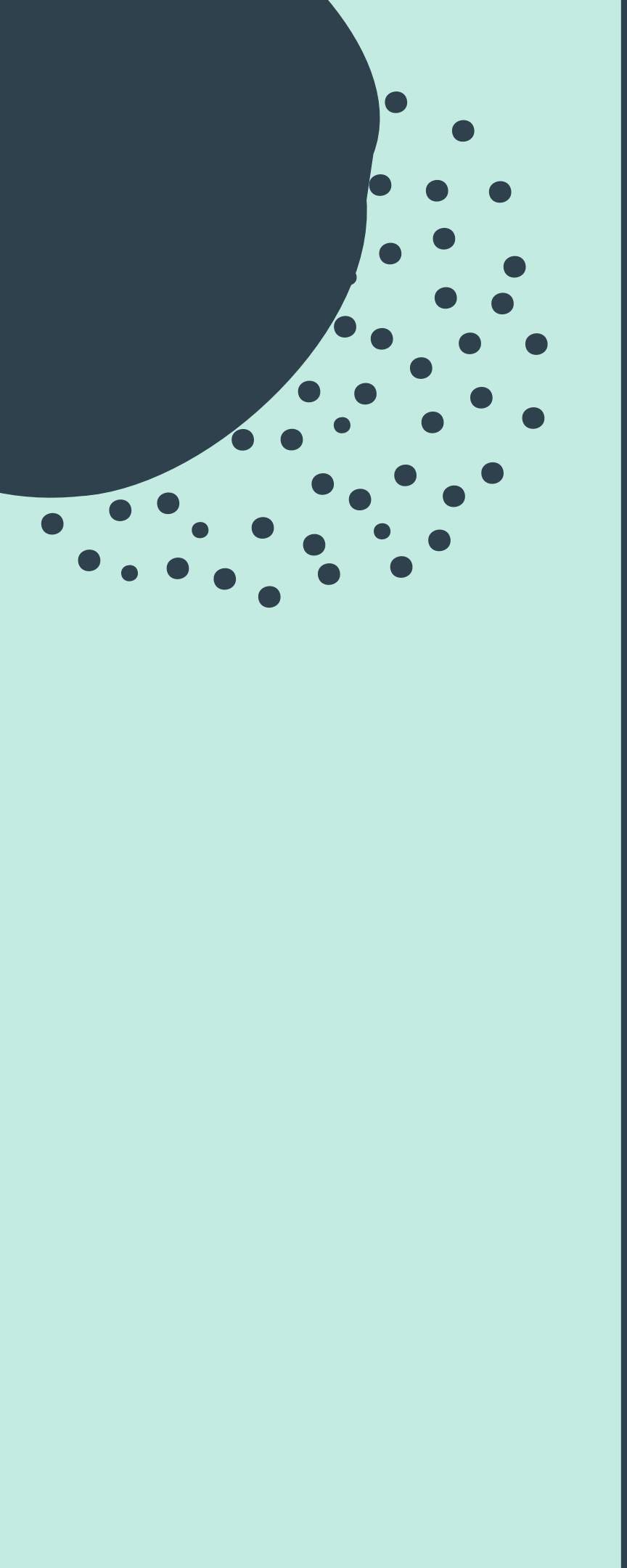
Black Sheath dress

STAR Events

Official dress of chef uniform

NATIONALS

You have to have a red coat



LEAD CONFERENCE OVERVIEW



General Info

General Agenda Overview:

- 8:30 - 9:00 | Registration / Pictures
- 9:00 - 10:00 | Opening Session
- 10:10 - 10:50 | Officer Track
Session 1
- 10:50 - 11:00 | Break
- 11:00 - 11:40 | Officer Track
Session 2
- 12:05 - 12:20 | Closing Session

Detailed Agendas by Location:

[North](#) | [Northeast](#) | [South](#) | [Southeast](#)

Dates & Locations

North Region

September 11- Stride Bank Center
301 S Independence St
Enid, OK 73701

Northeast Region

September 17 - Glenpool Conf. Center
12205 S Yukon Ave
Glenpool, OK 74033

South Region

September 12 - Simmons Center
800 Chisholm Trail Pkwy
Duncan, OK 73533

Southeast Region

September 18 - Life Church
1300 S George Nigh Expy
McAlester, OK 74501

Price

\$15 per student - chapters may bring up to 7 students. District Officers are not charged and are not included in the 7 student limit.

*** Advisers Have No Fee to Attend ***

**REGISTRATION DEADLINE August 30,
2024 REGISTRATION FEE IS NON-
REFUNDABLE AFTER DEADLINE PASSES**

Please make payment to:

Oklahoma FCCLA
Attn: Ashli Hall, FCCLA Bookkeeper
1500 W. 7th Street
Stillwater, OK 74074



DISTRICT LEADERSHP CONFERENCE OVERVIEW

- **Held in your district**
- **Great recruitment tool**
- **District Counselor Plans**



STATE CONVENTION OVERVIEW

[https://www.youtube.com/
watch?v=6Q2RXSYYSQY](https://www.youtube.com/watch?v=6Q2RXSYYSQY)

- **Largest State Event**
- **Chapter and Member Recognition**
- **Leadership Speakers**
- **FUN!**
- **April 2, 2026**

OTHER CONFERENCES



Riversports Day – September
Take AIM – October
Say Yes to FCS Day –
October
Get SET – December
FCCLA Night With the
Thunder

LEAD



- Great opportunity for students AND advisors
- Chapters can run THREE district officers per chapter
 - Attend June District Officer Training to plan year and conferences
- Required to attend Lead Conference, District Leadership Conference, District STAR Events, Region STAR Events, and State Convention
 - 10 State Officers
 - 100 District Officers
 - 10 National Officers



Where is it
on the site?



ENGAGE

SERVICE LEARNING

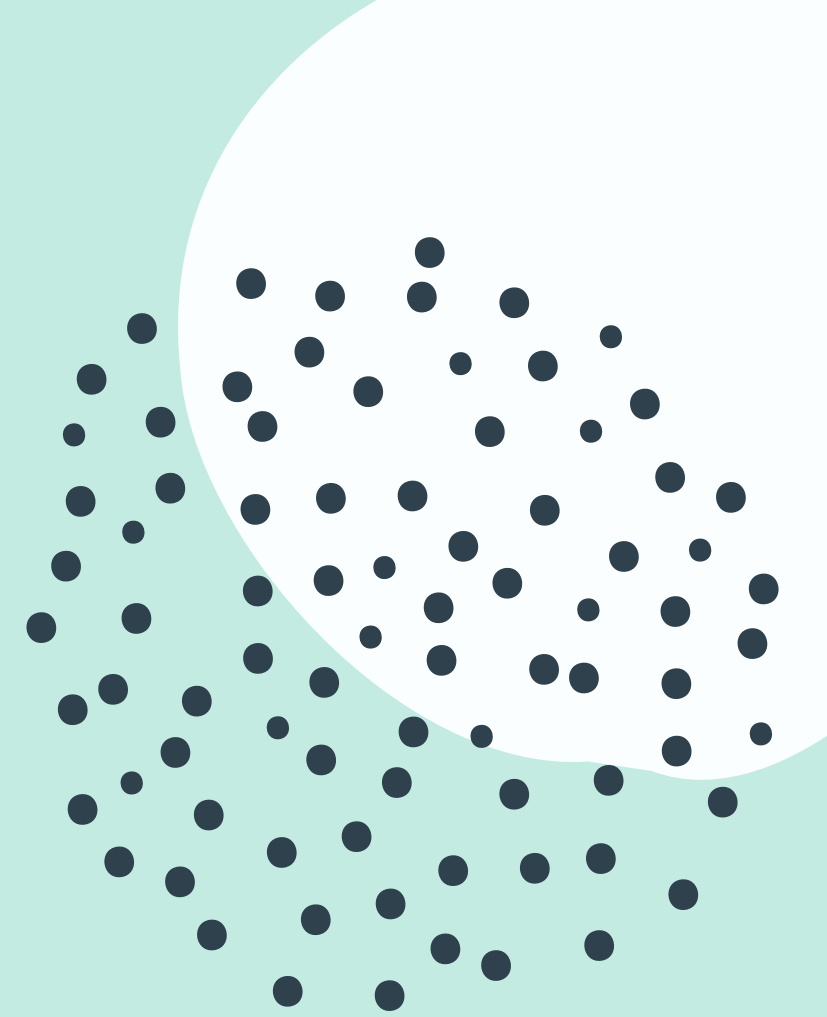
CHAPTER OF EXCELLENCE



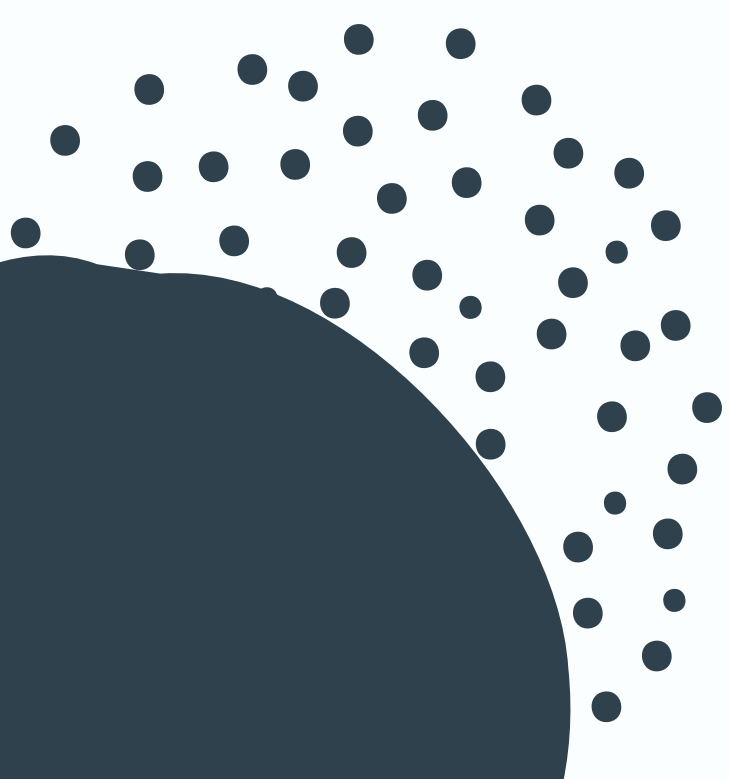
National Programs

FCCLA OFFERS EIGHT PEER-TO-PEER EDUCATIONAL PROGRAMS TO HELP STUDENTS DEVELOP REAL-WORLD SKILLS FOR LIFE WITHIN FAMILY AND CONSUMER SCIENCES (FCS) EDUCATION. EACH NATIONAL PROGRAM IS DESIGNED TO BE INTEGRATED INTO THE FCS CLASSROOM TO HELP REINFORCE LESSONS WITH OPPORTUNITIES FOR HANDS-ON PRACTICE.

1. Career Connection
2. Community Service
3. FACTS (Families Acting For Community Traffic Safety)
4. Families First
5. Financial Fitness
6. Power of One
7. Stand Up
8. Student Body



EACH NATIONAL PROGRAM COMES WITH A WEALTH OF ENGAGING RESOURCES, INCLUDING LESSON PLANS, ACTIVITIES, AND PROJECT IDEAS CAREFULLY CURATED FOR SEAMLESS INTEGRATION INTO FCS CLASSROOMS. EMPOWER YOUR STUDENTS WITH PRACTICAL KNOWLEDGE AND ESSENTIAL LIFE SKILLS BY INCORPORATING FCCLA'S NATIONAL PROGRAM GUIDES.



These resources can be purchased through the FCCLA portal. If you purchased the “Up to 25” or “Unlimited” members packages, you have a complimentary national program to redeem! Instructions for this can be found at fcclainc.org/engage/national-programs.

Service Learning



Citizens
Caring for
Children





Where is it at
on the site?

Competitive Events

STAR VS. OKLAHOMA EVENTS

SPOTLIGHT ON PROJECTS

STAR EVENTS

** Baking & Pastry
** Culinary Arts
Career Investigation
Chapter Service Project (Display in 2025-2026)
Early Childhood Education
Entrepreneurship
Event Management
Fashion Construction
Fashion Design
Focus on Children
Food Innovations
Hospitality, Tourism, & Recreation
Interior Design
Interpersonal Communications
Job Interview
Leadership
National Programs in Action
Nutrition & Wellness (offered in 2025-2026)
Parliamentary Procedure
Personal Finance
Professional Presentation
Promote & Publicize FCCLA
Public Policy Advocate
Repurpose & Redesign
Say Yes to FCS Education
Sports Nutrition (offered in
2026-2027)
Sustainability Challenge
Teach or Train
Teaching Strategies

STAR EVENTS

STAR Events are competitive events in which members are recognized for proficiency and achievement in chapter and individual projects, leadership skills, and career preparation, STAR Events offer individual skill development and application of learning throughout the following activities - Cooperative, Individualized, Competitive

OKLAHOMA EVENTS

OKLAHOMA Events are competitive events exclusively for Oklahoma members. Winners can only advance to the state level; winners do not advance to national competition.

Oklahoma Events

Cake Decorating
Children's Literature
Creed Speaking &
Interpretation
Culinary Grill
Meat Identification
New Member Facts
WR - Child Care Teacher
Aide
WR - Interview Skills
WR - Table Setting



FCCLA Planning Process Summary Page Template



(This template may be modified, but all headings must be used in the correct order. The FCCLA logo, STAR Events logo, and Planning Process graphics are encouraged but not required.)

IDENTIFY CONCERNS



SET A GOAL



FORM A PLAN (WHO, WHAT, WHEN, WHERE, HOW, COST, RESOURCES, AND EVALUATION)



ACT



FOLLOW UP



FCCLA Planning Process

THE BUILDING BLOCK FOR ALL
PROJECTS

THE TEMPLATE CAN BE FOUND
IN THE NATIONAL ADVISER
PORTAL

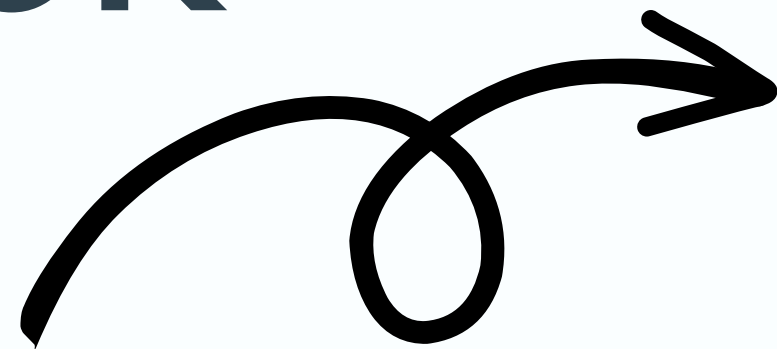
Other Competitions

- FCCLA/LifeSmarts Knowledge Bowl
- Online STAR Events – entries due in February
- Skill Demonstration Events – NLC
- Knowledge Tests – NLC
- Something for everyone! Please attend STAR Bootcamp in October for more information

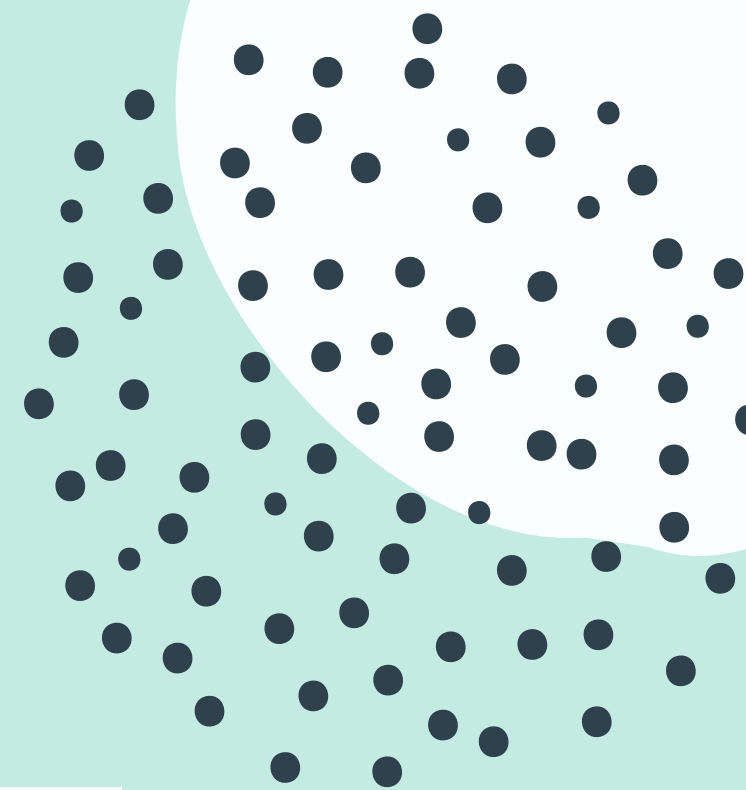
FCS Research Challenge

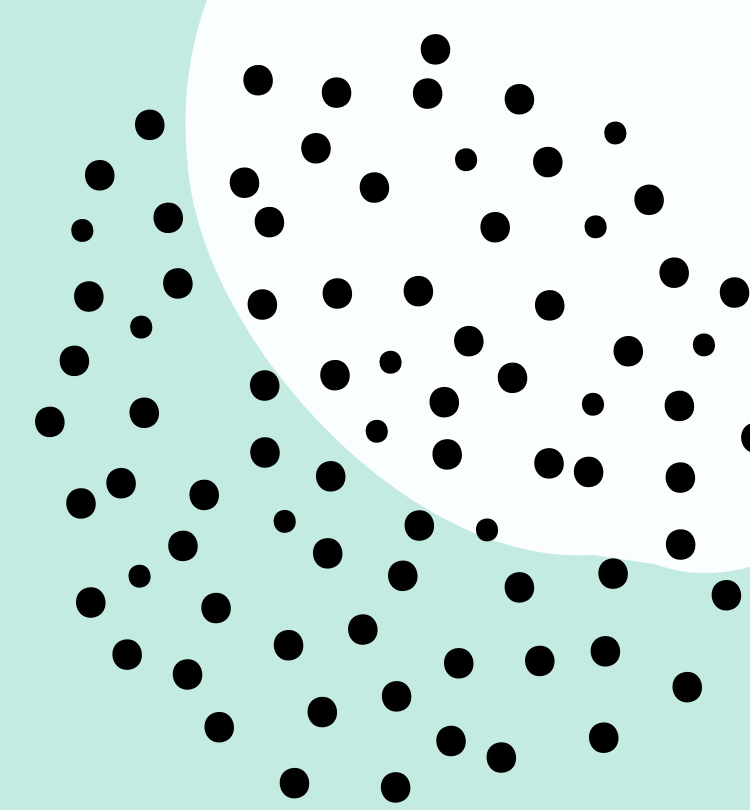
- Science fair type project
- Held at FCS Day at the Capitol

OKLAHOMA Family and Consumer Sciences FACEBOOK GROUP



Join NOW!





Thank you!

How can we improve?

Please fill out the survey linked to the QR code and let us know how we did.

