

A yellow pencil with a black eraser and a black band, angled diagonally from the top left towards the center.

Welcome to

# Region Meetings

North

\*Please sit with your districts\*



Teacher?  
I prefer  
the term  
Educational  
Rockstar



# Program Specialist

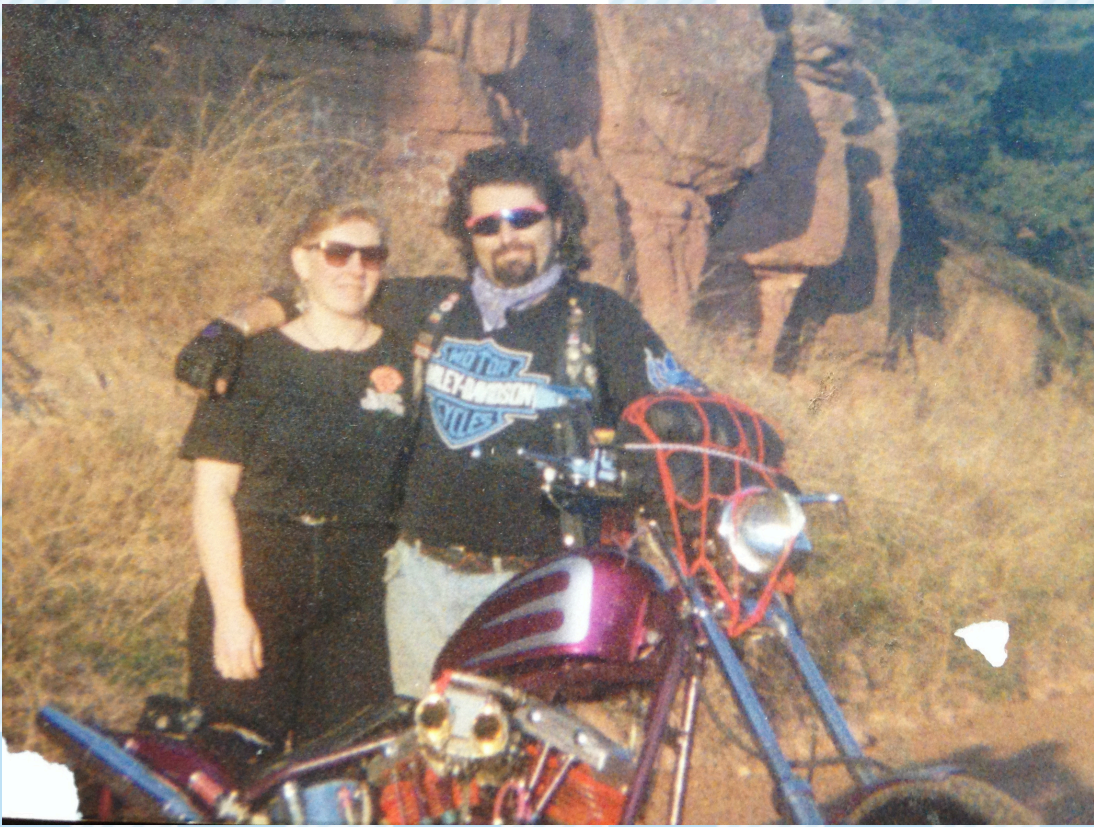
## Contact Info:

- [Teena.Friend@careertech.ok.gov](mailto:Teena.Friend@careertech.ok.gov)
- 405-743-5468

## Personal Info:

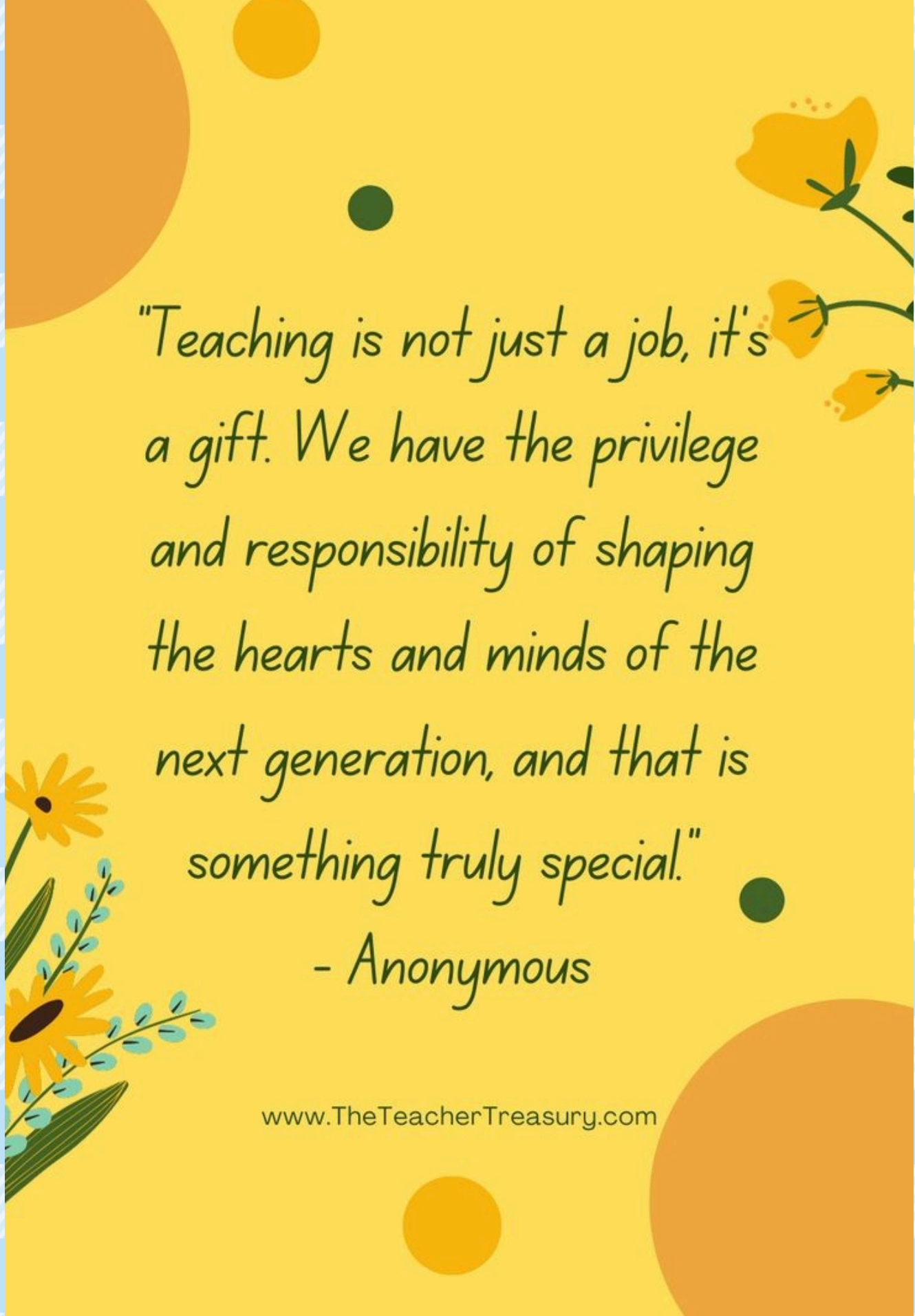
- From Colby, KS
- OSU Alum, 1991, Home Economics Ed
- Taught FCS at Riley County HS, Riley KS
- ODCTE Assessment Specialist
- FCS Program Specialist





## Our Family





*"Teaching is not just a job, it's  
a gift. We have the privilege  
and responsibility of shaping  
the hearts and minds of the  
next generation, and that is  
something truly special."*

*- Anonymous*

[www.TheTeacherTreasury.com](http://www.TheTeacherTreasury.com)

# ~PSA~

This entire powerpoint will be posted to ctyou after ok summit. You can review it using this link:

[Link to get you to Region Specific Resources](#)

==Welcome==

NEW TEACHERS!

PLEASE STAND AS YOUR NAME IS CALLED AND REMAIN STANDING UNTIL THE THE END

N1



KIMBERLY LONG: OKEENE



TONY LOUTHAN: GEARY



RACHEL TAYLOR: GUYMON

KENYA TEKELL: EDMOND CIMARRON MS



KAT RAHLFS: EDMOND SEQUOYAH MS



AMY ARBUCKLE: EDMOND SANTA FE HS



HEATHER GRAVES: WESTERN HEIGHTS MS

N3



AMY HARRELL: BETHANY SCHOOLS

HANNAH DAY: PIONEER TECH ECE/TEACHER PREP



N4

KENZLEE CAMP: STILLWATER HS



CORY VINELD: PERRY HS



ELIZABETH WITHROW: WELLSTON



JAYMI BOWMAN: COYLE

N5



RICHARD STANTON: CLEVELAND HS

# JOB OPENINGS!

There are still a few job openings across the state. If you know someone who would like to teach FCS, send them to our job listings on ctYOU under the FCS/Bulletin Board/FCS Job Openings!

# FCS PROGRAM FUNDING

412 MONEY

\$

8000

FULL TIME  
PROGRAMS

SALARY STIPEND

\$

2200

(411 MONEY)

# USING 412 MONEY

## Classroom Equipment

- Appliances
- Sewing Machines
- Laptops/Tablets

## Instructional Supplies

- Curriculum/Textbooks
- Simulations/Real Care
- Food Lab Ingredients

## Professional Development

- Chapter Adviser Summit
- Vision Conference
- May Workshops



# ADDITIONAL EXPENDITURES FY26

\$900 FCCLA AFFILIATION PER CHAPTER



\$300 OFFICIAL DRESS/CONFERENCE  
DRESS/CHEF ATTIRE



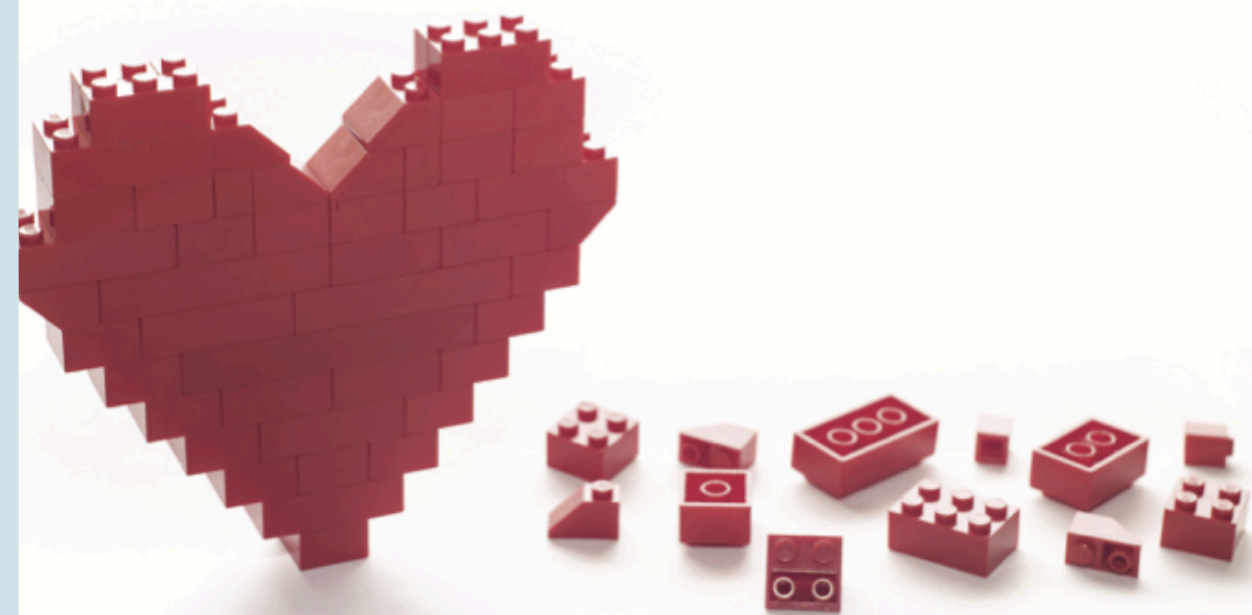
# Let's BBBR

BUILDING BLOCKS TO  
BETTER  
RELATIONSHIPS



**The Dibble Institute**  
Resources for Teaching Relationship Skills

**BUILDING  
BLOCKS  
FOR BETTER  
RELATIONSHIPS**



THE DIBBLE INSTITUTE

# BBBR CURRICULUM

Oklahoma Family and Consumer Sciences is once again partnering with The Dibble Institute through a contract awarded by the Oklahoma Department of Human Services to offer the Building Blocks for Better Relationships (BBBR) program. This curriculum, specifically designed for Oklahoma FCS classrooms,

## 12 LESSONS

- Build Resiliency
- Learn to self-soothe and regulate emotions
- Develop empathy
- Develop Stronger Communication Skills
- Learn problem solving
- Support healthy, lasting relationships



# It's Free

## WHAT'S INCLUDED?

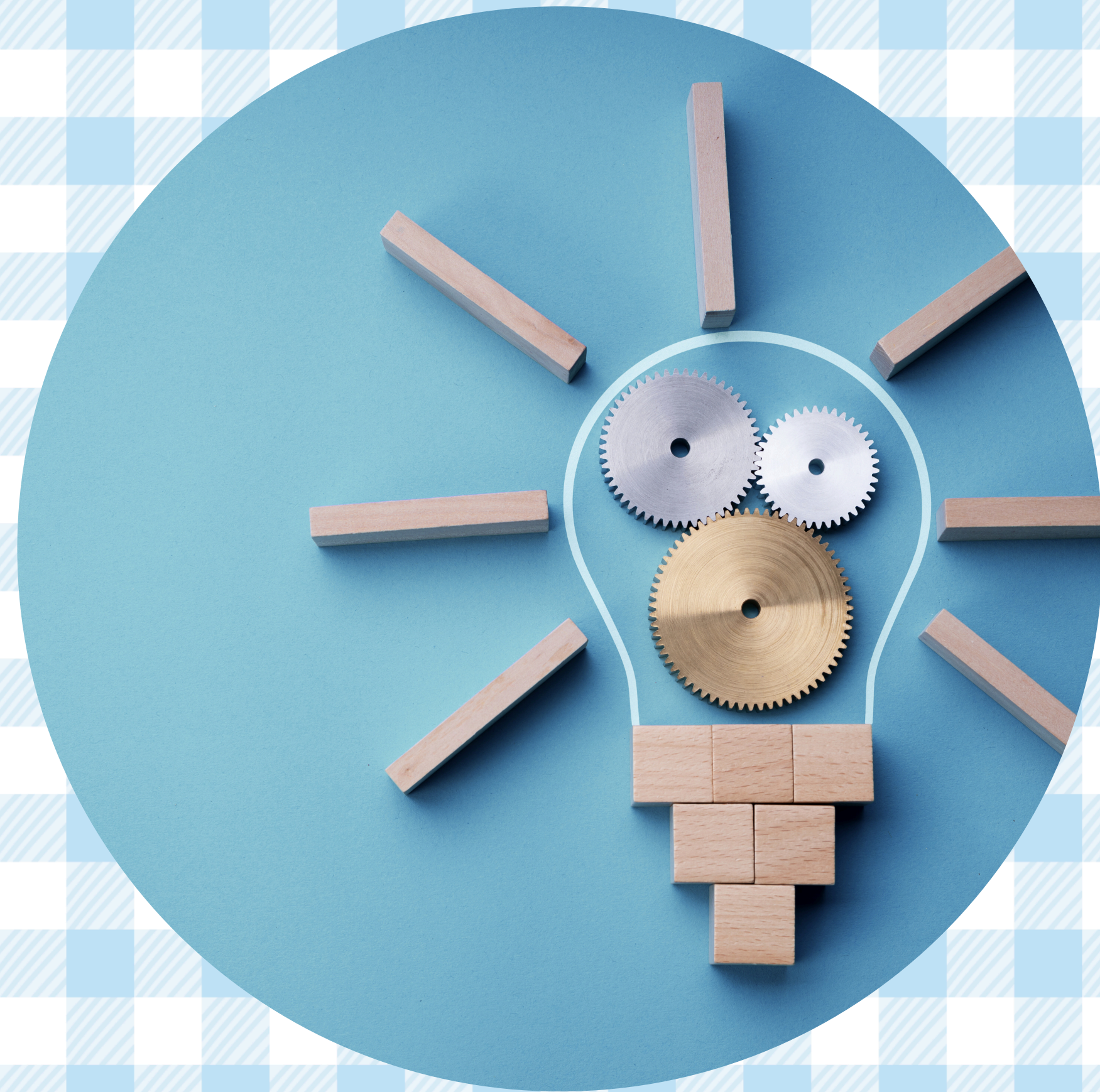
- **1 full day of curriculum training**
  - **Hotel, Mileage, and per diem paid**
- **1 printed teacher's edition**
- **Student workbooks**
- **Digital Access**



**And  
\$\$\$\$**

**YOU GET..**

- **\$200 Stipend for attending training**  
**OR**
- **\$100 Stipend for 2<sup>nd</sup> year BBR teachers**
- **\$150 Stipend for submitting teacher and student pre-tests**
- **\$150 Stipend for submitting student post-tests**
- **\$100 Stipend for teaching 3+ courses a day**



# ELIGIBILITY

- Any FCS course 7<sup>th</sup> - 12<sup>th</sup> grades
- Can be taught in multiple classes

# REQUIREMENTS

- Submit application
- Attend training Aug. 27 in Stillwater
  - turn in reimbursement form
- Teacher and Student pre-tests by due date
  - Fall- Sept. 19, 2025
  - Spring- Feb. 20, 2026
- Teach 12 lessons to a minimum of 60 total students
- Post-tests of at least 90% of students that were pre-tested by due date
  - Fall- Dec. 19, 2025
  - Spring- May 20, 2026
- Submit feedback

## BUILDING BLOCKS FOR BETTER RELATIONSHIPS

BBBR Teacher Applications



# CTYOU HELP

[www.ctYOU.org](http://www.ctYOU.org)

- **Create an account (tip use a personal email)**
- **It is okay if you are viewing items as a guest... you will have the password to anything that is locked.**
- **Locate helpful resources like:**
  - **Region/District info**
  - **Course Resources**
  - **FCCLA Information**
  - **Safety Tests/FCS Directory (Fc\$2025)**
  - **5 Year Comprehensive Evaluation Folders for your program**

# FCS DIRECTORY

located on ctYOU

Will be under “FCS Directory &  
Region Resources”

Password Protected: Fc\$2025

(once the new directory is posted you may need to clear  
browser cookies to see it instead of the old directory)

# GRADUATION REQUIREMENT REFORM



**OKLAHOMA**  
**CareerTech**

---

**FCS**

Family and Consumer Sciences

For more information contact  
Holly.

# CAREER INTEGRATION IN THE CLASSROOM

- Utilize advisory board members/community guests speakers in classes and FCCLA meetings
- OK Career Guide
  - Training
  - OK Career Guide Curriculum
  - Connect 2 Business
- These integrations can be used to help students with their Individual Career Plan (ICAP)

# OKLAHOMA BEEF COUNCIL



- More information will be available in the FCS/FCCLA Weekly Newsletter
- Grants available for up to \$250 reimbursement
- Application deadline is Sept. 30<sup>th</sup>
- Questions can be directed to Sammy Head at [SHead@oklabeef.org](mailto:SHead@oklabeef.org)

# CERTIFICATION TESTS



Students completing FCS Basics & Human Growth & Development should be taking the ODCTE 7101 Entry Level Child Care Training (ELCCT) certification test. Those who pass can work at daycare centers.

**\*\*\*There is still a large push for certification tests for our students. PLEASE watch the newsletter for future updates on certification tests to give your students. \*\*\***

# ASSESSMENT PRODUCTS AND SERVICES



**OKLAHOMA  
CareerTech**

**CTTC** CareerTech Testing Center

## »» WHO WE ARE

CareerTech Testing Center works directly with instructors, industry representatives, and credentialing entities to identify and develop more than 150 certification assessments and assessment preparation materials that align with recognized industry standards.

Our partnerships with industry leaders ensure our assessments focus on required and/or valued credentials. They are given in Oklahoma through our technology centers, comprehensive schools, and in our skills center programs within the prison system. We also work with other states that use our assessments for state-mandated testing.

We utilize our technology center network of more than 50 locations to provide test sites to our 15 partnering agencies/divisions. We host their certification/licensure exams, and our test site personnel provide a secure, proctored environment for testing. They also validate the documentation required by each agency to test.

CTTC provides a unique opportunity to entities needing a secure testing platform. We provide hosting solutions for your content and assessments, and offer various delivery options to meet your needs.

### **WORKKEYS®**

» [www.okworkkeys.org](http://www.okworkkeys.org)

### **IN-STATE CUSTOMERS**

» [www.okcttc.com](http://www.okcttc.com)

### **HEALTH AND PROFESSIONAL CERTIFICATIONS**

» [www.okhcp.com](http://www.okhcp.com)

### **OUT-OF-STATE CUSTOMERS**

» [www.careertechtesting.com](http://www.careertechtesting.com)



**OKLAHOMA  
CareerTech**

**CTTC** CareerTech Testing Center

## FCS OCCUPATIONS

» Family and Consumer Sciences Education

### **COMPETENCY ASSESSMENTS CREATED BY CAREERTECH TESTING CENTER**

- |  |   |
|--|---|
| <b>0057</b> » Financial Literacy                     | <b>7105</b> » Child Care Director   |
| <b>0454</b> » Workplace Readiness Skills             | <b>7108</b> » Teacher Assistant   |
| <b>0455</b> » Job Seeking and Retention Skills       | <b>7151</b> » Early Education Pathway to National Credential (Oklahoma Regents for Higher Ed) |
| <b>0901</b> » Fundamentals of Technology             | <b>7152</b> » Director's Pathway to National Credential (Oklahoma Regents for Higher Ed)      |
| <b>0911</b> » Entrepreneur                           | <b>7308</b> » Basic Culinary Arts   |
| <b>7007</b> » FCS Basics                             | <b>7309</b> » Advanced Culinary   |
| <b>7101</b> » Entry-Level Child-Care Training        | <b>7451</b> » Introduction to Hospitality and Tourism   |
| <b>7103</b> » Master Teacher                         |   |
| <b>7104</b> » Infant and Toddler Child Care Provider |   |

### **WHAT WE DO**

CTTC provides assessments and test preparation materials for approximately 175 courses/occupations. Specifically, CTTC:

- » Works with industry to develop state and national standards for emerging occupations.
- » Develops study guides that include test plans, sample questions, curriculum/resource crosswalks, etc.
- » Works with subject-matter experts, state agencies, and industry organizations to develop and validate occupational competencies and provide certification/licensure examinations.
- » Coordinates delivery of assessments through hundreds of test sites throughout Oklahoma and the United States.
- » Provides analytical data that aides in instructional planning, program improvement, and assessing occupational readiness.

### **SERVICES**

- » Student remediation
- » Program remediation
- » Free study guides
- » Free digital badges



# PROGRAM REPORTING



Follow-Up  
Reports Open

**Oct. 1**

CESI Reports initial  
submission  
Submit DSE Judges

**Oct. 31**

CESI Reports  
additional  
students added

**Jan. 31**

**Sept. 30**

Salary &  
Teaching Report

**Nov. 30**

Follow up  
Reports Due

**May 31**

CESI Final Reports Due  
5 yr Folders Updated  
Advisory Committee  
Report  
412/314 Reports

# SALARY & TEACHING REPORT: DUE SEPT 30TH

- Add your entire school day! Don't forget your plan period and your lunch!
- If you have an 'Other' such as advisory or study hall please note it in the comments.
  - DO NOT place students in an "OTHER" course; unless you are teaching a FCS-related course. If student numbers are listed in other, an explanation is needed describing what material is being taught.
- The 'Contact Info' section is **NOT YOU**. Use someone who can answer questions about your contract.
- In the salary section, if you put any amount in the other box you must put a comment itemizing that amount.
  - Example: \$1500 should be broken down to \$1000 Student Council, \$500 Sr. Class Sponsor.
  - **DO NOT INCLUDE THE FCS STIPEND \$2200.**
- Break down of what goes in each category of the Salary Information:
  - **Base Salary:** your base salary plus anything else FCS related i.e.: FCCLA stipend from school not the \$2200
  - **Health:** any type of Insurance i.e.: health, life, etc. Itemize in the comment section what amount is paid for each different insurance.
  - **Retirement:** all school-paid retirements
  - **Other:** extra duty pay other than FCCLA
- In the acknowledgment section note which pathways you teach.



**RCCTA** Resource Center for  
CareerTech Advancement

## Labor Market Information from the Resource Center for CareerTech Advancement

### Free, Customized Economic and Workforce Data

The Resource Center for CareerTech Advancement can provide reports using economic, workforce, demographic, and training data from Lightcast, which compiles information from the Bureau of Labor Statistics, the Bureau of Economic Analysis, the National Center for Education Statistics, O\*Net™, the Social Security Administration, and other sources.

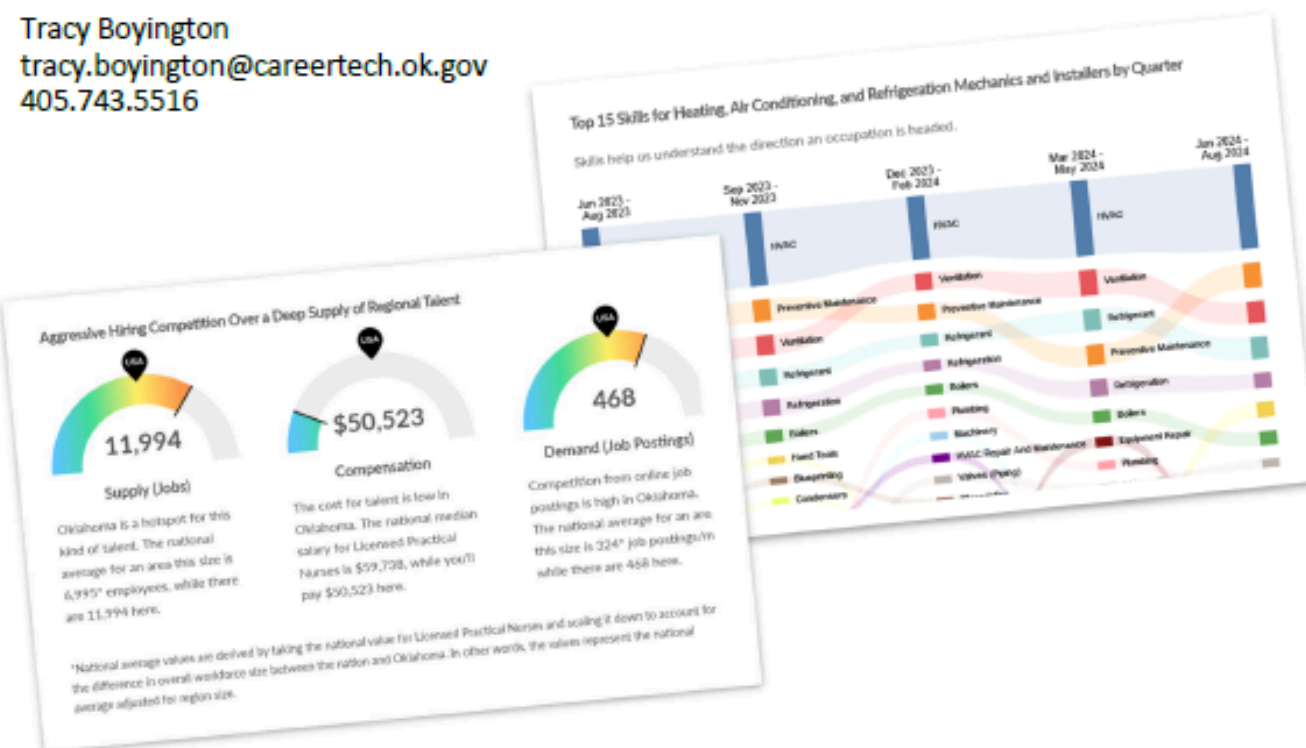
We can create reports on occupations, industries, and training programs. Reports can be run for the entire state or by region. A region can be a county, a Metropolitan Statistical Area (MSA), a technology center district, a group of counties, a zip code, or group of zip codes. We can also create regions by radius or by driving time from a central point (for example, a two-hour drive from your technology center).

Reports are available as PDF files or Excel files, and many include graphics (charts and tables) that can be used in your own document or presentation.

To learn more, and to view sample reports, visit our website:  
[okcareertech.org/educators/resource-center/economic-workforce-data](http://okcareertech.org/educators/resource-center/economic-workforce-data)

To request a report, or for more information, contact:

Tracy Boyington  
[tracy.boyington@careertech.ok.gov](mailto:tracy.boyington@careertech.ok.gov)  
405.743.5516



### Some of our most frequently requested reports include...

#### Economy Overview

An overview of a regional economy with data related to jobs, demographics, and social metrics.

#### Population Demographics Report

An overview of demographics and population in a region with data related to age cohort, gender, and race/ethnicity.

#### Community Indicators

A report containing social, demographic, housing, and economic data straight from the Census' 5-year ACS data.

#### Industry Snapshot

An overview of one industry with data related to jobs, growth, earnings, demographics, and more.

#### Industry Table

A table of one or more industries in a region with data related to jobs, growth, earnings, completions, demographics, and more.

#### Occupation Snapshot

An overview of one occupation with data related to jobs, earnings, programs, demographics, and more.

#### Occupation Table

A table displaying one or more occupations in a region with data related to jobs, growth, earnings, completions, demographics, and more.

#### Highest Ranked Occupations

An overview of top occupations in a region according to employment, earnings, job growth or decline, and more.

#### Program Snapshot

An overview of the demand for a training program with data related to competitive landscape, job postings, skills, target occupations, and more.

#### Program Table

A table of the academic programs in a region with data related to completions, openings, earnings, jobs, and more.

#### Job Posting Analytics

An overview of job posting activity over time with data related to intensity, regions, occupations, job titles and skills/certifications required.

#### Businesses Table

A list of businesses in a region with information about business size, years in business, small business status, minority/female-owned status, and more.

Not sure which report you need? Just let us know what information you're looking for and we'll figure out which report works best for you!

For these reports and many more, visit [okcareertech.org/educators/resource-center](http://okcareertech.org/educators/resource-center)



# USING LABOR MARKET INFORMATION TO DESIGN JOB-DRIVEN CTE TRAINING

## Step 1: Identify Relevant Employer Trends

- Why?** Use traditional labor market information (LMI) data to assess historic trends, the current state and future of specific occupations.
- What?** Access data through local, state, and federal government agencies.
- How?** Track key indicators by classification, industry, and growth. Assess against a comparison group.

## Step 2: Identify Real-Time Labor Market Trends

- Why?** Use real-time data to get up-to-the-minute information about occupations of interest.
- Where?** Data is available through online companies that charge licensing fees to access it.
- How?** Review job posting trends and their education/experience requirements. Compare them against traditional LMI.

## Step 3: Understand Wage Variation

- Why?** To pursue occupations that guide participants along a career pathway that offers increasing wage opportunities.
- What?** Public and commercial data sources that include median and average wage levels.
- How?** Review median wages by occupation, location quotient, and wage ranges.

## Step 4: Measure Local Training Capacity

- Why?** To ensure training programs are meeting workforce needs and not oversaturating the labor market.
- What?** Access data on program completion through federal government agencies.
- How?** Track the number of local program graduates and their levels of education.

## Step 5: Work with Employers to Verify Demand

- Why?** To verify individual employer needs, expectations, and compensation packages.
- Where?** Find employers through local resources (i.e., chambers of commerce or workforce investment boards).
- How?** Invite employers to advisory committees, focus groups, or request regular feedback on training programs. Discuss employer-specific skill needs and identify employer challenges.

## Step 6: Use Evidence to Make Program Decisions

- How?** Synthesize and analyze traditional and real-time LMI, wage data, and employer feedback. Use results to adapt training offerings, modify participant recruitment materials, and build employer and other community partnerships.

## Step 7: Measure Results

- Why?** To assess the efficacy of data-driven approaches and ensure measures of success for the program and participants.
- How?** Assess process and outcome measures and track and survey program graduates as they enter the workforce.

## Step 8: Make the Process Systematic

- Why?** To monitor employment shifts in a changing employment environment.
- What?** To make data a regular component of decision-making and evaluation processes.
- How?** Create logic models, keep leaders informed, dedicate staff time, and leverage partnerships.

**Source:** Adapted from *Using Labor Market Information to Design Job-Driven Training Programs*, U.S. Department of Health & Human Services, 2015. Accessed July 16, 2019 at <https://www.acf.hhs.gov/ofa/resource/using-labor-market-information>.

The Resource Center for CareerTech Advancement can provide reports using economic, workforce, demographic, and training data from Lightcase, which compiles information from the Bureau of Labor Statistics, the Bureau of Economic Analysis, the National Center for Education Statistics, O\*Net™, the Social Security Administration, and other sources.

For more information, contact:

Tracy Boyington  
[tracy.boyington@careertech.ok.gov](mailto:tracy.boyington@careertech.ok.gov)  
405.743.5516




RCCTA

Resource Center for  
CareerTech Advancement

<https://www.okcareertech.org/educators/resource-center>

**OKLAHOMA**  
**CareerTech**



# PROGRAM VISITS AND EVALUATIONS

# Technology Center Accreditations

## North Region

High Plains Tech      Oct 7-9

Metro Tech      Oct 21-23

Pioneer Tech      Oct 28-30

# COMPREHENSIVE PROGRAM EVALS (K12)

## OKFCS North Program Evaluations

### North 1

- Guymon
- Laverne
- Leedey
- Mooreland
- Sharon-Mutual
- Thomas-Fay-Custer
- Vici
- Woodward (2)

### North 2

- El Reno
- Piedmont (2)

### North 3

- Yukon (3)

### North 4

- Luther

### North 5

- Bristow
- Cleveland



# NEW TEACHER VISITS

N1: Geary, Guymon, Okeene

N3: Bethany, Edmond Cimarron, Edmond Santa Fe, Edmond Sequoyah, Western Heights HS, Western Heights HS

N4: Coyle, Perry, PTC, Stillwater

N5: Cleveland

CHECK YOUR EMAIL FOR DATE CONFIRMATION

# 2ND YEAR AND MORE TEACHER VISITS

*As needed, I may call and/or pop in!*

# Teaching to Teach Apprenticeship Program



OKLAHOMA  
CareerTech



For more  
information,  
Scan Here

Oklahoma CareerTech and the Regional University System of Oklahoma have launched the Teaching to Teach Apprenticeship Program to provide teachers with education training at a regional university and on-the-job training under a mentor at their school districts or early learning centers. Apprentices will receive a scholarship and pursue standard certification through the Assessment of Professional Knowledge exam.

## Program Information

The Teaching to Teach Apprenticeship Program is available for the 2025 – 2026 academic year. The scholarship amount is up to \$10,000/semester. The amount will vary depending on the remaining unpaid balance of tuition, books, and certification voucher exam (if applicable) costs. Program spots are on a "first-come, first-serve" basis.

## Eligibility

- Actively employed at an Oklahoma school district, technology center, or early learning center
- Participation requires employer commitment to support apprenticeship on-the-job learning and mentorship
- Pursuing alternatively certified, emergency certified, and/or standard certification
- Enrolled at an approved Regional University System of Oklahoma (RUSO) university in an education/teacher preparation degree or certification program.



## Contact

**Joe Cox**  
Apprenticeship Specialist  
(580) 430-1234  
joe.cox@careertech.ok.gov

## How to Apply

[apprenticeships@careertech.ok.gov](mailto:apprenticeships@careertech.ok.gov) by:  
Tuesday, August 5th

We are always willing to assist,  
although:

95%

of questions can be answered if  
you check:

The  
Newsletter

Our  
Websites  
Oklahoma FCCLA  
ctYOU.org

Your  
Email



# 25-26 OATFCS OFFICERS

- President: Mary Dushane
- Pres.-Elect: Amanda Faulkenberry
- Past President: Rita Hartwick
- Secretary: Kelly Brock
- Treasurer: Mary Beth Carver
- Treasurer-Elect: Emily Colvin
- N-VP: Lisa Favalora
- NE-VP: Brenna Humphrey
- S-VP: Tina Clawson
- SE-VP: Richard Boone
- Occ. VP: Bobbie Back
- Div. Advisor: Holly Hanan

# GET INVOLVED WITH OATFCS

## OATFCS MEMBERSHIP

Will need OATFCS members to work on committees and legislative networks to improve FCS programs in Oklahoma.

## TIME COMMITMENT

The time commitment of serving with OATFCS is about 1–3 meetings a year.

## CORRESPONDENCE

Typically correspondence occurs via mail, email, or fax.

**WILL NEED VOLUNTEERS FROM EACH REGION**

## Join a FCS Division Committee Today!

Hello Family and Consumer Science Members,

We're looking for enthusiastic, dedicated members to serve on one of three key committees that are vital to the growth and direction of our division:

**Membership Committee** – This group focuses on building a strong and connected Family and Consumer Sciences (FCS) community. You'll help develop strategies to recruit new members, engage current ones, and highlight the value of being involved in ACTE. If you love connecting with people and celebrating our profession, this is the spot for you!

**Sponsorship Committee** – Passionate about partnerships? This committee works to build relationships with businesses, organizations, and stakeholders who support FCS. Members help secure sponsorships for events, programs, and special projects that benefit our division.

**Strategic Planning Committee** – This team takes a big-picture view of where the division is headed. You'll help review and update our long-range goals, evaluate progress, and ensure we stay aligned with the needs of educators and the future of FCS. It's perfect for those who love planning, visioning, and meaningful impact.

Each committee offers a unique way to get involved and help move our profession forward. If you're interested or would like to learn more, please contact me, Karin Davis, at [VP\\_FCS@iamcte.com](mailto:VP_FCS@iamcte.com).

We'd love to have your voice at the table!

# THANK YOU FOR SERVING

## Membership Committee

- Work to increase membership in OATFACS
- maintains a communication network

## Public Information Committee

- Recognize teachers and programs making outstanding contributions to FCS
- promote curriculum showcase

## Scholarship Committee

- review applications of scholarships
- determine scholarship recipients

## Nominating/Awards Committee

- Recruit applicants for the scholarship program.
- Assist with hosting awards ceremony.


# LEGISLATIVE NETWORK VOLUNTEER FORM



# OATFCS INVOLVEMENT FORM



10A TFCS YEARS  
OF MEMBERSHIP  
AWARDS!



**1 YEAR OF  
MEMBERSHIP**

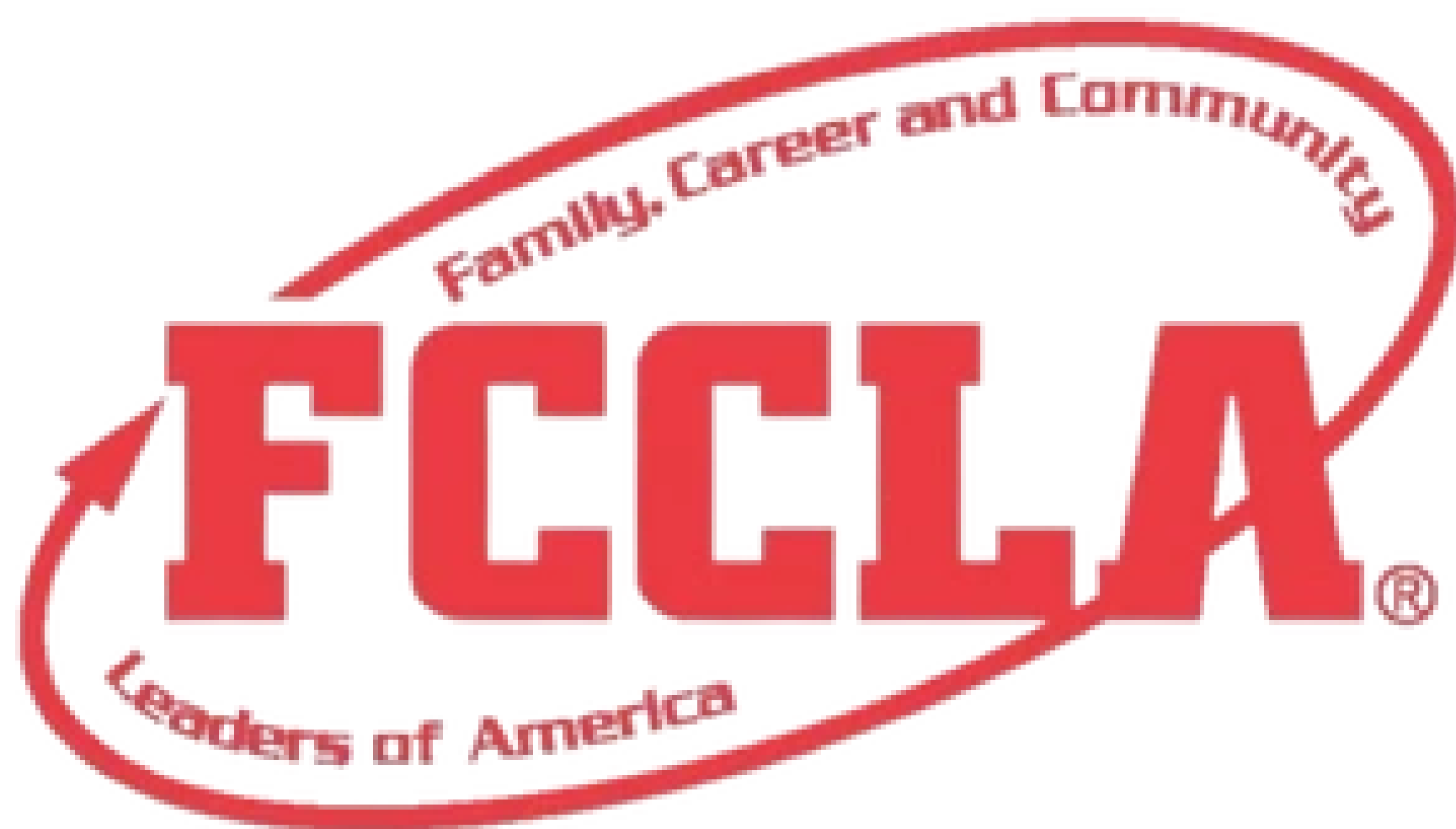


5 YEARS

OF MEMBERSHIP



10 YEARS  
OF MEMBERSHIP



OKLAHOMA  
STATE ASSOCIATION

# 2025-2026 SEC

## **President**

Kendall Stout, Stigler HS

## **First Vice President**

Kooper Walker, Kingston HS

## **Vice President of Community Service**

Amina Washington, Oklahoma Union HS

## **Post Secondary Officer**

Aleighnna Rodriguez, Great Plains Tech Center

## **National VP of Community Service**

Tennyson Elrod-Spears, Wright City HS

## **Vice President of Membership**

Maddie Mueller, Colbert HS

## **Vice President of Programs**

Gracelyn Vails, Stigler HS

## **Vice President of Public Relations**

Tyce Myers, Edmond North HS

## **Vice President of Competitive Events**

Audree Elder, Putnam City North HS

## **Vice President of Marketing**

Adrianna Allen, Sallisaw HS

# 2025-2026 SEC UPDATES

25-26 SEC MEMBERSHIP  
CHALLENGE:

“SPARK –  
Paint it  
Red”

25-26 SERVICE  
PROJECT:

25-26 NATIONAL  
PROGRAM:

Student  
Body



**2025**  
**LEAD CONFERENCE**  
Leaders: Assemble

<b>SEPT 18</b> <b>NORTH REGION</b> Stride Bank Center 301 S Independence St Enid, OK 73701	<b>SEPT 17</b> <b>NORTHEAST REGION</b> Glenpool Conf. Center 12205 S Yukon Ave. Glenpool, OK 74033
<b>SEPT 10</b> <b>SOUTH REGION</b> Simmons Center 800 Chisholm Trail Pkwy Duncan, OK 73533	<b>SEPT 11</b> <b>SOUTHEAST REGION</b> Life Church 1300 S George Nigh Expy McAlester, OK 74501

**FCCLA**  
OKLAHOMA  
STATE ASSOCIATION

**\$15**  
**PER STUDENT**

More Info [Oklahomafccla.org](http://Oklahomafccla.org)



**LEAD  
REGISTRATION  
DEADLINE:  
AUGUST 28TH  
DON'T WAIT!  
REGISTER NOW!**

**STATE  
CONVENTION:  
THEME TBD  
TULSA, OK  
APRIL 2, 2026**



**NATIONAL  
LEADERSHIP  
CONFERENCE:  
WASHINGTON, DC  
JULY 6-10, 2026**

# NLC CHAPTERS RECOGNITION – TOP 10 PLACEMENT

Canadian Valley Tech ECE PM FCCLA

Cherokee High School FCCLA (9)

Crescent High School FCCLA

Edmond Central Middle School FCCLA (2)

Edmond Memorial HS FCCLA

Edmond North High School FCCLA

Francis Tuttle Tech FCCLA

Medford High School FCCLA (2)

Meridian Tech FCCLA

Metro Tech FCCLA

Perkins-Tryon JH FCCLA

Pioneer Tech FCCLA

Seiling FCCLA (2)

Timberlake FCCLA

Woodward High School FCCLA

# FCCLA NATIONAL HEADQUARTERS ADDRESS:

**NATIONAL FCCLA**

13241 Woodland Park Road,

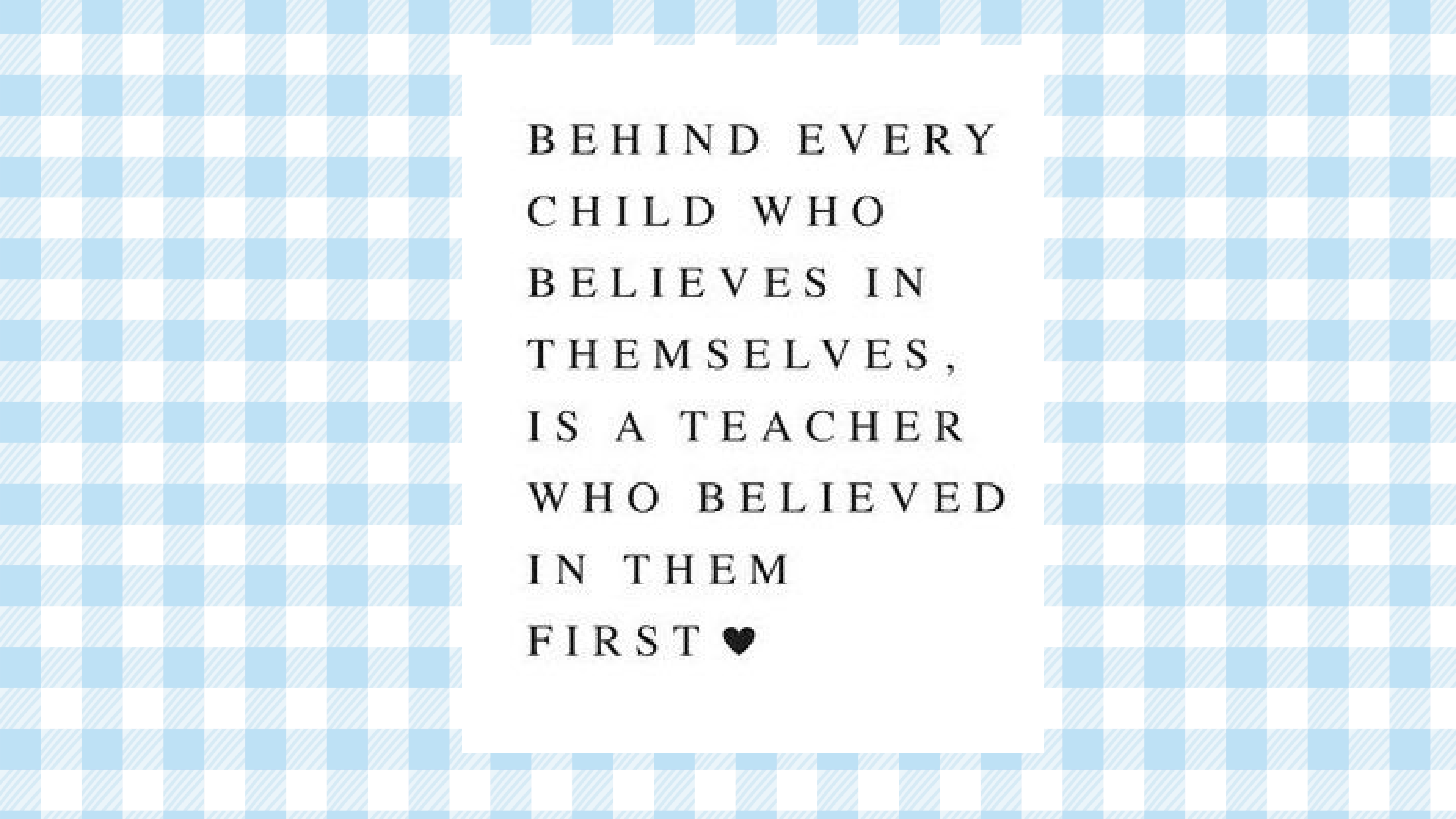
Suite 100

Herndon, VA 20171

\*\*\* Address is needed for reasons such as Affiliation Payments

~PSA~

PLEASE SEND ME AN EMAIL WITH  
URGENT QUESTIONS... IF YOU ASK ME IN  
PERSON TODAY, IT MIGHT NOT MAKE  
IT BACK TO THE OFFICE.



BEHIND EVERY  
CHILD WHO  
BELIEVES IN  
THEMSELVES,  
IS A TEACHER  
WHO BELIEVED  
IN THEM  
FIRST ♡

**PLEASE MOVE INTO YOUR  
DISTRICT SECTIONS FOR DISTRICT  
PLANNING MEETINGS**

**FCS Mandatory**

**FCCLA Mandatory**

**Advisers of N5 and all District Counselors**

## North Region Dates 2025-2026

Events	District #1	District #2	District #3	District #4	District #5
<b>Oklahoma Summit</b>	Monday/Tuesday, August 4-5, 2025 Tulsa Convention Center				
<b>Fall PI Meeting</b> <b>LEAD Conference</b>	Thursday, Sept 18 <sup>th</sup> , 2025 - Enid Stride Bank Center				
<b>Lead Deadline</b>	August 28 <sup>th</sup> , 2025				
<b>District Leadership Conference</b> <b>Registration 9:00</b> <b>Meeting 9:30</b>	Monday October 6, 2025 Fairview, OK	Thursday October 2 <sup>nd</sup> , 2025 Enid HS	Thursday October 23 <sup>rd</sup> , 2025 Yukon MS	Tuesday September 30 <sup>th</sup> , 2025 Stillwater PAC	Wednesday October 22 <sup>nd</sup> , 2025 Bristow HS Auditorium
<b>Take AIM</b>	Tuesday, October 7 <sup>th</sup> 2025 Meridian South Campus, Guthrie, OK				
<b>District STAR Events</b> <b>Reg 9:00</b> <b>Orient 9:30</b>	Thursday November 6, 2025 Major County Fairgrounds @ Fairview	Wednesday November 19, 2025 Enid High School	Wednesday November 12 <sup>th</sup> , 2025 Yukon HS	Wednesday November 5 <sup>th</sup> , 2025 Meridian South Campus Guthrie, OK	Thursday November 13 <sup>th</sup> , 2025 Stroud HS
<b>District Registration Deadline</b>	Tuesday, October 21 <sup>st</sup> , 2025				
<b>Region STAR Events</b> <b>Reg 9:00</b> <b>Orient 9:30</b>	<div>Hosting Region #5</div> <div>Tuesday, February 3<sup>rd</sup>, 2026 Stroud High School</div>				
<b>Region Registration Deadline</b>	January 10, 2026				
<b>FCS Day at the Capitol</b>	Thursday, February 19 <sup>th</sup> , 2026				
<b>State STAR Events</b>	Wednesday/Thursday March 25 <sup>th</sup> & 26 <sup>th</sup> , 2026 Stillwater, Expo Center				
<b>FCCLA State Convention</b>	Thursday, April 2 <sup>nd</sup> , 2026 Tulsa, OK				
<b>District Officer Interviews Virtual</b>	Tuesday, April 28 <sup>th</sup> , 2026				
<b>Spring PI Meeting</b> <b>4:30-6:30</b>	Wednesday April 15 <sup>th</sup> , 2026 High Plains Tech 9:30 am	Tuesday May 5 <sup>th</sup> , 2026 Crescent HS 4:30 pm	Thursday April 30 <sup>th</sup> , 2026 Edmond Santa Fe HS 4:30	Wednesday May 6 <sup>th</sup> , 2026 Guthrie MS 4:30	Monday May 4 <sup>th</sup> , 2026 Chandler HS 4:30

# DISTRICT DUTY SHEETS

---